

APPENDIX C: SNOW/ICE REMOVAL RESOURCES

FACILITIES MAINTENANCE EQUIPMENT

(2) Tractors with Front End Loader and Box Blade

(1) Unit used to load sand and salt mix

(1) Unit used to remove plowed snow in parking lots
Streets and parking lots

(2) Dump Truck, Single Axle with Snowplow Blade and Salt Spreader
Clear streets, lots and intersections

(1) Dump Truck, Single Axle
Haul snow when needed.

(8) Mower Mounted Snowplows
Clearing sidewalks

(5) Mower Mounted Snow Brooms
Clearing sidewalks

(2) Backhoe
Used to clear intersections and remove plowed snow in lots and streets.

(2) Skid-Steer Loader with Blade
Used on sidewalks and building entrances.

(2) Pickups with Snow Blades
Used to clear parking lots

(1) Pickup Mounted Spreader
Sidewalks and tight area in parking lots

(2) Utility Vehicle with Spreader
Sidewalk chemical application

(Many) Various Hand Snow Shovels and Equipment

Equipment Rentals

(2) Skid-Steer Loader with Blade (as needed depending on conditions)
Used on sidewalks and building entrances

(1) Motor Grader
Clear Streets, parking lots, and intersections

(1) Wheel Loader
Loading, clear sidewalks

Labor

Labor will vary and be diverted from other functions within Facilities Management to assist with snow-removal or other weather-related efforts.

Certain maintenance and custodial tasks may be deferred if resources are required to focus on snow/ice-removal.

- **Grounds/Landscape Services Department**

Focus on sidewalks, stairs, building entrances, crosswalks, and intersections utilizing mower and pickup mounted snowplows, tractors, skid-steer snowplow, and hand tools.

- **Shop Support / Heavy Equipment Department**

Streets and intersections, parking lots and sidewalks utilizing; Dump trucks, motor graders, back hoes, skid-steer snowplow, pickup snowplows, and tractors.

- **Utility Services Department**

Streets, parking lots and sidewalks utilizing; Dump trucks, motor graders, back hoes, skid-steer snowplow, pickup snowplows, and tractors.

- **ABM Custodial Services Contractor**

Building entrances, ADA ramps, and stairs utilizing; Shovels, brooms, mops, and hand broadcasting ice melt.

- **Skilled Trades Departments**

Parking lots and sidewalks utilizing; Pickup mounted plows, skid-steer plow, tractors, and dump trucks. Electric Department to move Math Generator Set to site should weather predictions warrant.

Note: ABM Custodial Service

ABM Custodial Services within buildings will be curtailed, as ABM staff will be utilized to assist in clearing building entrances, sidewalks, stairs and ramps. Normal duties when resumed will focus on common areas.

Plan Preparedness Levels

Levels of action that will occur as local media weather sources forecast chances in (%'s) for snow/ice as follows:

Level One -Local weather media predict a 50% chance of snow/ice on the 7-10 day forecast.

- A general review of: this document set, labor, equipment and material is performed.
- Vendors are contacted for equipment delivery, purchase orders are written, approved and ready to issue.
- Material stockpiles are inventoried and prepared.

Level Two -Local weather media forecast a 30% chance of snow/ice on the 5-day forecast.

- Labor is identified and equipment is readied.
- Purchase orders are processed to vendors for equipment deliveries.

Level Three -Local weather media forecast a 30% chance of snow/ice in the next 24hours.

- Labor is assembled to review the plan, assignments are handed out and time-lines established.
- Vendor provided rental equipment is delivered.
- Facilities Management equipment is assembled; plows, spreaders, weights, fuel and tire chains.
- Phone message recordings with report to work times identified.
- Contact OSUPD, PIO, and the City of Stillwater.

APPENDIX D: U.S. WEATHER SERVICE DEFINITIONS

WATCH:

A forecast issued well in advance of a severe weather event to alert the public of the possibility of a particular hazard, such as tornadoes, severe thunderstorms, flash floods, winter storms, or heavy snows.

WARNING:

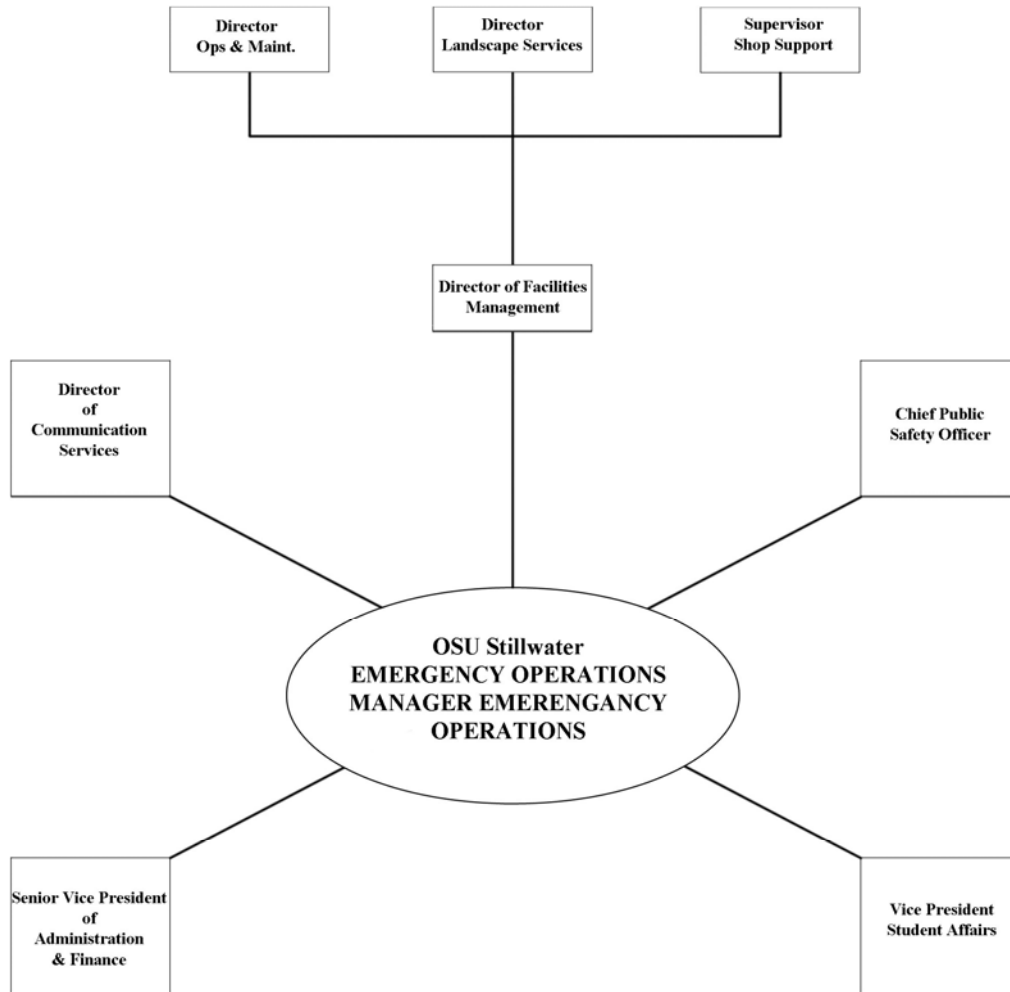
A forecast issued when severe weather has developed, is already occurring and reported, or is detected on radar. Warnings state a particular hazard or imminent danger, such as tornadoes, severe thunderstorms, flash floods, winter storms, heavy snows, etc.

BLIZZARD WARNING:

Following conditions 3 hours or longer include wind, sustained or frequent gusts to 35 mph or greater. Snow falling or blowing frequently reducing visibility to less than ¼ mile.

When temperatures are below 20 degrees F. emphasizing life-threatening nature of cold conditions.

APPENDIX E: NOTIFICATION SEQUENCE FLOW CHART AND TELEPHONE LIST



APPENDIX F: LABOR RESOURCES BY DEPARTMENT

Plan Execution

Landscape Services Department Manager

Bret Proctor & (65) Zone Staff

Zone 1, Zone 2, Zone 3

Z1 Leader (5) Staff	Z2 Leader (4) Staff	Z3 Leader (3) Staff
------------------------	------------------------	------------------------

Zone 4, Zone 5, Zone 6

Z4 Leader (2) Staff	Z5 Leader (2) Staff	Z6 Leader (1) Staff
------------------------	------------------------	------------------------

Zone 7, Zone 8, Zone 9

Z7 Leader (2) Staff	Z8 Leader (2) Staff	Z9 Leader (0) Staff
------------------------	------------------------	------------------------

Zone 10, & Horticulture Services

Z10 Leader (1) Staff	Landscape Services Assistant Manager (7) Staff
-------------------------	---

Irrigation Services Weed & Pest Control STAFF = F.T.P.

Leader (1) Staff	Leader (0) Staff
---------------------	---------------------

ALL OTHER SUPPORTING FACILITIES MANAGEMENT DEPARTMENTS

Class 1 Storm: 0 supporting departments

Class 2 Storm: Minimum of 15 people from supporting departments up to ALL “available” personnel including Managers and Directors.

Class 3 Storm: N/A, 0 supporting departments (All removal efforts have stopped until conditions improve)

APPENDIX G: EQUIPMENT AND MATERIAL VENDORS

Equipment Vendors

Warren Cat
15 North Meridian Avenue
Oklahoma City, OK 73107-6501
Phone: (405) 947-6771

Yellow House Machinery
1300 West Chestnut Ave.
Enid, OK 73073
Phone: (580) 233-5000
Toll Free: (800) 522-0385 (24-hour notice)

Kinnunen Inc. Sales & Rentals
707 East 6th Ave.
Stillwater, OK 74074
Phone: (405) 743-4400

Hertz Rental
123 South Perkins Rd.
Stillwater, OK 74074
Phone: (405) 372-7666

United Rental
3520 North Perkins Rd.
Stillwater, OK 74075
Phone: (405) 372-1591

Labor Vendors

Kerns Construction
1805 South Perkins Rd.
Stillwater, OK 74074
Phone: (405) 372-2750

The C.L. Boyd Co. Inc.
4220 West Reno, Box 26427
OCK, OK 73126
Contact: Howard House (405) 945-8540

Material Vendors

Sand

Stillwater Sand and Gravel Company
4623 S Perkins Rd.
Stillwater, OK 74074
Phone: (405) 372-4050

Dolese Bros. Company
415 E. 6th Ave.
Stillwater, OK 74074
Phone: (405) 372-5921

Kerns Construction Company
1805 South Perkins Rd.
Stillwater, OK 74074
Phone: (405) 372-2750

Salt

Stillwater Milling Company
512 East 6th Ave.
Stillwater, OK 74074
Phone: (405) 372-3445

Cimarron Valley Coop.
Perkins, OK
Phone: (405) 547-2423

Ice Melt

Facilities Management Supply Warehouse

Biotech Products (Snow Plow Ice Melt)
1529 West Main St.
OKC, OK 73106-3013
Phone: (800) 234-9795

Estes Chemical Company
1819 N.W. 5th
OKC, OK 73106
Phone: (405) 235-7575

Grimsley's
119 East Airport Rd.
Stillwater, OK 74075
Phone (405) 533-5300

Backup

Lowe's of Stillwater
1616 North Perkins Rd.
Stillwater, OK 74075
Phone: (405) 377-3000

Agrium Advanced Technologies
5201 West Reno Suite E.
OKC, OK 73127
Phone: (405) 598-3582