

MISSION

We serve OSU faculty, staff, students, and community by creating and maintaining an inspiring campus environment to support essential research, education, and outreach.

By doing this, we help OSU achieve prominence as an outstanding institution of higher education and drive our organization's financial and resource model through sustainable and cost-effective growth.

OSU Facilities Management Newsletter

AUTUMN ISSUE 2016



Ron Tarbutton

Director, Interim Chief Facilities Officer

The past several months have flown by as Facilities Management employees have been very busy taking care of the OSU campus. A lot of our work goes on behind the scenes without notice such as preventive maintenance and minor repairs. Some work gets more notice if it is not done and infrastructure work requiring utility disruptions, road or parking lot closures is noticed by everyone. However, in all cases we are working to improve the campus while minimizing the negative impacts to the campus. We are proud of the difference our employees are making to improve the campus from daily maintenance tasks such as preventive maintenance, painting, cleaning, lawn care, roofing, etc. to projects like the new Labyrinth and OSU Welcome Plaza. I am proud of all the Facilities Management employees who work hard every day and are making a significant difference as we support the mission of OSU by creating and maintaining an inspiring campus environment.

OSU's Pet Therapy Program Visits FM

The **Pete's Pet Posse**, OSU's Pet Therapy Program, was established as a wellness program in fall 2013. The program has experienced much success and has recently expanded to include OSU-Tulsa and the OSU Center for Health Sciences in Fall 2015.

The dogs provide an additional wellness benefit to faculty, staff, students and even visitors. These animals belong to families of employees and other affiliated with OSU. They are not owned by the university. They live with their humans full time and make the campus a little brighter orange each time their furry feet hit the campus. See additional information regarding this program on the OSU Pet Therapy Program website.

Recently **Ms. Lorinda Schrammel** attended the Maintenance and Operations Thursday meeting and spoke about the program and its many benefits. She brought along her dog Evie who is a member of the OSU Pet Therapy Program. Thank you Lorinda and Evie for sharing with FM!



Facilities Management (FM) Reacts to Earthquakes

The OSU campus experienced a record setting 5.8 magnitude earthquake near Pawnee that shook the campus on Saturday morning, Sept. 3rd, at approximately 7:02am. Even though it was Labor Day weekend, the FM Staff arrived on campus and started inspecting the campus buildings for structural damages within 15 minutes. By the end of the day all major campus building exteriors had been inspected and the damages were reported. The next day, FM and Long Range Facilities Planning staff worked together to take a more detailed look at the facilities with areas of concern. On Labor Day structural engineering consultants were brought in to assist FM to investigate several buildings to ensure they were structurally safe for occupancy. Fortunately, all of our campus buildings were deemed safe for occupancy by the consultants. Although we fared fairly well considering the magnitude of the earthquake, we have many areas needing repairs. We are currently working through the list to repair the most significant damages caused by the earthquake and then we will work to complete the cosmetic repairs. Unfortunately Stillwater was once again rocked by a 5.0 magnitude earthquake on Nov. 6th around 7:44pm near the city of Cushing. But thankfully for OSU this large earthquake did no significant damage.

VPR Suite Renovation

I just wanted to offer my personal thanks and commendation on a job well done, now that we are fully back into the VPR suite in Whitehurst. The remodeling job was not only carried out in a professional and timely manner, but the attention to detail and craftsmanship has resulted in a suite of offices that we can all be very proud of.

Thank you so much for taking such good care of our space (and of us!) throughout this project.



Kenneth W. Sewell, Ph.D.

Vice President for Research
Oklahoma State University
405-744-7076

kenneth.sewell@okstate.edu

<http://www.vpr.okstate.edu/>



Achieving Excellence

The VPR renovation is an example of how FM Employees come together to work collaboratively to achieve Excellence!

Total number of workers: 66 Total number of shops: 12

In-house Construction: Richard Evans, Zelford Smith, Paul Dupree, Dustin Jones, Errick Anderson, Monty Mayes, Billy Cooke, Darren Evans, Kevin Mitchell, Ryan Loy, Michael Farrall, Reanna Melton, Curtis Cooper

FSS-Moves: Terry Lane, Daniel Alexander, Jacob Southwick, Danny Webb, Jeff Foster, Robert Redmond, William Clark, Jacob Shay, Charles Lewis, Kenmon Workman, Jarod White, Kevin Black, Victor Gonzalez, Will Eaton, Cameron Richarson

CT-Upholstery/furniture: Bobby Edwards, Steven Vincent, Marc Hughes, Benjamin Van Ness, John Dow, Tyler Toland, Pranav Kulkarni, James Karsten, Zachary Sale

Asbestos: James Axtell, John Hartsfield, Gregg Johnson, Ivan Budd, James Byram, Luis Martinez Santi

FSS-Keys: James Whitmore, Bruce Brandon

MEP-Life Safety: Christopher Netherton, Nathan Moore, Jr. James Spybuck, Daniel Knott, Christopher Haynes

MEP-BSG: Michael Bowyer

MEP-Mechanical/HVAC: Steven Arnett, Nicholas Hop, Kenneth Allen

MEP-Electrical/Plumbing: Michael Voss

MEP-Evenings Operations: Justin Pinson, Steven Cluck, Christopher Asad, Spencer Jones, Martin Battles, Doug Hargis

FSS-Signs: Eric Nelson, Davis Saunders

Zone 2: Mark Glaze, Jeffrey Jardot, James Moon Jr.

AIM CPPM Training with Long Range Facilities Planning

Jenelle Feddersen, FM Bus Ops Manager, is pictured below working with LRFP employees to maximize the AIM CPPM functionality. LRFP utilizes AIM for the management of their projects much like FM uses AIM for management of maintenance work orders.



The AIM Committee

Jenelle Feddersen chairs the AIM Committee that meets bi-weekly and is made up of FM employees and LRFP employees. Topics discussed relate to the AIM system functionality, system upgrades, potential improvements/issues and budgetary needs. AIM is core to the way FM conducts business today and this meeting ensures cross-functional collaboration into the continued success of AIM long term for FM.



Thank You!

We want to *thank* the FM 2017 United Way Team for all their hard work!

Pictured left to right:
Kristena Smith, Sarah Norvelle, Geena Brownell, Kathy Stoops
(FM United Way Captain)



Retirement

Thank You to Tony Perna and Dave Ford for their service to OSU and FM Landscape Services.

Tony retired after 20 years of service and Dave after 28 years of service!



FM Quarterly Building and Deans Representatives Meeting

Each quarter, **Ron Tarbutton** and Zone Management host the **Dean's Facilities Representatives** meeting to discuss the services provided by FM Maintenance & Operations to the University Campus.

Mr. Joseph B. Weaver, Jr., Sr. Vice President of Administration and Finance addressed the group and answered questions. Ron invited guest speakers **Ilda Hersey** and **Chad Tucker** who presented the **OSU Recycling and Sustainability Program** to the group.



Circle at the Animal Science Building

I wanted to thank Facilities for the renovation of the circle at the Animal Science building. It is once again a great space for students to enjoy and another successful Dean's Top Ten list projects!

Thanks again,

Janna Williams

Facilities & Project Manager

Division of Agricultural Science and Natural Resources



Thanks to each of you for the role you played in renovating the Animal Science "Circle"! As you can see in the pictures sent out by Janna, the new circle is beautiful. Our students have commented that the new circle looks so much better than when they left for the summer. We appreciate all you did to make this project a reality.

**Clint Rusk, Head
Department of Animal Science**

Thank You for Making This a Success:

Bobby Edwards, Steve Vincent, Marc Hughes, Carlos Delgado-Ortiz

FM CT-Structural Trades

Animal Science

Pictured are FM workers from the CT-Structural Trades group: **Dan Warner, Clayton Reusser and James Seals.**

Maintenance painting on the north stairwell in Animal Science. The Dean's Representatives meet with FM quarterly and determine a priority list of maintenance projects for their buildings. The work being performed in the picture is one such project from the Dean's List.



The Roofing Team at Facilities

Left to right: **Sheldon Hagler, Mike French, Thomas (Rusty) Harris and Bruce Jackson**

Their main focus is roof maintenance and repairs across campus. The FM roofing group is also very good at "investigative work", as their jobs also require a great deal of skill and experience in determining the root cause of a water leak since water can enter from many ways other than the roof.



"These guys do a tremendous job keeping up with all the roofing work on campus" stated CJ Moore, CT Structural Trades Zone Manager

Flooring Work in Brumley Family Housing



James Byram and Luis Martinez Santi, working in the Brumely Family Housing to renovate the flooring.

Procurement Services

Below: Student worker **Kymesha White** performs the daily cycle count activity in the Supply Warehouse. Cycle counting is an important method to ensure accurate inventory records.



Above: **Roger Bowers**, motor vehicle operator in procurement services is instructing student worker **Daniel Reed** how to use the iPad device to schedule, log and complete emergency related pick-ups for the trades.

University Mailing Services Workshop

University Mailing Services conducted a workshop for campus customers which included the following topics:

- What UMS does
- New work order and invoicing programs
- Designing mailers to save money
- Preferred methods of shipping for maximum savings

The workshop was held Oct 17th at the Student Union Case Study 2 room.

UMS representatives at the workshop were: **Jana Snow, Jessica O'Daniel, Jess Mutschelknaus, Tarin Forrest and Barbara Dobson.**



Barbara Dobson and
Jess Mutschelknaus

Procurement Services

Tiffany Munday is holding an informal meeting with the Procurement Services Team regarding how the accounts payable function for POs associated with Work Orders tied to contracts will be handled in the future.

Pictured are: (left to right) **Sarah Norvelle, Trena Withey, Marlene Tornakian, Tiffany Munday, Lindsey Dugan, Heather Forquer and Reagan Miller.**

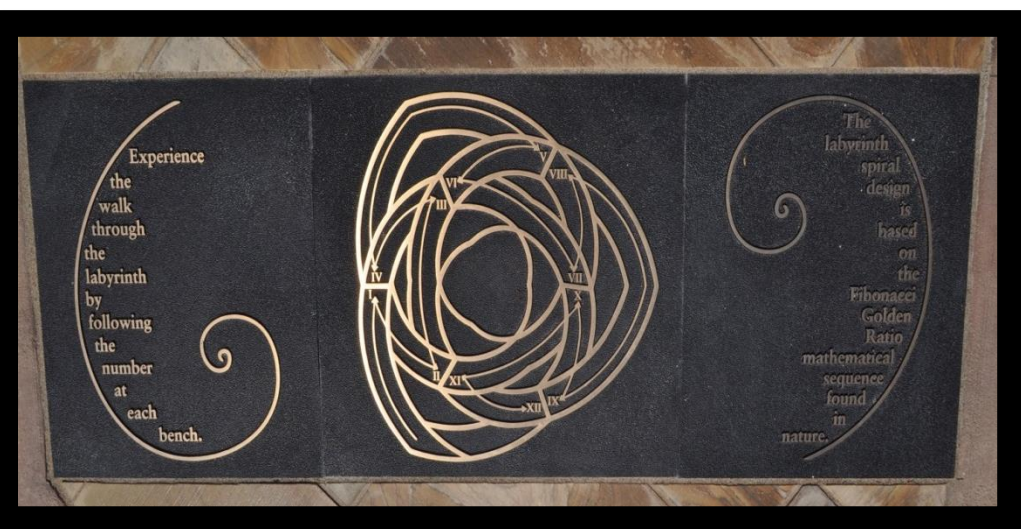


Grand Opening of the OSU Labyrinths

FM Landscape Services created two walking labyrinths for people to use to meditate and study. While one labyrinth provides a peaceful place on campus grounds located between Morrill Hall and Bartlett Center, the other provides an opportunity to enjoy the beauty in the Botanic Garden at **OSU**.

Unlike a maze that is meant to confuse the participant, a labyrinth is typically defined as a path with one entry and one exit point. **David Brown, OSU Landscape Design Supervisor**, designed the labyrinth on campus to create a peaceful, yet practical space for students to unwind.

“We wanted to provide a space that is restful for people”, said Mr. Brown. **“Where people can stop, take a breath and use the labyrinth as a walking meditation to relieve stress.”**

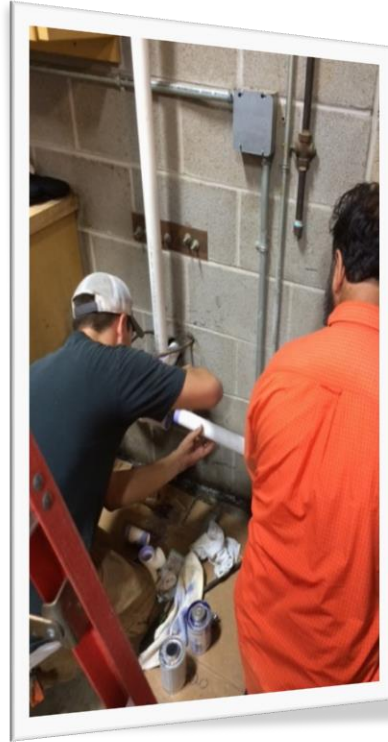


This design was chosen because it blends the two worlds of landscape design campus beautification and the wellness initiative here at OSU. It was also chosen because it has 3 sides, the three sides represent mind, body and soul and how those pieces of our health are interconnected.



Lactation Room Located in Facilities

OSU supports mothers in the workplace by providing lactation rooms on campus. Section 4207 of the Federal Fair Labor Standards Act, which requires that employers provide “a place, other than a bathroom, that is shielded from view and free from intrusion from coworkers and the public.”



Pictured are:
Paul Jones and
John Gleason
working on the
plumbing
installation for a
sink to be added
to the room.

I want to commend Facilities Management for adding a lactation room to the FM Services Bldg. Sixteen years ago when I worked in the Noble Research Center, my only options were using the ADA access stall in the restroom or a photography dark room in the middle of a research area. I basically had to choose between surrounding myself, and essentially my baby's food, with toilet bacteria or harsh photo chemicals. For Facilities Management to see and understand a need of its employees and their families truly makes a statement about what the department views as its most important assets - its people. I want to extend a great and sincere thank you to all who were involved in preparing the new lactation room. You did a good think and you deserve to know what a difference you have made.

Thank You
Casey Keyser, CEM, CMVP
Sr. Energy Manager, Facilities Management

On behalf of myself and all the future mothers who will use the lactation room. I am so grateful to work with such talented, thoughtful people.

Thank You very much
Brooke Richardson
Sr. Administrative Support Assistant
Landscape Services, Facilities Management

We Honor Our Veterans



Pictured: left to right:

Front row: Jack Zamskie, Art Whitney, Tom Budd, Keith Shields, Bruce Jackson, Luis Martinez

Middle row: Donald Graham, Derek Heston, Rod Wheeler, Wade Blackburn, Chris Krieger, John Tiger

Back row: Carlos Ortiz (and daughter), Jason Bartlett, Pete Barnes, Jarrett Stokes, David Moody, Ron Tarbutton, Larry Curtis, Jarrett Talbot

FM Employee Training and Development

Kirk Van Overbeke and Chad Tucker completed the **APPA Supervisors Toolkit** training in July. It was held at Texas Christian University.

The Supervisors Toolkit is a program designed and developed by APPA for the purpose of training and developing supervisors and managers in the facilities environment.



Greg Leeming, Assistant Supervisor Zone 2 receives the **OSU Leadership Development Program Certificate** from **Steve Ledbetter**, Zone 2 Manager.

The Leadership Development Program is designed to provide knowledge and to develop skills in achieving results from our most important resource, "people power." The program consists of 50 hours of training divided into both required and elective seminar presentations. Successful completion of the program illustrates a desire for continuous learning and improvement and a commitment to the University.



Jim Lemon, Zone 4 Supervisor joined **Leon McClinton**, Director of Housing and Residential Life and **Shannon Baughman**, Associate Director in attending the Big 12 Directors and Housing Operations 2016 Conference hosted at Baylor University Oct. 10-12.

**Directors and
Housing Operations**
2016 Conference
Hosted by Baylor University



APPA: Educational Facilities Certifications



Ron Tarbutton, Director, Interim Chief Facilities Officer, presents APPA certificates to Jeff Sweeden and John Gleason.

Jeff received the *APPA Certified Educational Facilities Professional (CEFP) certification*. The CEFP credential represents the highest standards of performance and understanding in educational facilities management. The CEFP is the only facilities credential that focuses on professional development, while encompassing the full, multi-disciplinary range of educational facilities management principles and practices – from planning, design and construction to daily operations and general management.

John received the *APPA Educational Facilities Professional (EFP) certification*. The EFP demonstrates professional knowledge and competency for the effective and efficient management of educational facilities.

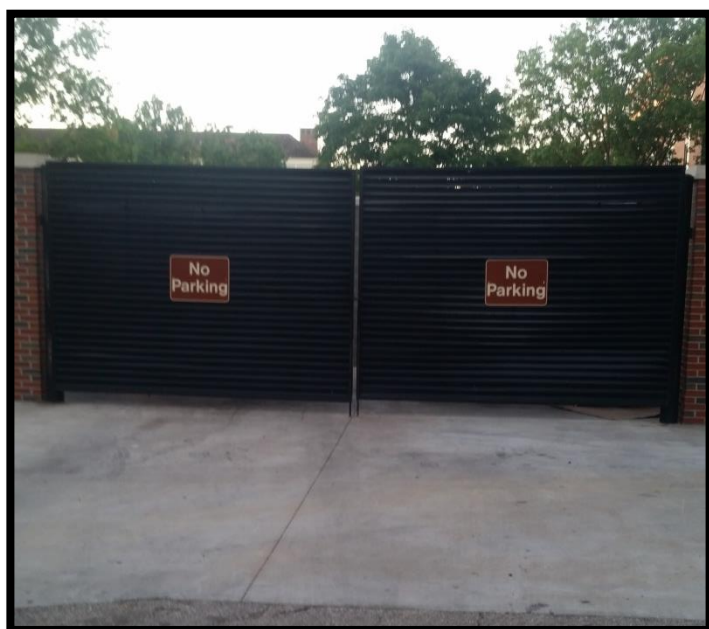
FM and OSU Parking & Transportation Services Work Together to Create a Solution

The key hole parking lot between LSE/LSW has been a chronic issue for the Refuse truck to empty the trash and recycle dumpster for quite a while. If a vehicle was parked in any of the spaces the refuse truck would be unable to reach the trash or recycle dumpster. It was decided between FM and Parking Services to move the FM Parking spaces to Athletic Avenue and metered parking to another location on campus. When the work order came through for Central Trades to paint the FM parking spaces CJ Moore asked if we could put four parking spaces instead of just the two. It was decided to put four parking spaces. These spaces are easier and safer to get in and out of for employees and students. I would like to **thank Parking Services, Central Trades for the painting, Shop Support Services for removing the parking signs, and the Sign Shop for the "NO PARKING" signs on the dumpster enclosure gates.** **You all showed what working as a team can accomplish in a short period of time.**

Thank you all,

Joanna Price

Senior Quality Control Associate
OSU Facilities Management



CCS Holds “Your Opinion Matters” Meeting with Customers

Gabriel (Gabe) Dreiling, Director Construction & Contract Services, along with Rose Butler, Joanna Price, Kim Trunk and Genet Mekonnen held a presentation of custodial services with customers across campus. Topics of the meeting were: the GCA contract, contract performance measures used by FM, understanding the APPA custodial service standards, contract limitations, quality inspections, GCA staffing levels and the new FM Custodial Survey that began November 1. Following the presentation was a question and answer period. The meeting was attended by over 40 customers and great discussion followed that gave the CCS Team many ideas and perspectives from the campus customers for continuous improvements. As stated by Gabe, **“We owe it to you to understand your concerns.”**



Your Opinion Matters Photos

Left: Bruce Williamson and Jim Hargrave signing attendance sheet.

Below: Jacque Lochmiller and Adrian Self



Left: Ron Tarbutton and Elizabeth Cyr

Right: Rose Butler and Jason Sullivan



Left: Gabe Dreiling, Joanna Price, Kim Trunk.

Right: Genet Mekonanen



Custodial Services Receive Praise from Customers

Carol Ray Dear received high praise from Residential Life:

"Just wanted to let you know the GCA employee that has recently been reassigned to Brumley is amazing. Her cleaning is mind blowing. Literally, the old sink in the kitchen is sparkling! Just wanted to share some positive feedback and let you know I appreciate her hard work. It has not gone unnoticed! Thank you for all that you do!"

Marcy Louis
Ast Dir Res Life



GCA staff at ATRC received message of thanks for their work in the ATRC building:

*"I would like to thank GCA housekeeping staff at the ATRC building for their help with recent requests in a timely manner. Our crew of **Terence, Brenda, Lynn, and Sheila** has been doing a fantastic job with our building. They also have been very helpful with stewardship of ATRC, by alerting me to areas that need attention. With their reporting, and effective communication on a daily basis, along with their housekeeping duties, the ATRC students, staff, and faculty have a building we are very proud of. Thank you again to our ATRC GCA housekeeping crew!"*

Gerry Battles, Jr
CEAT Support Services

Pictured left to right: **Brenda Westfall, Sheila Radford, Lynn Strotter and Terence Hancock**

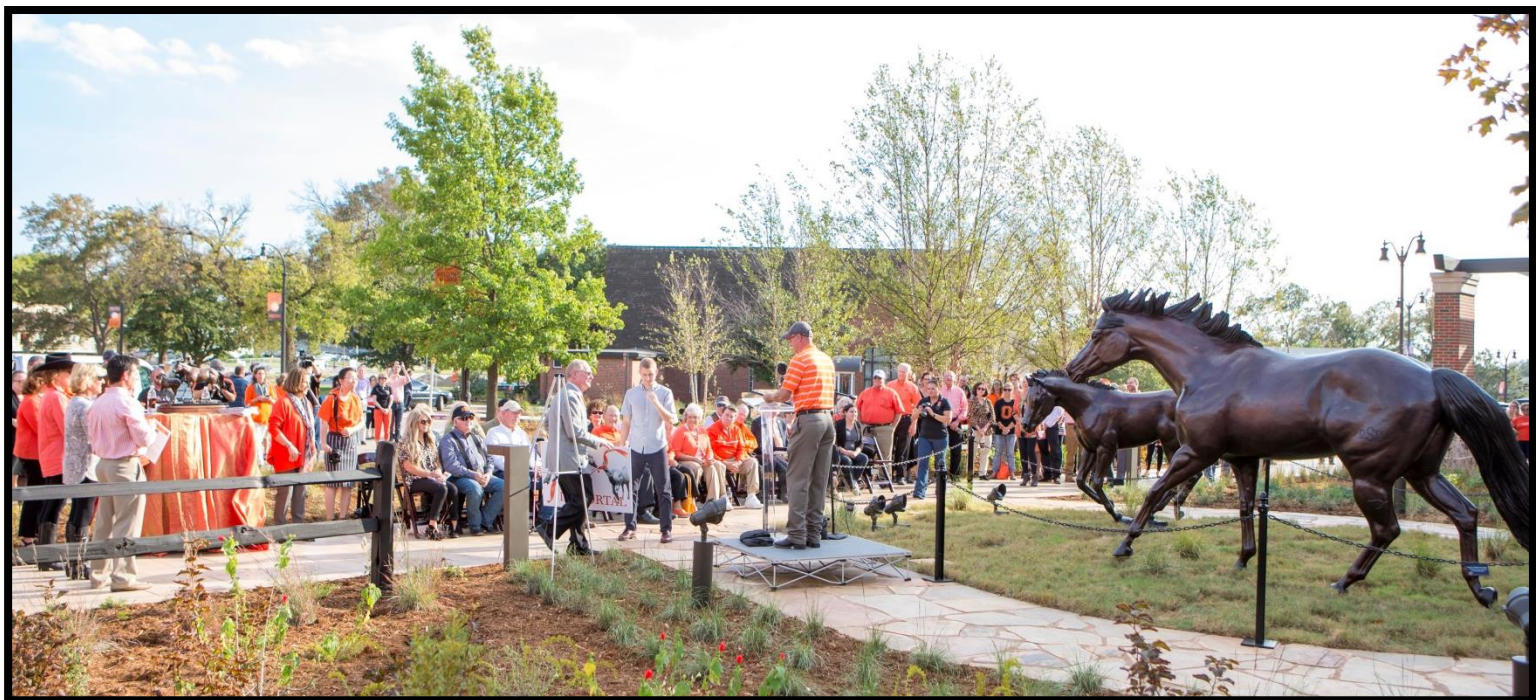


OSU Welcome Plaza

The new **OSU Welcome Plaza** was dedicated on October 28, 2016. The design concept, created by FM Landscape Designer, **Dave Brown**, will be an inviting garden area, landscaped to provide shade and an outdoor living space. At its center are impressive statues, the work of artist **Marrita Black**, of a galloping mare and her foal, created 1.25-times larger than reality and cast in bronze. The mare is intended to represent alumni, staff and faculty keeping a watchful eye while the foal is meant to represent the eager freshmen ready to run out and change the world. A bronze sculpture of a saddle sitting atop a fence is also featured as an artistic reminder of the John Wayne quote "*Courage is being scared to death, but saddling up anyway.*" Arbor columns are inscribed with Cowboy ethics and the alma mater. The collaborative project has been several years in the making. Securing private funds has been a part of the project from the beginning with several donors having helped make the Welcome Plaza a reality.

Special Thanks To:

Landscape Services Design, Installation, Maintenance and Shop Support, Sign Shop, Business Operations, Supply and Receiving, Construction and Contract Services, and Utilities for their support and hard work in helping make the Plaza a reality!



The Cowboy Spirit



Micah McDade, Landscape Services, is presented a Cowboy Basketball jersey from *OSU Coach Underwood* in appreciation for his support of OSU Athletics! **Micah is the OSU Sports #1 Fan**. Way to go **Coach Underwood** and **Micah!**

Twenty Third Annual "Help Our Own" Food Drive

Twenty-three years ago, in response to an appeal put in the suggestion box; we began an annual Food Drive. The purpose is to provide a nice holiday meal to families and individuals within the Facilities Management who otherwise, might have to do without.

The Food Drive will begin Monday, November 28, 2016, and will conclude December 20, 2016.

Please contact **John Byram**, (744-8594), 115Q FM Admim. Building for more information.



Henry Bellmon Sustainability Award

The **OSU** Energy Management Program recognized as the 2016 Henry Bellmon Sustainable Economic award winner.

*“On a daily basis, people throughout **OSU** take small steps to save energy, and these actions add up to a big impact on how much energy the University consumes,”* said **Tammy Johnson, FM Energy Manager**. See addition information on the Energy Management Program at energy.okstate.edu

Congratulations to the **FM Energy Services Sustainability Group!**



Central Plant “Topping Out” Ceremony

The new **OSU** Central Plant under construction held a “topping out” ceremony on September 16 where the beam pictured on the left was placed onto the structure as seen in the picture below. Many FM employees attended the event and placed their names on the beam!



Textile Recycling Begins!

We now have textile recycling in FM. An orange, metal recycle bin has been placed in the FM Parking Lot #71 near the Upholstery Shop. The box can be used by anyone, however, it accepts used clothing, shoes, linens; torn or stained fabric is also accepted.

New Textile Recycling Bin!

Located in FM Parking Lot #71

- It's for used textiles from the Upholstery Shop as well as public use
- It accepts used clothing, shoes, linens, a lone sock or shoe, denim, towels, and torn or stained fabric
- ATRS personnel will empty the bin regularly
- A percentage of the recycling profit is shared MADD
- Problems? Call the hotline listed on the bin or email: sustainability@okstate.edu

ATRS American Textile Recycling Service
Neighborhood Donation Bins

MADD

OSU GOING GREEN

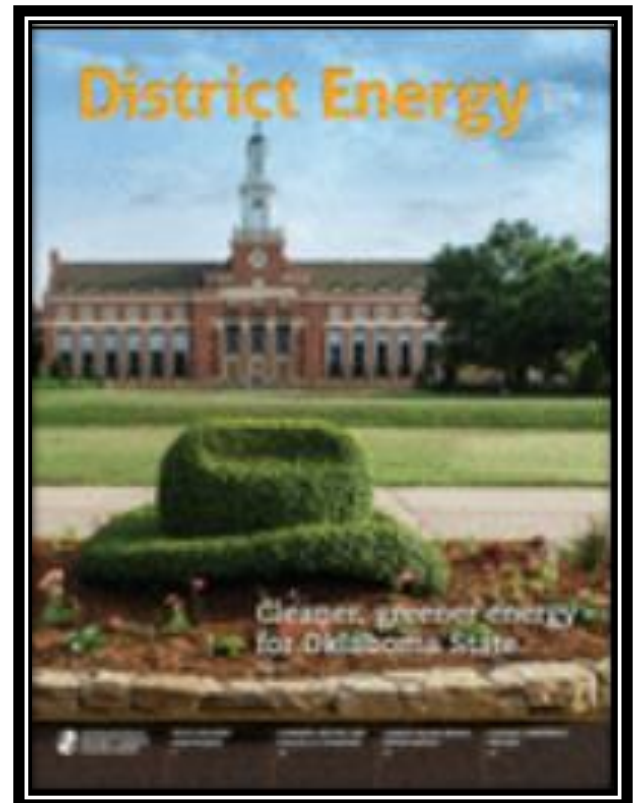
Recycling Center
Clothing & Shoes

OSU New Central Plant Featured in District Energy Magazine

The new OSU Central Plant was the “cover story” in the fourth quarter issue of District Energy Magazine. The article is titled “Oklahoma State University moves toward greater sustainability.” It is a great honor to be the featured story!

Please click on the link to read the article.

N:\Group\ADMIN\FM-NEWSLETTER\FY17 Newsletters\FY16_FM-Newsletter\IDEA-PUBLISHED-Article.pdf



FM Bids Fond Farewell to James Rosner



We want to thank **James Rosner**, Director Energy Services for the contributions he has made to Facilities Management over his 4 year career!

James accepted the position of Associate Vice Chancellor for Facilities and Management at the University of Denver effective Nov. 1st. We will sincerely miss James and are grateful for the many contributions he has made to make Facilities Management the great place it is!



FM Announcements



Renee Smith was recently promoted to the position of *Director, FM Business Operations*.

Renee is a 6 year Facilities Management employee. As Director of Business Operations, Renee will bring leadership to the FM Accounting, Payroll, IT, Procurement Services, and University Mailing functions. Previous to joining FM, Renee was the owner/president of Tradeaegis, LLC an import/export consulting firm and a 24 year employee of Mercury Marine.



Gabriel (Gabe) Dreiling was recently promoted to the position of *Director, Construction and Contract Services*.

Gabe moved to Stillwater from Athens, Alabama in April 2015 after accepting the position of Construction Project Manager on the CCS team. He has a professional background in facility management, radiology management, IT information assurance, and medicine and medical device sales. As Director of Construction and Contract Services, he supports the CCS team and guides the mission and goals of the Contracts, Project Management and In-House Construction programs. Gabe and his wife Miranda have five young children. Gabe is engaged in church life at Stillwater Bible and can be found doing activities with family on evenings and weekends.



Charles "Dusty" Stoabs joined Facilities Management on October 24 replacing James Rosner as the *Energy Services Director*. Dusty graduated from OSU in 1995 with his mechanical engineering degree and now returns to OSU with a strong background in engineering. Dusty is very familiar with our new Central Plant and the Utility Master Plan. Dusty was responsible for the full campus chilled water load study and hydraulic model, full campus steam study and thermodynamic model, and for sizing and writing the project scope for the new 16,000 ton chilled water/280,000 lb.hr steam central plant. He managed the design team through publication of the draft Utility Master Plan. Dusty also managed the A-E design team through the schematic design of the new Central Plant. We are very happy to have Dusty Stoabs working with us at OSU Facilities Management.



Steve Tanner was selected as **Special Projects Manager** reporting to Ron Tarbutton. In this new role, Steve is responsible for supporting the Zone Managers by completing assigned special projects. Additionally, Steve will provide support to Construction and Contract Services, Energy Services and Long Range Facility Planning. He will gather information, diagnose and troubleshoot significant MEP problems with both existing and new systems. Steve will work on numerous special projects ranging from facilities and pavement condition assessments, capital renewal and deferred maintenance planning and execution, building acceptance and start up issues, design reviews, retro-commissioning, fume hood systems, roads and parking lots, and many more complex and very technical projects. Steve will also write/update O&M Standard Operating Procedures. Steve will enlist the help of Facilities Management units as needed to jointly solve and correct issues and of course, other duties as assigned.



Craig Spencer was recently promoted to **Utilities Engineering Manager, Energy Services**.

Craig is from Stillwater and studied Biosystems and Agricultural Engineering at **Oklahoma State University**. He worked with the Natural Resources Conservation Service for 5 years before becoming a Utility Engineer in the **OSU** Energy Services department in April of 2015. Craig enjoys motorsports and is an avid outdoorsman. He and his family are active members of Life Church.

Please Welcome our Newest Team Members to Facilities Management!



Aubrey Wilson, Construction Manager, Construction & Contract Services.

Aubrey is an OSU graduate with a bachelor's degree in Construction Management Technology. For the past four and a half years, she has been working in the oil and gas industry as an estimator and project manager. Aubrey enjoys spending time with family and friends in her spare time.



Dan Ledgerwood, Building Maintenance Mechanic, Zone 1.

Dan enjoys fishing/outdoors and attending his kids sporting events.



Curtis Bateson, Plumber, Zone 1.

Curtis enjoys fishing, hunting and outdoor activities. He also enjoys attending his kids sporting events.



Jason Bartlett, Stock Clerk, Supply Warehouse.

Jason is an OSU Graduate and a Sargent in the Oklahoma National Guard.



Rick Crawford, Sign maker, FSS Signs

We want to welcome back Rick to the sign shop after a few years of absence. Rick is happy to be back and enjoys the daily workings of the sign shop. Rick had worked here for 15 years and was able to fit right back in to his creative job. Rick is responsible for name badges, room Id's and all engraving along with vinyl work and is a valuable member to the sign shop team!



Bob Neal, Exterminator, FSS Pest Control.

Bob brings over 25 years of pest control experience to FM. In his free time, Bob enjoys his 7 salt water fish tanks and numerous fish.



Brandon Coe, Electrician, Zone 2.

Brandon is a recent graduate of Meridian Technology as a Commercial Electrician's Assistant. Brandon was on the team that won the State Champion 2016 Skills and Team Works Competition.

Brandon is an avid hunter, Chapter President in Stillwater for Whitetails Unlimited, a nonprofit organization. He is also a horse trainer and owner.



Lee Niewinski, Groundskeeper, Installation Services.

Lee is from Rolla Missouri and attended the Missouri University of Science and Technology. Lee enjoys his bee keeping hobby and has many honey producing hives in Rolla, Mo.



John Maddox, Heavy Equipment Operator, Landscape Shop Support Services.

John joined Facilities in September after moving here from El Reno. John enjoys hunting, fishing and spending time with his family.



Jeff Foster, Material Mover, FSS Moves/Special Events.

Previous to joining Facilities, Jeff was a manager for a local moving company. Jeff was born and raised in Oklahoma and enjoys spending time his family.



Tyler Francies, Maint Mech, Zone 3.

Tyler has worked at OSU since 2012 starting out as a temp in the summer moving his way up to his current position. He states he really enjoys working at OSU!



Tanner Williams, Maintenance Assistant, Zone 3.

Tanner is from the small panhandle town of Turpin, he loves the outdoors and he states he has really enjoyed his time at OSU!



Kerstien McMurl, Water Plant Operator, Utilities Production.

Kerstien was recently married to his best friend, Aimee, who also works for OSU. Kerstien states he really enjoys the atmosphere as an operator at the water treatment plant working with a great bunch of people. He is also learning quite a lot about the processes to treat water!



Tony Acker, Carpenter, In-House Construction.

Over his career, Tony has obtained extensive residential, commercial and reclaimed construction experience. He also enjoys riding his motorcycle and playing golf in his spare time. Tony states he is looking forward to a long career at Facilities Management.



Cyndi Reece, Sr. Financial Assistant, Procurement Services.

Cyndi moved from California to Oklahoma in 2006. She enjoys spending time with her family, camping and baking.



Deanna Siegfried, Administrative Assistant, Business Operations.

Deanna just recently moved to Stillwater in September to be near her family. She enjoys the Stillwater community and loves to travel and play scrabble.



Customer Satisfaction is Important to FM

Mr. Tarbutton,

The end of June I put in a request to have the air vents in our offices on the 4th floor of Scott Hall to be cleaned. John McMillan and David Adams came by my office and explained what they would be doing over the weekend of June 25 and 26. We were having black residue coming out of our vents. Mr. McMillan and Mr. Adams explained that they would vacuum and remove all the old insulation in the vents, put in new insulation, and filters. Mr. McMillan had a crew of 6 working throughout the weekend and everything was done for work on Monday. They made sure desks were protected during the cleaning and sweep the floors of each office.

Mr. McMillan and crew were very professional and the staff was pleased with the results. Mr. McMillan and Mr. Adams came by to make sure everything was satisfactory. They are both courteous and professional.

Thank you,
Sharon Hunt



Oklahoma State University
Division of Institutional Diversity

Sharon Hunt
Administrative Assistant
Diversity Academic Support/TRiO Programs

From: Russell, Bruce

Sent: Tuesday, September 13, 2016 12:14 PM

To: Causley, Fred <fred.causley@okstate.edu>

Cc: Roberts, Yvonne <yvonne.roberts@okstate.edu>; Delatte, Norb <norb.delatte@okstate.edu>

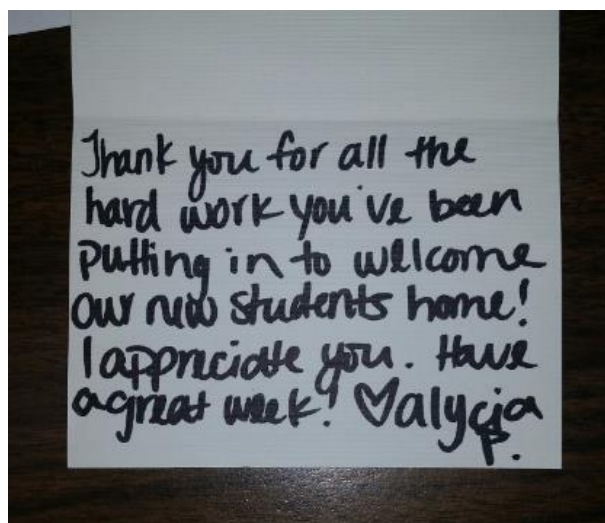
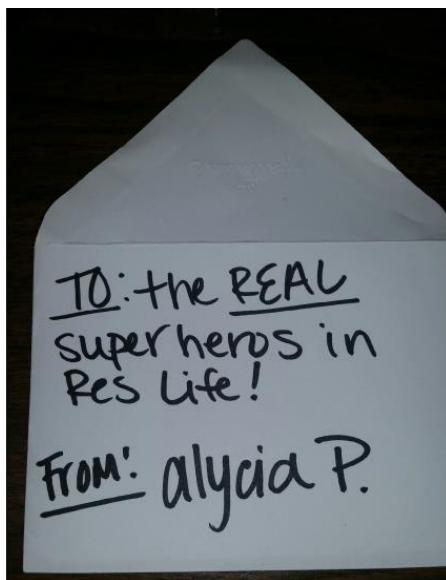
Subject: Landscape Maintenance

Dear Fred,

I know that you are the supervisor of Facilities Management for the zone of campus where the Cooper Lab resides. We have spoken on the phone in the past and more recently we spoke in person the Saturday of the 5.8 Pawnee Earthquake while you were performing a walkthrough of the Cooper Lab.

I wanted to send you an email to memorialize our conversation regarding Mr. Kevin Lane who is the FM employee principally responsible for landscape maintenance of the Cooper Lab and other properties in our area. Kevin, and whatever collection of temporary employees he has at his disposal, has been terrific in his diligence in keeping the exterior landscaping at the Cooper Lab looking great. Recently I called him one morning to ask him if he could get some weeks pulled ASAP as we were having some unannounced guests coming that afternoon. I know he was busy working on other areas, but he came to the Cooper Lab that morning and performed another fantastic job of getting our front landscaping looking great once again. I can't tell you how much difference it makes in the first impression to visitors to our Building. We want to convey a sense of excellence and of expertise to our visitors, our alumni and our various research sponsors. And I know that most of the work that employees like Kevin do is largely unappreciated. So I wanted you to know what a terrific job that Mr. Kevin Lane is doing for us at the Cooper lab. He makes Facilities Management look good and more importantly he makes all of us at OSU look good. Thanks,

Bruce W. Russell, Ph.D., P.E., F. ACI
Director, Bert Cooper Engineering Laboratory
Associate Professor
School of Civil and Environmental Engineering
Oklahoma State University



Note of Thanks to **David Adams** and the Zone 3 Team from Residential Life!

Below are comments written by the customer on work order survey 17-0216425 to thank FM MEP Life Safety for their assistance.

Y'all saved my life. I dropped my car and room keys down the elevator shaft and it would have literally been hundreds of dollars to replace them. I called at about 9am and I had them back in my hands by about noon. I got called twice about it, just letting me know what was going on and who would be fixing my mistake. I can't say enough great things about you. Thank you, thank you, and thank you!!

I would like to say a **BIG THANK YOU** to **Brian Sanders, Doug Lockett, Aaron Moore and Dan Ledgerwood** for retrieving my keys that I dropped in the drain hole yesterday.

I was really touched by your true spirit to help me and the fact that despite a failed attempt yesterday, you made it a point to come back today and give it another try.

You don't see this kind of commitment and dedication often, and I sincerely appreciate your efforts.

I don't have enough words to express.

Again....

THANK YOU...BRIAN, DOUG, AARON AND DAN!!!

You guys are the best!

Divya

Divya Jaroni, Ph.D

Asst. Professor

112 FAPC

Oklahoma State University

On Sept. 3, 2016 just after 7am we experienced a 5.8 magnitude earthquake. That day just happened to be a Saturday and also the first home football game of the season. The earthquake was large enough to trigger our emergency earthquake procedure and our plan went into action. I quickly started calling individuals from each Zone to come in and start visual inspections to ensure our campus was safe for Faculty, Staff, Students and Guests. I was very impressed with the willingness and quick responses given by our O&M staff members. Within thirty minutes we had boots on the ground and within a couple of hours we were able to give an initial report on the state of the campus. I wanted to say Thank You to the following staff members I directly talked with and to all others that responded in our time of need.

Zone 1 –Fred Causley and Aaron Moore

Zone 2 – Steve Ledbetter and Greg Leeming

Zone 3 – David Adams, Robert Sumpter, Terry Peterson, and Cord Harris

Zone 4 – Scott Hunsucker, Jack Ribble, and Ron Dunbar

Thanks to all involved,

Jeff Sweeden

Manager Facilities Support Services

Facilities Management

Seretean Lobby Lighting Project

Below are customer comments from **Andrew Kimbrough, Prof/Head Theatre** to **Kenny Davis, FM Construction and Contract Services**.

Subject: RE: Seretean Lobby Lighting

Hi Kenny and thanks.

I love the work. The switches are easy to operate and remove all guesswork; the timer satisfies the need for energy conservation and limited control of the lights. Your team worked incredibly fast and the bid was more than reasonable. We are very impressed and very grateful.

Andrew

Hope you have enjoyed reading the FM Newsletter, if you have ideas or comments, please send to: marla.boles@okstate.edu

An electronic copy of the FM Newsletter is located on the front page of the FM Website at fm.okstate.edu.

Thank You!