



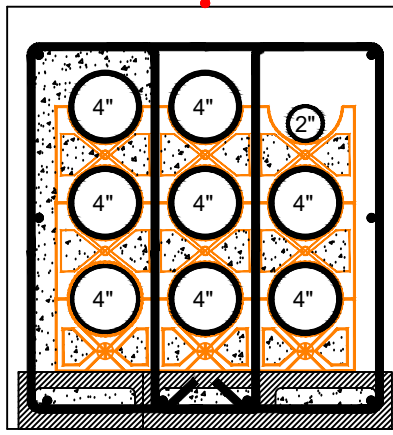
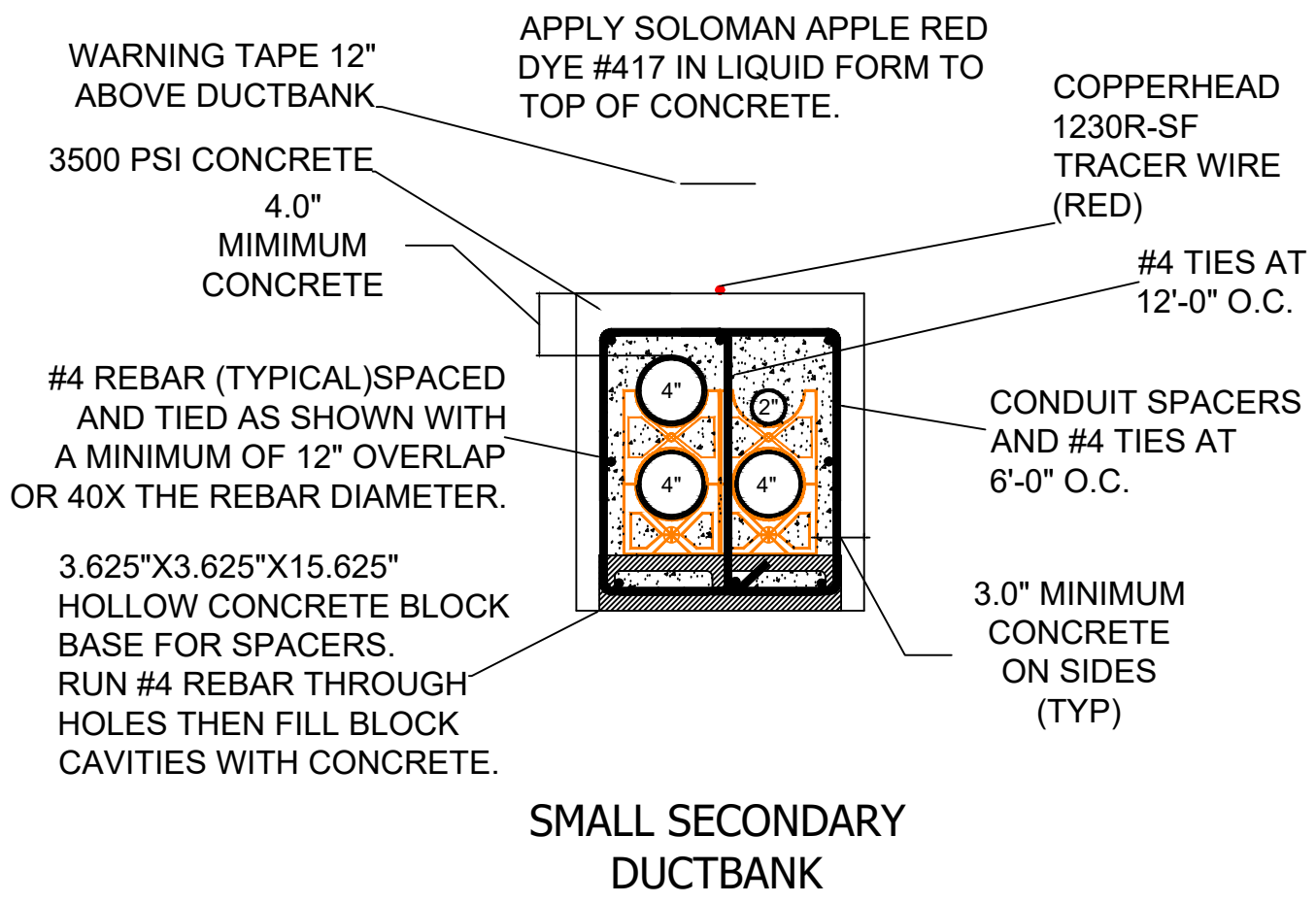
OK STATE UNIVERSITY  
ELECTRICAL  
DISTRIBUTION  
STANDARDS

| DATE | ISSUE |
|------|-------|
|      |       |
|      |       |
|      |       |

DRAWN BY: TDA  
CHECKED BY: CS  
APPROVED BY: NA  
DATE: 6/18/2018  
PROJECT #: ALL  
SCALE: 1" = 1'

SECONDARY  
DUCT BANK  
PROFILES AND  
REQUIREMENTS

SHEET NUMBER  
**SEDB-01**



NOTE:  
ALL NOTES AND  
CALLOUTS APPLY TO  
ALL DUCTBANKS.

NOTE:  
STRAP CONDUIT TO  
SUPPORTS USING  
PLASTIC CABLE TIES.  
DO NOT USE WIRE.

THE DUCTBANK PROFILES SHOWN HERE ARE TYPICAL OF ALL DUCTBANK REQUIREMENTS WITH ADDITIONAL STEEL, CONCRETE BLOCK AND CONCRETE FOR THE LARGER DUCTBANK.

THIS DUCTBANK DESIGN IS REQUIRED FOR SERVICES GREATER THAN 10 FEET IN LENGTH FROM THE TRANSFORMER TO THE BUILDING.  
DUCTBANK UNDER THE TRANSFORMER BASE SHALL BE BEDDED IN SAND.