

# APPENDIX C

## Duct Bank Details



Last Updated 11/1/2020



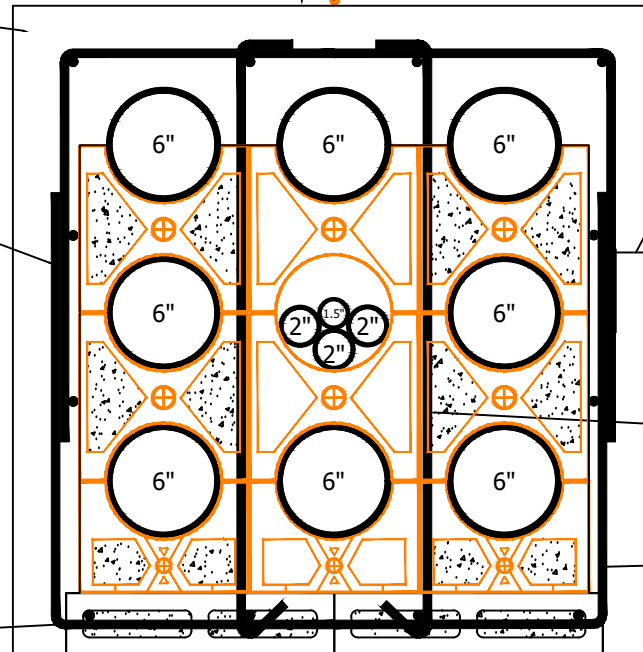
APPLY SOLOMAN APPLE RED  
DYE #417 IN LIQUID FORM TO  
TOP OF CONCRETE.  
PLACE SAFETY/CUT TAPE 12"  
ABOVE THE DUCTBANK.

COPPERHEAD  
TRACER WIRE  
(RED)

3500 PSI CONCRETE

#4 REBAR (TYPICAL) SPACED  
AND TIED AS SHOWN WITH  
A MINIMUM OF 12" OVERLAP  
OR 40X THE REBAR DIAMETER.

3.625"X3.625"X15.625"  
HOLLOW CONCRETE BLOCK  
BASE FOR SPACERS.  
RUN #4 REBAR THROUGH  
HOLES THEN FILL BLOCK  
CAVITIES WITH CONCRETE.



3"  
CLR  
TYP

#4 TIES AT  
12'-0" O.C.

CONDUIT SPACERS  
AND #4 TIES AT  
6'-0" O.C.

DESIGNED WITH CANTEX 5336040 6"  
NOMINAL WITH 3" SEPARATION. IF  
OTHER SPACERS ARE USED A SHOP  
DRAWING IS REQUIRED TO VERIFY  
DUCTBANK DIMENSIONS AND INTEGRITY.

NOTE:  
STRAP CONDUIT TO SUPPORTS  
USING PLASTIC CABLE TIES.  
DO NOT USE WIRE.  
EXTERIOR DIMENSIONS ARE  
MINIMUMS.

DATE	ISSUE
4/26/2019	REV-1

DRAWN BY: TDA  
CHECKED BY: JR  
APPROVED BY: NA  
DATE: 6/18/2018  
PROJECT #: NA  
SCALE: NTS

PRIMARY  
DUCT BANK  
PROFILE  
AND NOTES

SHEET NUMBER  
**PDB-01**



DATE	ISSUE
5/8/2019	REV-1

DRAWN BY: TDA
CHECKED BY: JR
APPROVED BY: NA
DATE: 6/18/2018
PROJECT #: NA
SCALE: 1" = 1'

SMALL PRIMARY  
DUCT BANK  
PROFILE  
AND NOTES

SHEET NUMBER

PDB-02

APPLY SOLOMAN APPLE RED  
DYE #417 IN LIQUID FORM TO  
TOP OF CONCRETE.  
PLACE SAFETY/CUT TAPE 12"  
ABOVE THE DUCTBANK.

COPPERHEAD  
TRACER WIRE  
(RED)

3500 PSI CONCRETE

3" CLR ON  
ALL SIDES

#4 REBAR (TYPICAL) SPACED  
AND TIED AS SHOWN WITH  
A MINIMUM OF 12" OVERLAP  
OR 40X THE REBAR DIAMETER.

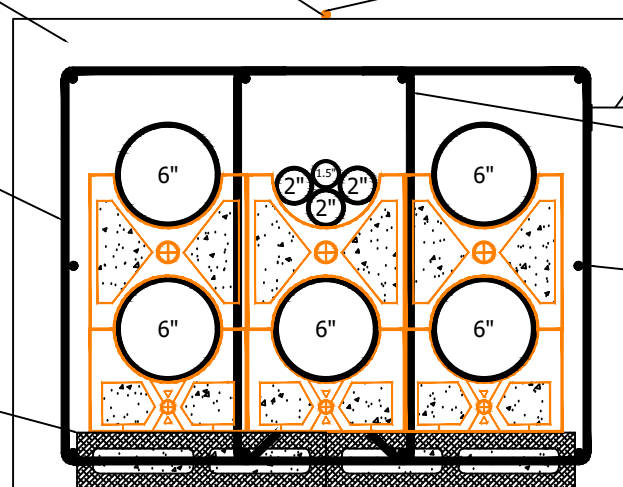
#4 TIES AT  
12'-0" O.C.

3.625"X3.625"X15.625"  
HOLLOW CONCRETE BLOCK  
BASE FOR SPACERS.  
RUN #4 REBAR THROUGH  
HOLES THEN FILL BLOCK  
CAVITIES WITH CONCRETE.

CONDUIT SPACERS  
AND #4 TIES AT  
6'-0" O.C.

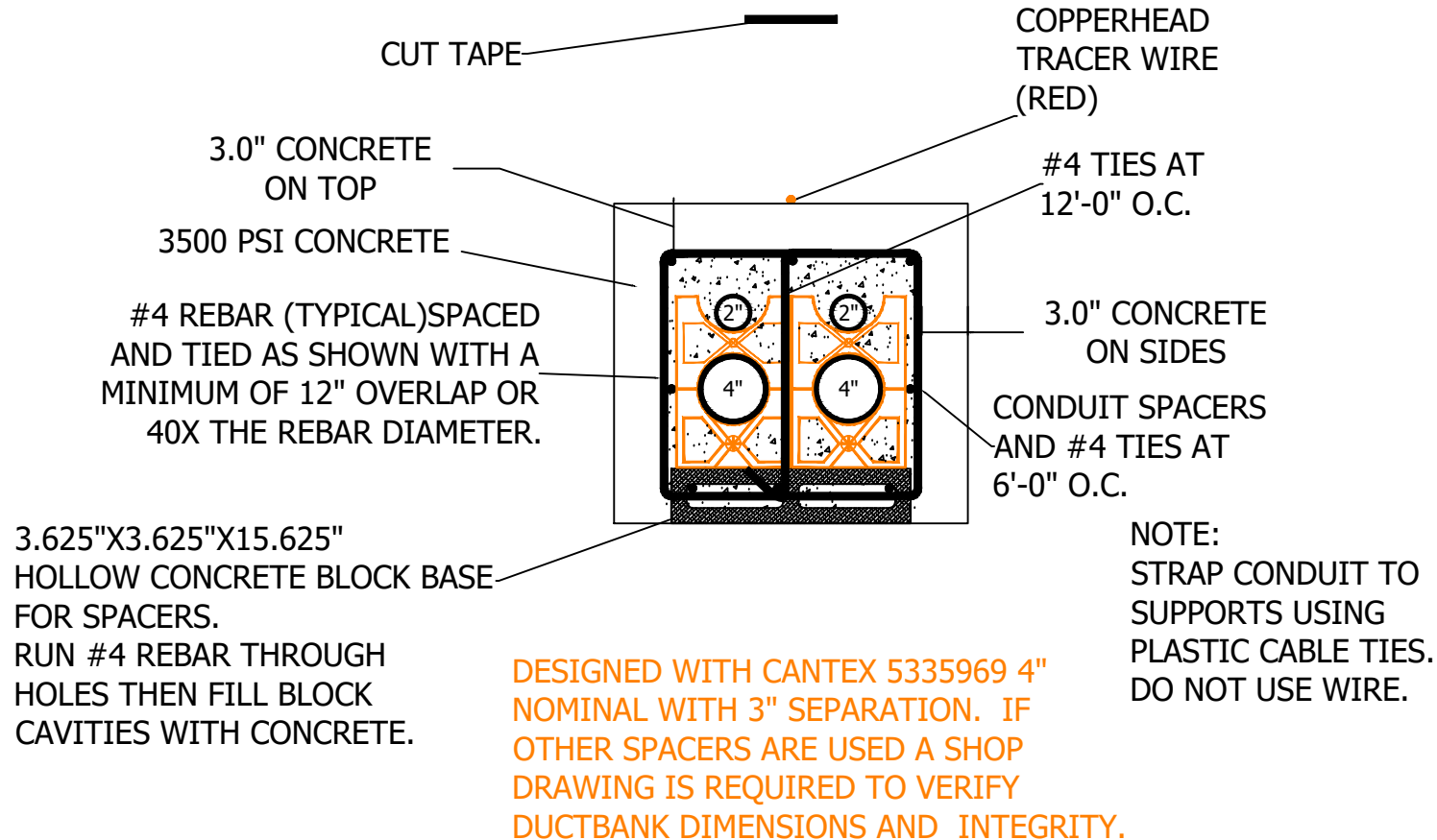
DESIGNED WITH CANTEX 5336040 6"  
NOMINAL WITH 3" SEPARATION. IF  
OTHER SPACERS ARE USED A SHOP  
DRAWING IS REQUIRED TO VERIFY  
DUCTBANK DIMENSIONS AND INTEGRITY.

NOTE:  
STRAP CONDUIT TO  
SUPPORTS USING  
PLASTIC CABLE TIES.  
DO NOT USE WIRE.





APPLY SOLOMAN APPLE RED DYE #417 IN LIQUID FORM TO TOP OF CONCRETE.  
 PLACE SAFETY/CUT TAPE 12" ABOVE THE DUCTBANK.



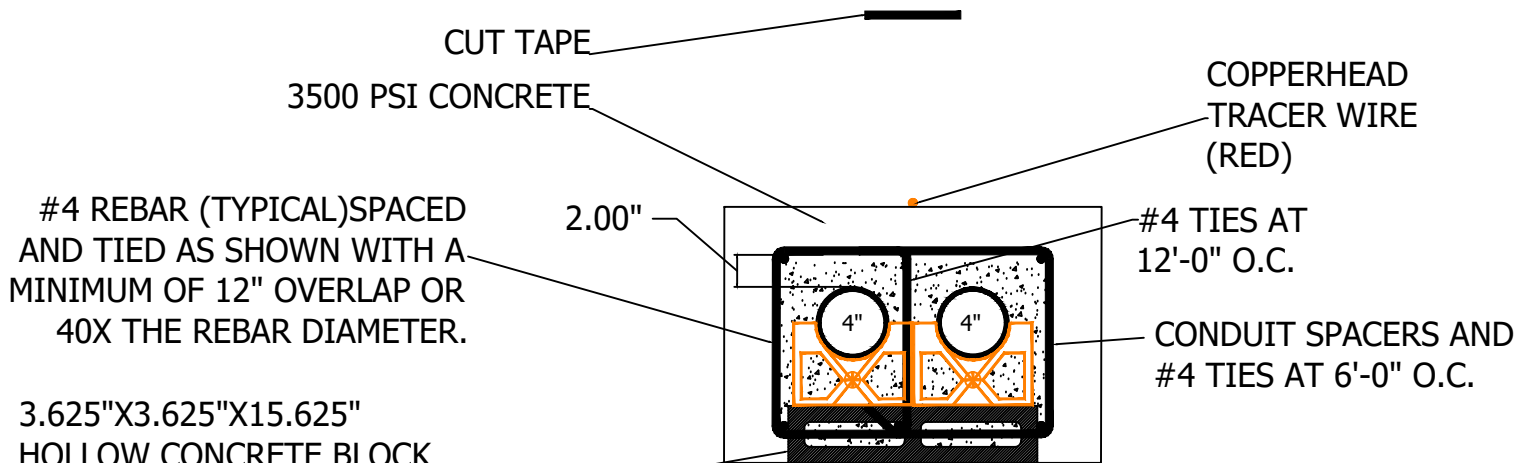
DATE	ISSUE
5/8/2019	REV-1

DRAWN BY: TDA
CHECKED BY: JR
APPROVED BY: NA
DATE: 6/18/2018
PROJECT #: NA
SCALE: 1" = 1'

PRIMARY SERVICE  
 DUCT BANK  
 PROFILE  
 AND NOTES



APPLY SOLOMAN APPLE RED DYE  
#417 IN LIQUID FORM TO TOP  
OF CONCRETE.  
PLACE SAFETY/CUT TAPE 12"  
ABOVE THE DUCTBANK.



#4 REBAR (TYPICAL) SPACED  
AND TIED AS SHOWN WITH A  
MINIMUM OF 12" OVERLAP OR  
40X THE REBAR DIAMETER.

3.625"X3.625"X15.625"  
HOLLOW CONCRETE BLOCK  
BASE FOR SPACERS.  
RUN #4 REBAR THROUGH  
HOLES THEN FILL BLOCK  
CAVITIES WITH CONCRETE.

DESIGNED WITH CANTEX 5335969 4"  
NOMINAL WITH 3" SEPARATION. IF  
OTHER SPACERS ARE USED A SHOP  
DRAWING IS REQUIRED TO VERIFY  
DUCTBANK DIMENSIONS AND  
INTEGRITY.

NOTES:  
STRAP CONDUIT TO  
SUPPORTS USING PLASTIC  
CABLE TIES. DO NOT USE  
WIRE.

ANCHOR THE DUCTBANK AS  
REQUIRED TO PREVENT  
FLOATING IN THE CONCRETE.

DATE	ISSUE
4/29/2019	REV-1

DRAWN BY: TDA
CHECKED BY: JR
APPROVED BY: NA
DATE: 6/18/2018
PROJECT #: NA
SCALE: 1" = 1'

SMALL PRIMARY  
SERVICE DUCTBANK  
PROFILE  
AND NOTES



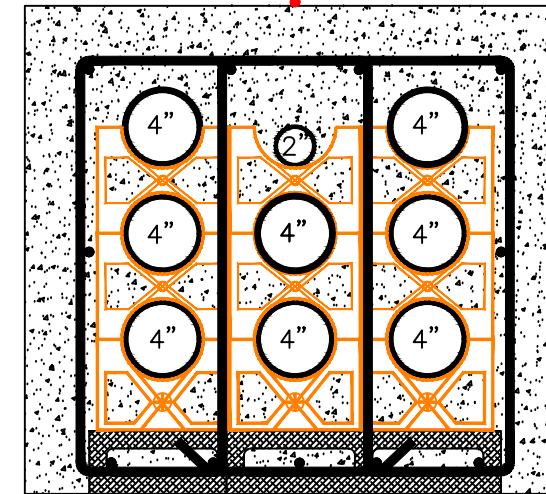
DATE	ISSUE
5/5/19	REV-1
8/14/20	REV-2

DRAWN BY: TDA
CHECKED BY: CS
APPROVED BY: NA
DATE: 6/18/2018
PROJECT #: ALL
SCALE: NTS

SECONDARY DUCT BANK PROFILES AND REQUIREMENTS

SHEET NUMBER  
 SEDB-01

NOTE:  
 ALL NOTES AND CALLOUTS APPLY TO ALL DUCTBANKS.  
 STRAP CONDUIT TO SUPPORTS USING PLASTIC CABLE TIES. DO NOT USE WIRE.

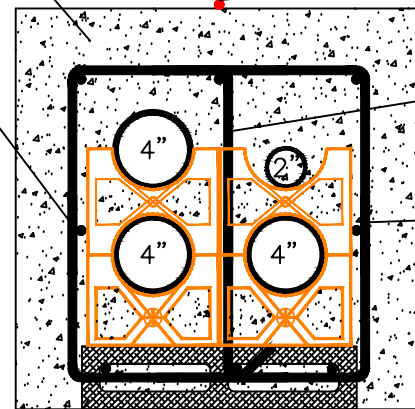


LARGE SECONDARY DUCTBANK

DESIGNED WITH CANTEX 5335969 4" NOMINAL WITH 3" SEPARATION. IF OTHER SPACERS ARE USED A SHOP DRAWING IS REQUIRED TO VERIFY DUCTBANK DIMENSIONS AND INTEGRITY.

APPLY SOLOMAN APPLE RED DYE #417 IN LIQUID FORM TO TOP OF CONCRETE.  
 COPPERHEAD 1230-HS TRACER WIRE (RED)

#4 TIES AT 12'-0" O.C.  
 CONDUIT SPACERS AND #4 TIES AT 6'-0" O.C.



SMALL SECONDARY DUCTBANK

WARNING TAPE 12" ABOVE DUCTBANK  
 3500 PSI CONCRETE  
 #4 REBAR (TYPICAL) SPACED AND TIED AS SHOWN WITH A MINIMUM OF 12" OVERLAP OR 40X THE REBAR DIAMETER.  
 3.625" X 3.625" X 15.625" HOLLOW CONCRETE BLOCK BASE FOR SPACERS.  
 RUN #4 REBAR THROUGH HOLES THEN FILL BLOCK CAVITIES WITH CONCRETE.

THE DUCTBANK PROFILES SHOWN HERE ARE TYPICAL OF ALL DUCTBANK REQUIREMENTS WITH ADDITIONAL STEEL, CONCRETE BLOCK AND CONCRETE FOR THE LARGER DUCTBANK.

THIS DUCTBANK DESIGN IS REQUIRED FOR SERVICES GREATER THAN 10 FEET IN LENGTH FROM THE TRANSFORMER TO THE BUILDING.  
 DUCTBANK UNDER THE TRANSFORMER BASE SHALL BE BEDDED IN SAND.