

# APPENDIX C

## Duct Bank Details





| DATE | ISSUE |
|------|-------|
|      |       |
|      |       |
|      |       |
|      |       |

DRAWN BY: TDA  
 CHECKED BY: JR  
 APPROVED BY: NA  
 DATE: 6/18/2018  
 PROJECT #: NA  
 SCALE: NTS

PRIMARY  
 DUCT BANK  
 PROFILE  
 AND NOTES

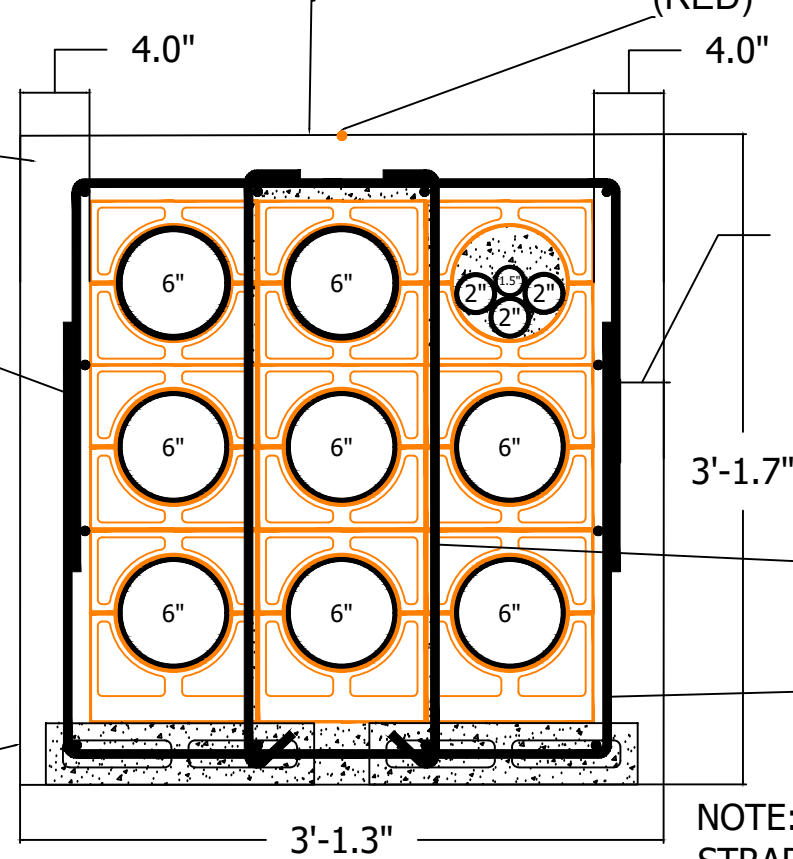
APPLY SOLOMAN APPLE RED DYE #417 IN LIQUID FORM TO TOP OF CONCRETE.  
 PLACE SAFETY/CUT TAPE 12" ABOVE THE DUCTBANK.

COPPERHEAD TRACER WIRE (RED)

3500 PSI CONCRETE

#4 REBAR (TYPICAL) SPACED AND TIED AS SHOWN WITH A MINIMUM OF 12" OVERLAP OR 40X THE REBAR DIAMETER.

3.625"X3.625"X15.625" HOLLOW CONCRETE BLOCK BASE FOR SPACERS. RUN #4 REBAR THROUGH HOLES THEN FILL BLOCK CAVITIES WITH CONCRETE.



3" CLR TYP

3'-1.7"

#4 TIES AT 12'-0" O.C.

CONDUIT SPACERS AND #4 TIES AT 6'-0" O.C.

NOTE:  
 STRAP CONDUIT TO SUPPORTS USING PLASTIC CABLE TIES. DO NOT USE WIRE.  
 EXTERIOR DIMENSIONS ARE MINIMUMS.



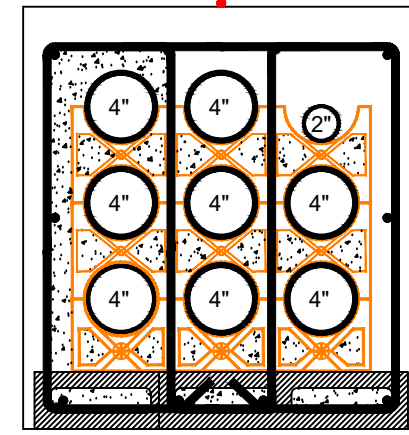
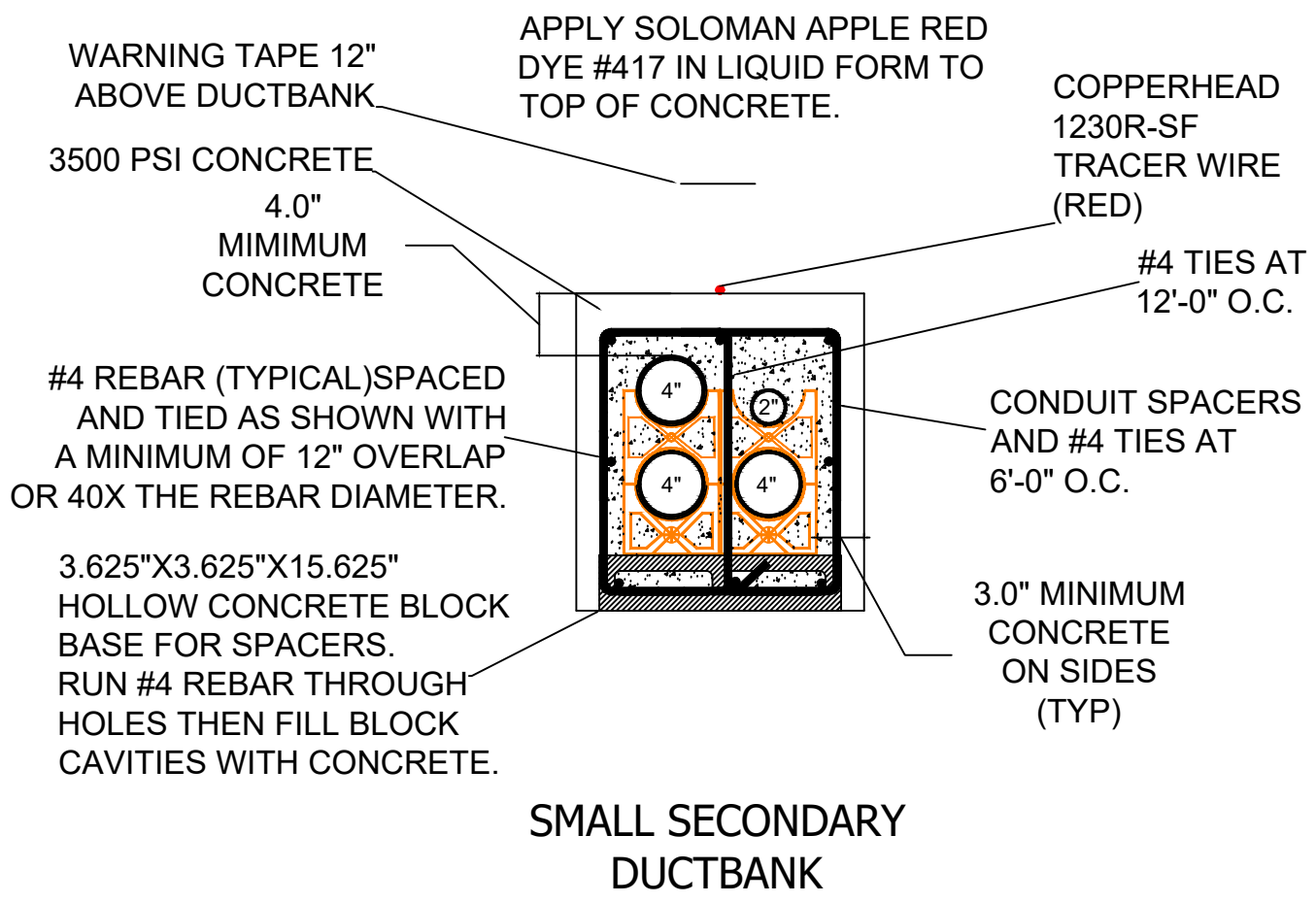
OK STATE UNIVERSITY  
ELECTRICAL  
DISTRIBUTION  
STANDARDS

| DATE | ISSUE |
|------|-------|
|      |       |
|      |       |
|      |       |

DRAWN BY: TDA  
CHECKED BY: CS  
APPROVED BY: NA  
DATE: 6/18/2018  
PROJECT #: ALL  
SCALE: 1" = 1'

SECONDARY  
DUCT BANK  
PROFILES AND  
REQUIREMENTS

SHEET NUMBER  
**SEDB-01**



NOTE:  
ALL NOTES AND CALLOUTS APPLY TO ALL DUCTBANKS.

NOTE:  
STRAP CONDUIT TO SUPPORTS USING PLASTIC CABLE TIES. DO NOT USE WIRE.

THE DUCTBANK PROFILES SHOWN HERE ARE TYPICAL OF ALL DUCTBANK REQUIREMENTS WITH ADDITIONAL STEEL, CONCRETE BLOCK AND CONCRETE FOR THE LARGER DUCTBANK.

THIS DUCTBANK DESIGN IS REQUIRED FOR SERVICES GREATER THAN 10 FEET IN LENGTH FROM THE TRANSFORMER TO THE BUILDING.  
DUCTBANK UNDER THE TRANSFORMER BASE SHALL BE BEDDED IN SAND.



| DATE | ISSUE |
|------|-------|
|      |       |
|      |       |
|      |       |

|                 |
|-----------------|
| DRAWN BY: TDA   |
| CHECKED BY: JR  |
| APPROVED BY: NA |
| DATE: 6/18/2018 |
| PROJECT #: NA   |
| SCALE: NTS      |

PRIMARY SERVICE  
 DUCT BANK  
 PROFILE  
 AND NOTES

APPLY SOLOMAN APPLE RED DYE #417 IN LIQUID FORM TO TOP OF CONCRETE.

PLACE SAFETY/CUT TAPE 12" ABOVE THE DUCTBANK.

COPPERHEAD TRACER WIRE (RED)

3500 PSI CONCRETE

4.0" CONCRETE ON TOP

#4 TIES AT 12'-0" O.C.

#4 REBAR (TYPICAL) SPACED AND TIED AS SHOWN WITH A MINIMUM OF 12" OVERLAP OR 40X THE REBAR DIAMETER.

1'-6.3"

3.0" CONCRETE ON SIDES

CONDUIT SPACERS AND #4 TIES AT 6'-0" O.C.

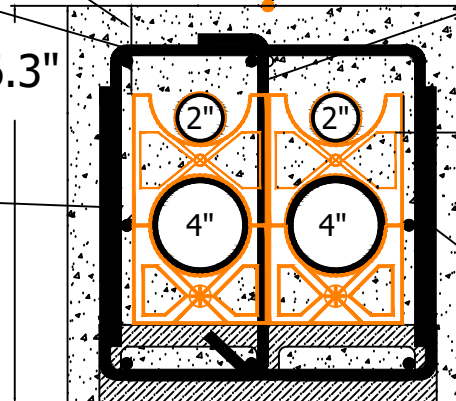
3.625"X3.625"X15.625" HOLLOW CONCRETE BLOCK BASE FOR SPACERS.

RUN #4 REBAR THROUGH HOLES THEN FILL BLOCK CAVITIES WITH CONCRETE.

1'-6.5"

NOTE:  
 STRAP CONDUIT TO SUPPORTS USING PLASTIC CABLE TIES. DO NOT USE WIRE.

EXTERIOR DIMENSIONS ARE MINIMUMS





| DATE | ISSUE |
|------|-------|
|      |       |
|      |       |
|      |       |
|      |       |

DRAWN BY: TDA  
 CHECKED BY: JR  
 APPROVED BY: NA  
 DATE: 6/18/2018  
 PROJECT #: NA  
 SCALE: 1" = 1'

SMALL PRIMARY  
 DUCT BANK  
 PROFILE  
 AND NOTES

APPLY SOLOMAN APPLE RED DYE #417 IN LIQUID FORM TO TOP OF CONCRETE.  
 PLACE SAFETY/CUT TAPE 12" ABOVE THE DUCTBANK.

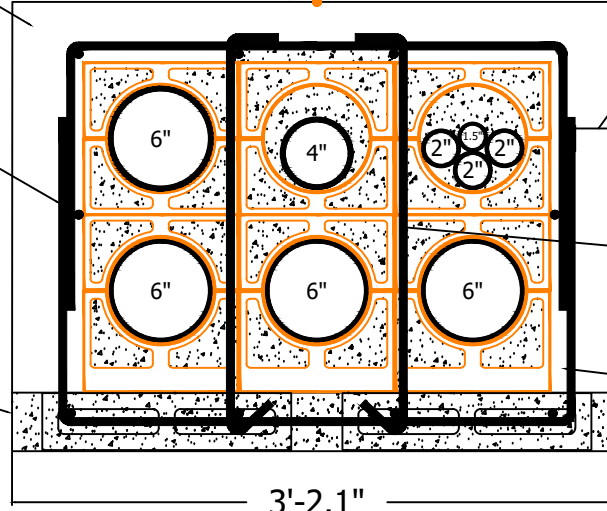
COPPERHEAD TRACER WIRE (RED)

3500 PSI CONCRETE

3" CLR TYP

#4 REBAR (TYPICAL) SPACED AND TIED AS SHOWN WITH A MINIMUM OF 12" OVERLAP OR 40X THE REBAR DIAMETER.

3.625"X3.625"X15.625" HOLLOW CONCRETE BLOCK BASE FOR SPACERS. RUN #4 REBAR THROUGH HOLES THEN FILL BLOCK CAVITIES WITH CONCRETE.



2'-4.1"

#4 TIES AT 12'-0" O.C.

CONDUIT SPACERS AND #4 TIES AT 6'-0" O.C.

3'-2.1"

NOTE:  
 STRAP CONDUIT TO SUPPORTS USING PLASTIC CABLE TIES. DO NOT USE WIRE.

EXTERIOR DIMENSIONS ARE MINIMUMS.