

APPENDIX F

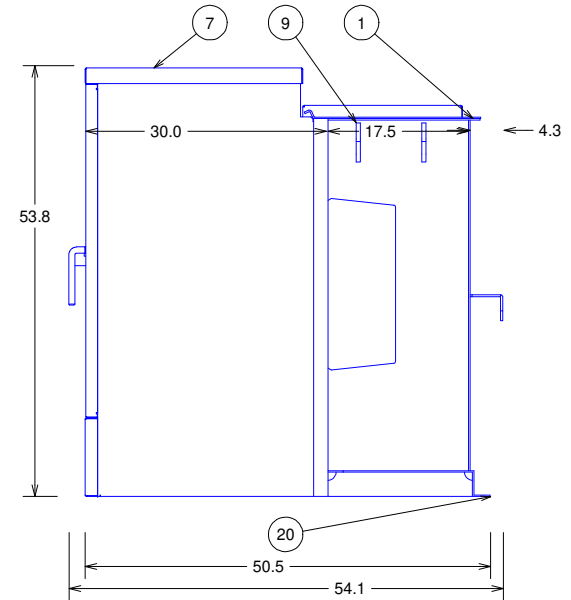
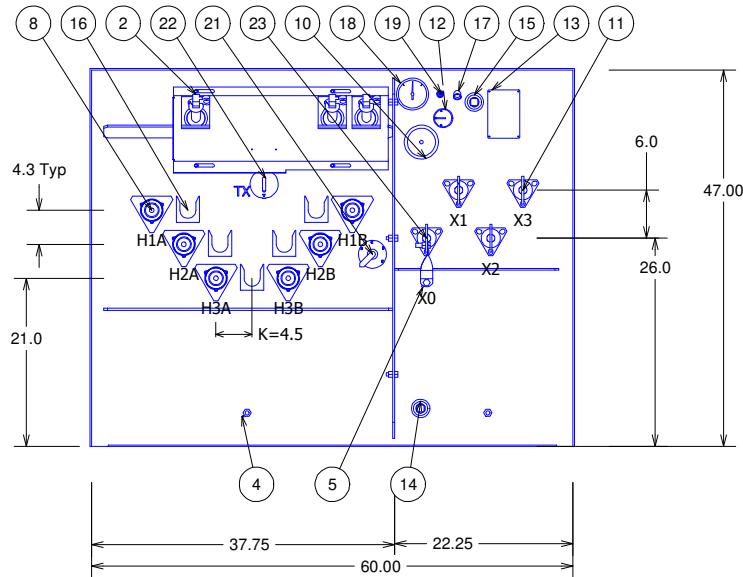
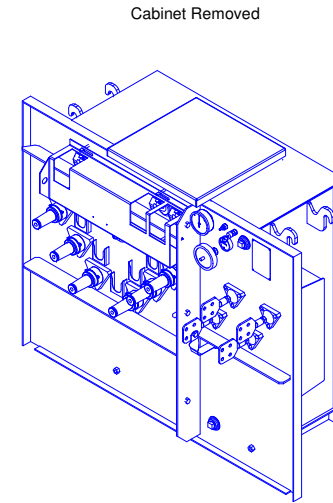
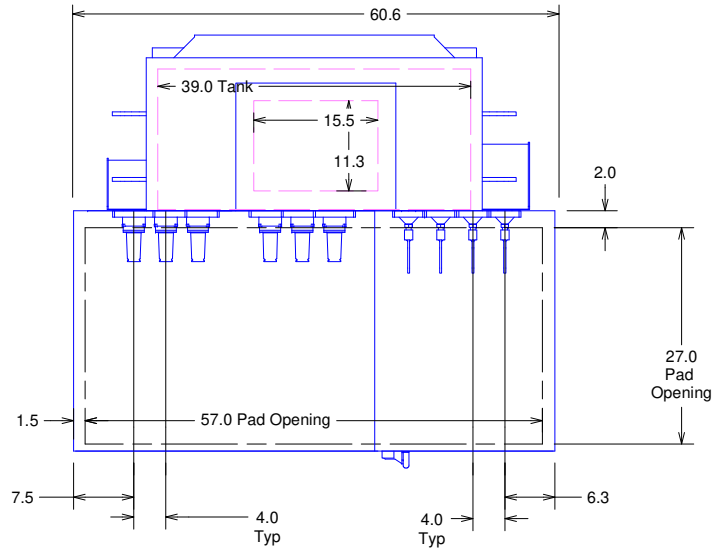
Medium Voltage Transformer and Switchgear




Last Updated 11/1/2022

ITEM	DESCRIPTION
1	Bolted Cover w/ Handhole w/ Nutguard
2	Cooper Bayonet Fusing w/ Dripshield
3	Current Limiting Backup Fuses (Internal)
4	Ground Nut .50-13 Tap
5	Ground Strap and Nut
6	18.0kV (15.3kV MCOV) Elbow Arrester (boxed)
7	High Security Cabinet w/ 1 Pentahead Door Bolt per door
8	35kV 200 Amp HV Bushing Well w/ 15kV Insert
9	Lifting Lug
10	Liquid Temperature Gauge
11	1.2kV LV Bushing w/ 4 Hole Spade
12	Magnetic Oil Level Gauge
13	Nameplate
14	One Inch Drain Plug
15	One Inch Upper Press. Conn. and Fill Plug
16	Parking Stand
17	Pressure Relief Valve
18	Pressure Vacuum Gauge
19	Schrader Valve
20	Tank Base w/ Jacking and Rolling Facilities
21	5-Position Tap Changer
22	Two Position Loadbreak Switch w/ Fuse Interlock
23	X0 Bushing

F10EFX4W
REVISIONS



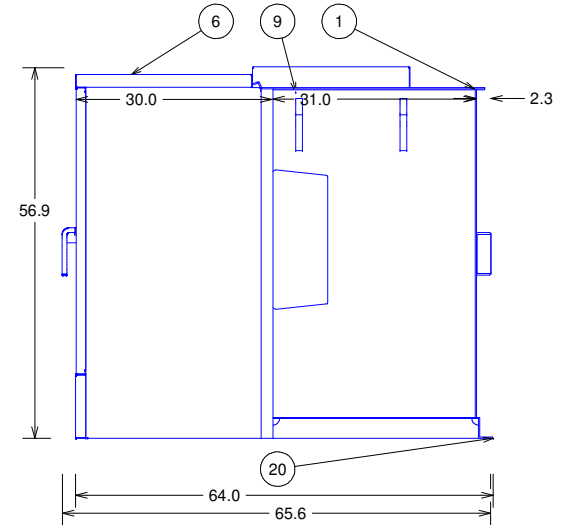
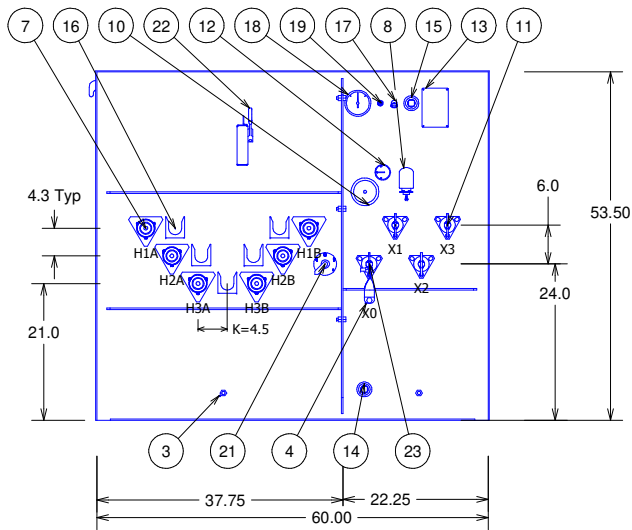
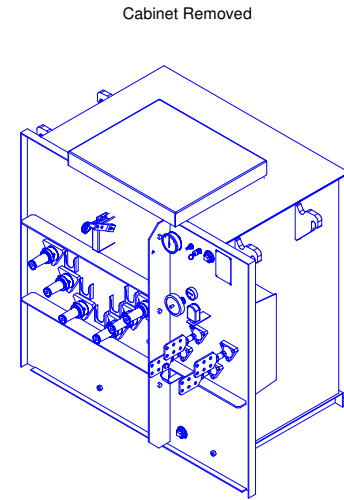
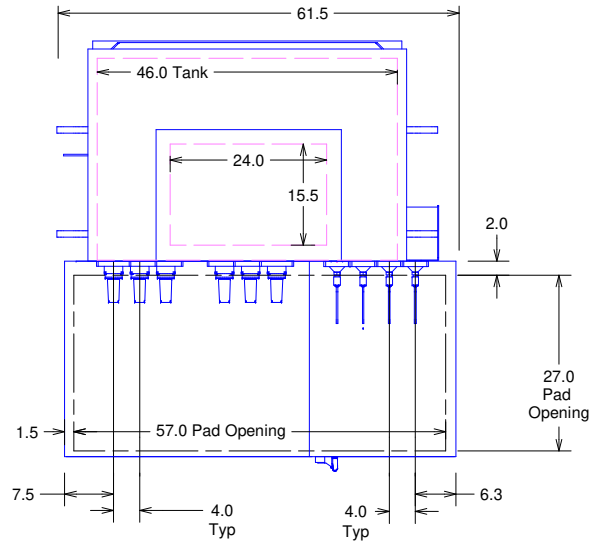
3PH Padmount Transformer 60Hz
112.5 kVA KNAN 65 AWR FR3
HV 12470D 95 kV BIL
LV 208Y/120 30 kV BIL
3.50 %Z
Approximate Weight 2496 lbs.
Munsell Green Topcoat
Mild Steel Construction
FM Approved for Outdoor Use
DESIGN #: 1

MATERIAL:		 <i>Powering Business Worldwide</i>			
ALL DIMENSIONS ARE IN INCHES [MM]					
THE INFORMATION ON THIS DOCUMENT WAS CREATED BY EATON. IT WAS DISCLOSED IN CONFIDENCE AND IS ONLY TO BE USED FOR THE PURPOSE IN WHICH IT WAS SUPPLIED.		TITLE: Distribution Transformer Outline Drawing			
THIS DRAWING HAS BEEN GENERATED FROM A 3D MODEL.		DESC: COOPER POWER SERIES THREE-PHASE PAD-MOUNTED COMPARTMENTAL TYPE			
DWG: PTP	DATE: 6/13/2022	REF: P3D V04R02M05	SHEET #: 1 OF 1	SCALE: 00	REV: 00
F10EFX4W					


ITEM	DESCRIPTION
1	Bolted Cover w/ Handhole w/ Nutguard
2	Current Limiting Backup Fuses (Internal)
3	Ground Nut .50-13 Tap
4	Ground Strap and Nut
5	18.0kV (15.3kV MCOV) Elbow Arrester (boxed)
6	High Security Cabinet w/ 1 Pentahead Door Bolt per door
7	35kV 200 Amp HV Bushing Well w/ 15kV Insert
8	LV Arrester
9	Lifting Lug
10	Liquid Temperature Gauge
11	1.2kV LV Bushing w/ 6 Hole Spade
12	Magnetic Oil Level Gauge
13	Nameplate
14	One Inch Drain Plug
15	One Inch Upper Press. Conn. and Fill Plug
16	Parking Stand
17	Pressure Relief Valve
18	Pressure Vacuum Gauge
19	Schrader Valve
20	Tank Base w/ Jacking and Rolling Facilities
21	5-Position Tap Changer
22	Vacuum Fault Interrupter
23	X0 Bushing

F10EFXKH

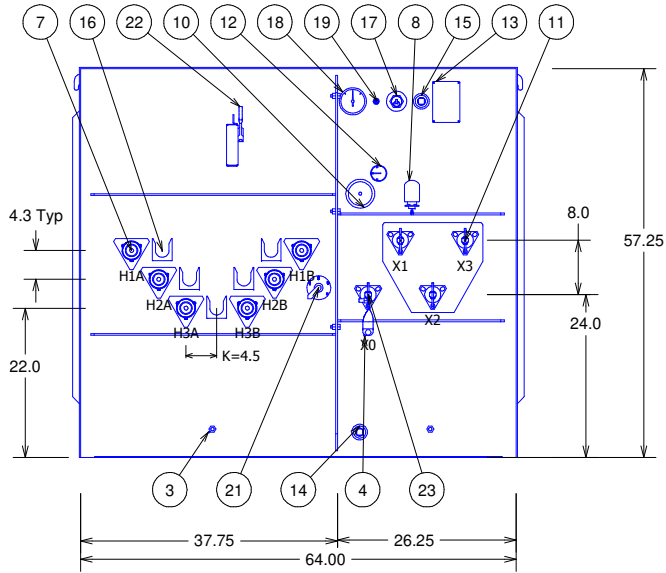
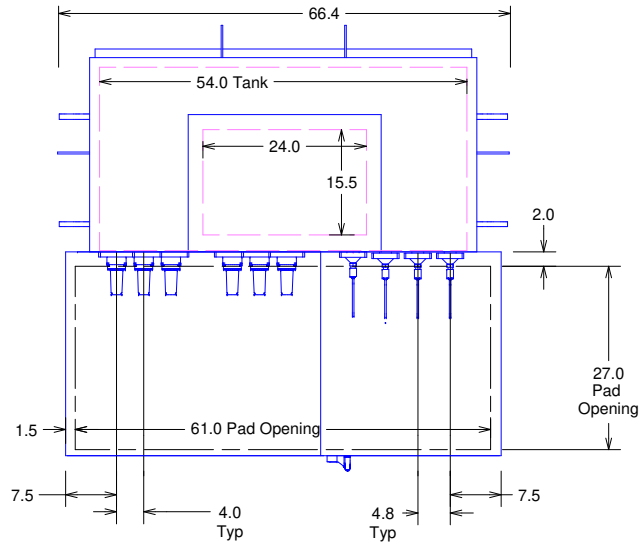
REVISIONS



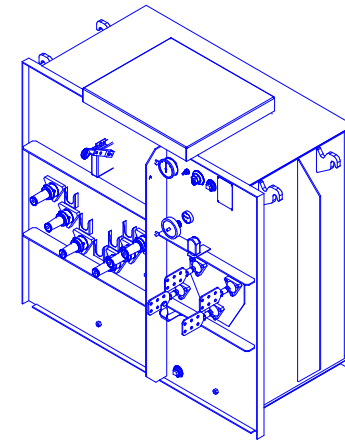
3PH Padmount Transformer 60Hz
 150.0 kVA KNAN 65 AWR FR3
 HV 12470D 95 kV BIL
 LV 208Y/120 30 kV BIL
 3.77 %Z
 Approximate Weight 3842 lbs.
 Munsell Green Topcoat
 Mild Steel Construction
 FM Approved for Outdoor Use
 DESIGN #: 1

MATERIAL:		 <i>Powering Business Worldwide</i>			
ALL DIMENSIONS ARE IN INCHES [MM]					
THE INFORMATION ON THIS DOCUMENT WAS CREATED BY EATON. IT WAS DISCLOSED IN CONFIDENCE AND IS ONLY TO BE USED FOR THE PURPOSE IN WHICH IT WAS SUPPLIED.		TITLE: Distribution Transformer Outline Drawing DESC: COOPER POWER SERIES THREE-PHASE PAD-MOUNTED COMPARTMENTAL TYPE			
DWG: PTP	DATE: 6/13/2022	REF: P3D V04R02M05	SHEET #: 1 OF 1	SCALE: 00	REV: 00
THIS DRAWING HAS BEEN GENERATED FROM A 3D MODEL.		F10EFXKH			

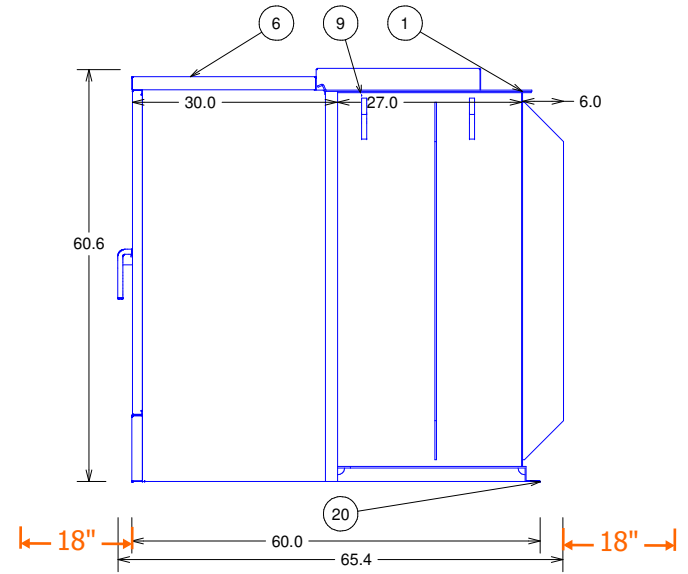
ITEM	DESCRIPTION
1	Bolted Cover w/ Handhole w/ Nutguard
2	Current Limiting Backup Fuses (Internal)
3	Ground Nut .50-13 Tap
4	Ground Strap and Nut
5	18.0kV (15.3kV MCOV) Elbow Arrester (boxed)
6	High Security Cabinet w/ 1 Pentahead Door Bolt per door
7	35kV 200 Amp HV Bushing Well w/ 15kV Insert
8	LV Arrester
9	Lifting Lug
10	Liquid Temperature Gauge
11	1.2kV LV Bushing w/ 6 Hole Spade
12	Magnetic Oil Level Gauge
13	Nameplate
14	One Inch Drain Plug
15	One Inch Upper Press. Conn. and Fill Plug
16	Parking Stand
17	Pressure Relief Valve
18	Pressure Vacuum Gauge
19	Schrader Valve
20	Tank Base w/ Jacking and Rolling Facilities
21	5-Position Tap Changer
22	Vacuum Fault Interrupter
23	X0 Bushing




Cabinet Removed



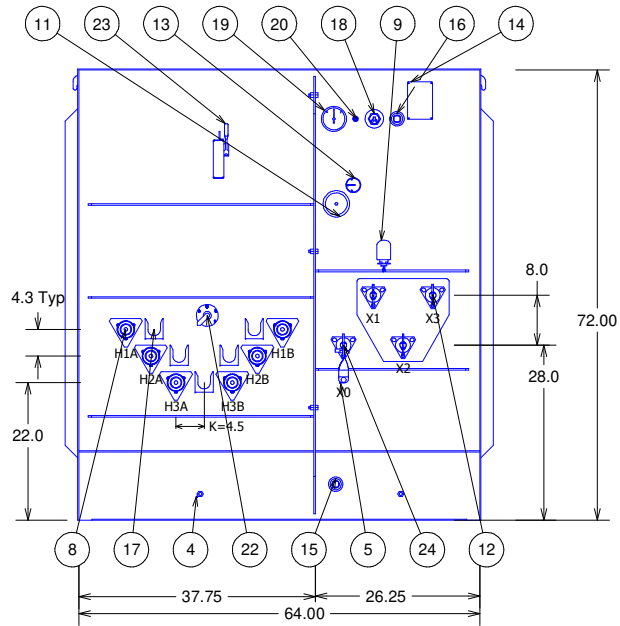
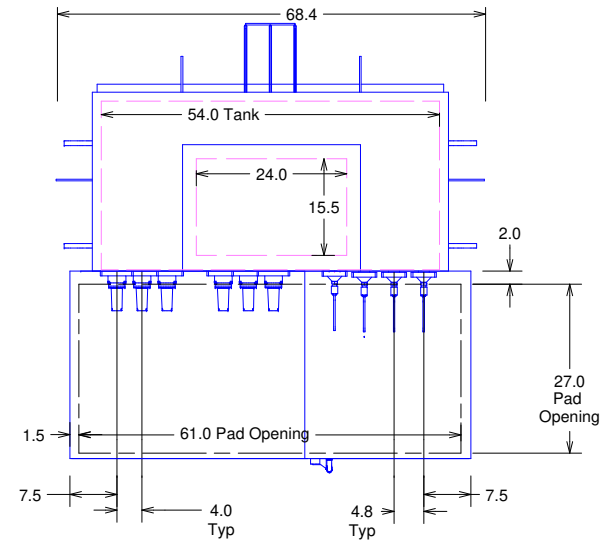
F10EFXNF
REVISIONS



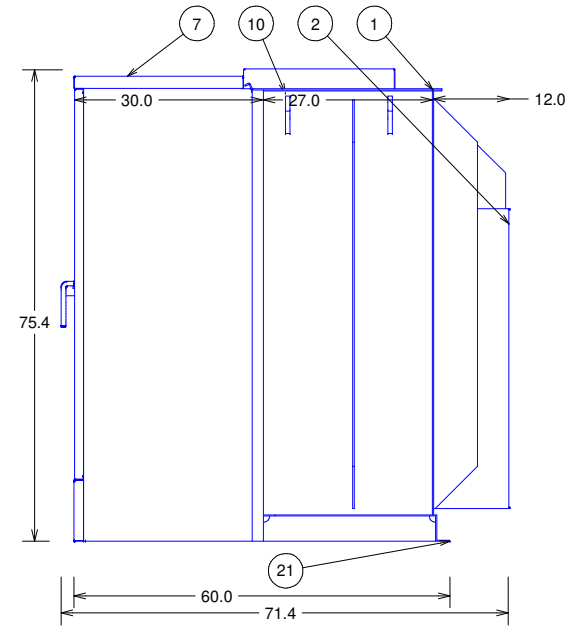
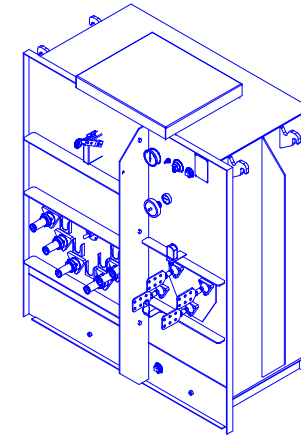
3PH Padmount Transformer 60Hz
 225.0 kVA KNAN 65 AWR FR3
 HV 12470D 95 kV BIL
 LV 208Y/120 30 kV BIL
 4.68 %Z
 Approximate Weight 4192 lbs.
 Munsell Green Topcoat
 Mild Steel Construction
 FM Approved for Outdoor Use
 DESIGN #: 1

MATERIAL:		 <i>Powering Business Worldwide</i>			
ALL DIMENSIONS ARE IN INCHES [MM]					
THE INFORMATION ON THIS DOCUMENT WAS CREATED BY EATON. IT WAS DISCLOSED IN CONFIDENCE AND IS ONLY TO BE USED FOR THE PURPOSE IN WHICH IT WAS SUPPLIED.		TITLE: Distribution Transformer Outline Drawing DESC: COOPER POWER SERIES THREE-PHASE PAD-MOUNTED COMPARTMENTAL TYPE			
DWG: PTP	DATE: 6/13/2022	REF: P3D V04R02M05	SHEET #: 1 OF 1	SCALE: 00	REV: 00
THIS DRAWING HAS BEEN GENERATED FROM A 3D MODEL.		F10EFXNF			

ITEM	DESCRIPTION
1	Bolted Cover w/ Handhole w/ Nutguard
2	Cooling Corrugate
3	Current Limiting Backup Fuses (Internal)
4	Ground Nut .50-13 Tap
5	Ground Strap and Nut
6	18.0kV (15.3kV MCOV) Elbow Arrester (boxed)
7	High Security Cabinet w/ 1 Pentahead Door Bolt per door
8	35kV 200 Amp HV Bushing Well w/ 15kV Insert
9	LV Arrester
10	Lifting Lug
11	Liquid Temperature Gauge
12	1.2kV LV Bushing w/ 6 Hole Spade
13	Magnetic Oil Level Gauge
14	Nameplate
15	One Inch Drain Plug
16	One Inch Upper Press. Conn. and Fill Plug
17	Parking Stand
18	Pressure Relief Valve
19	Pressure Vacuum Gauge
20	Schrader Valve
21	Tank Base w/ Jacking and Rolling Facilities
22	5-Position Tap Changer
23	Vacuum Fault Interrupter
24	X0 Bushing




Cabinet Removed

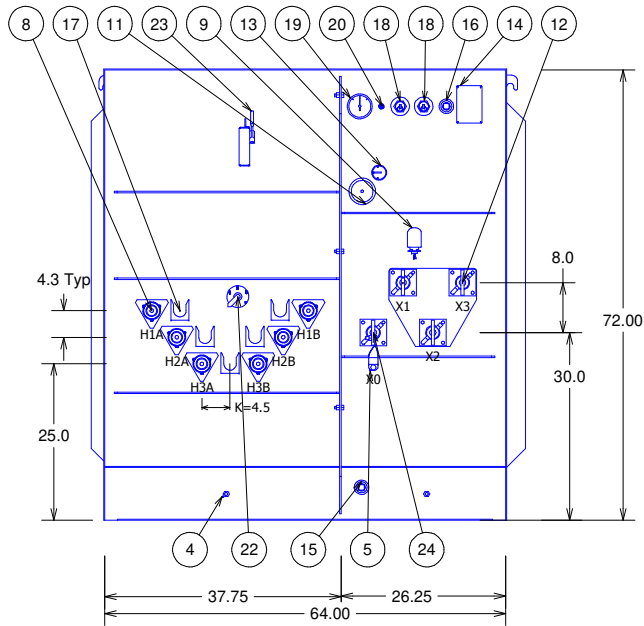
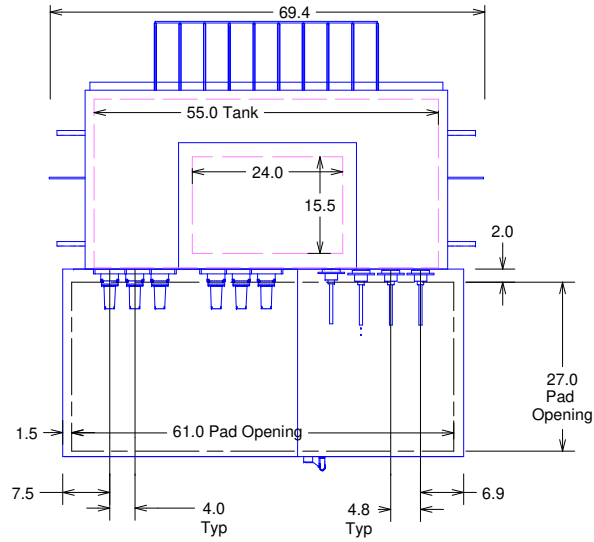


F10EFXRC
REVISIONS

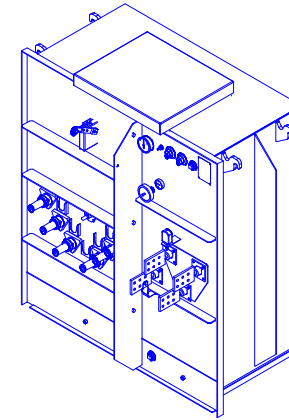
3PH Padmount Transformer 60Hz
300.0 kVA KNAN 65 AWR FR3
HV 12470D 95 kV BIL
LV 208Y/120 30 kV BIL
3.36 %Z
Approximate Weight 5247 lbs.
Munsell Green Topcoat
Mild Steel Construction
FM Approved for Outdoor Use
DESIGN #: 1

MATERIAL:		 Powering Business Worldwide				
ALL DIMENSIONS ARE IN INCHES [MM]						
THE INFORMATION ON THIS DOCUMENT WAS CREATED BY EATON. IT WAS DISCLOSED IN CONFIDENCE AND IS ONLY TO BE USED FOR THE PURPOSE IN WHICH IT WAS SUPPLIED.		TITLE: Distribution Transformer Outline Drawing DESC: COOPER POWER SERIES THREE-PHASE PAD-MOUNTED COMPARTMENTAL TYPE				
THIS DRAWING HAS BEEN GENERATED FROM A 3D MODEL.	DWG: PTP	DATE: 6/13/2022	REF: P3D V04R02M05	SHEET #: 1 OF 1	SCALE: 00	REV: 00
F10EFXRC						

ITEM	DESCRIPTION
1	Bolted Cover w/ Handhole w/ Nutguard
2	Cooling Corrugate
3	Current Limiting Backup Fuses (Internal)
4	Ground Nut .50-13 Tap
5	Ground Strap and Nut
6	18.0kV (15.3kV MCOV) Elbow Arrester (boxed)
7	High Security Cabinet w/ 1 Pentahead Door Bolt per door
8	35kV 200 Amp HV Bushing Well w/ 15kV Insert
9	LV Arrester
10	Lifting Lug
11	Liquid Temperature Gauge
12	1.2kV LV Bushing w/ 6 Hole Spade
13	Magnetic Oil Level Gauge
14	Nameplate
15	One Inch Drain Plug
16	One Inch Upper Press. Conn. and Fill Plug
17	Parking Stand
18	Pressure Relief Valve
19	Pressure Vacuum Gauge
20	Schrader Valve
21	Tank Base w/ Jacking and Rolling Facilities
22	5-Position Tap Changer
23	Vacuum Fault Interrupter
24	X0 Bushing

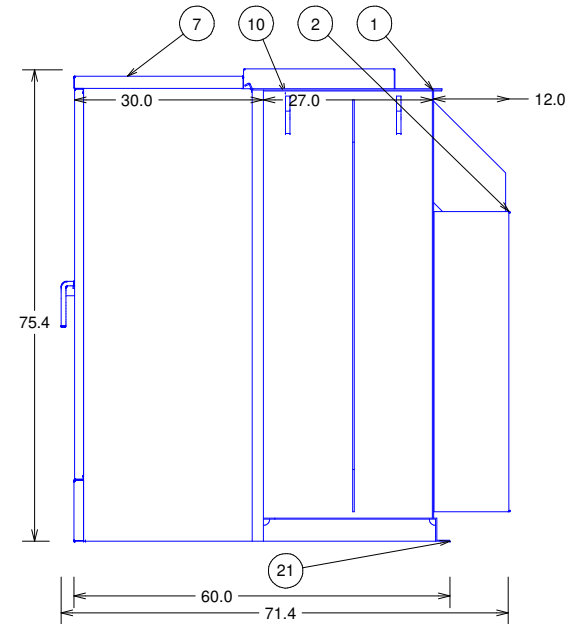


Cabinet Removed




F10EFXV3

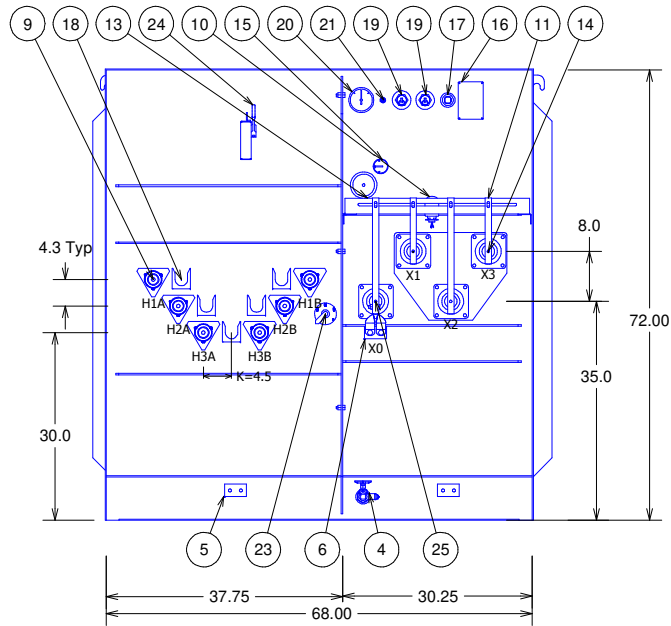
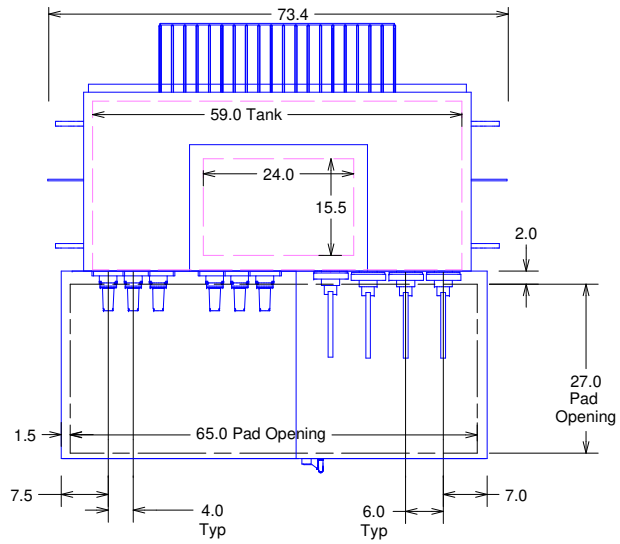
REVISIONS



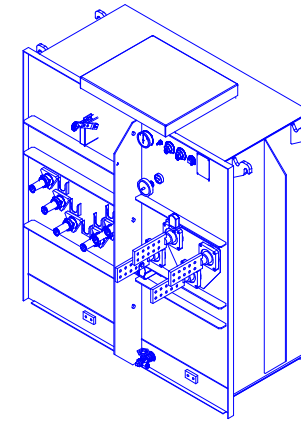
3PH Padmount Transformer 60Hz
 500.0 kVA KNAN 65 AWR FR3
 HV 12470D 95 kV BIL
 LV 208Y/120 30 kV BIL
 4.35 %Z
 Approximate Weight 6282 lbs.
 Munsell Green Topcoat
 Mild Steel Construction
 FM Approved for Outdoor Use
 DESIGN #: 1

MATERIAL:		 <i>Powering Business Worldwide</i>				
ALL DIMENSIONS ARE IN INCHES [MM]						
THE INFORMATION ON THIS DOCUMENT WAS CREATED BY EATON. IT WAS DISCLOSED IN CONFIDENCE AND IS ONLY TO BE USED FOR THE PURPOSE IN WHICH IT WAS SUPPLIED.		TITLE: Distribution Transformer Outline Drawing DESC: COOPER POWER SERIES THREE-PHASE PAD-MOUNTED COMPARTMENTAL TYPE				
THIS DRAWING HAS BEEN GENERATED FROM A 3D MODEL.	DWG: PTP	DATE: 6/13/2022	REF: P3D V04R02M05	SHEET #: 1 OF 1	SCALE:	REV: 00
F10EFXV3						

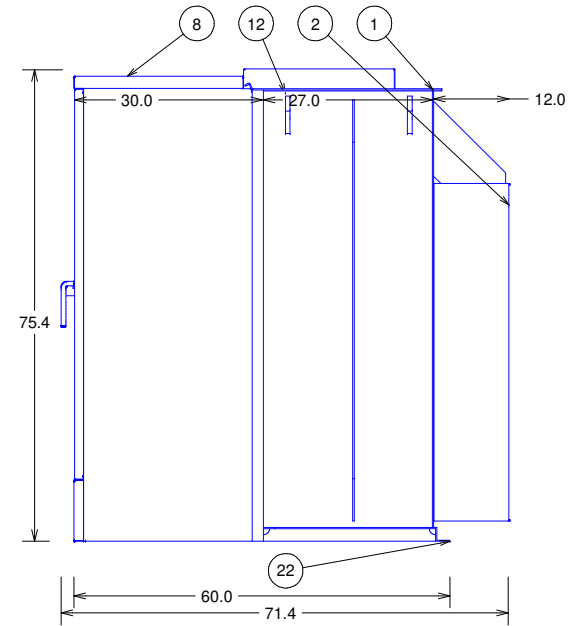
ITEM	DESCRIPTION
1	Bolted Cover w/ Handhole w/ Nutguard
2	Cooling Corrugate
3	Current Limiting Backup Fuses (Internal)
4	Drain Valve with Sampler
5	Ground Pad .50-13 Tap
6	Ground Strap and Pad
7	18.0kV (15.3kV MCOV) Elbow Arrester (boxed)
8	High Security Cabinet w/ 1 Pentahead Door Bolt per door
9	35kV 200 Amp HV Bushing Well w/ 15kV Insert
10	LV Arrester
11	LV Bushing Support
12	Lifting Lug
13	Liquid Temperature Gauge
14	1.2kV LV Bushing w/10 Hole Spade Supported
15	Magnetic Oil Level Gauge
16	Nameplate
17	One Inch Upper Press. Conn. and Fill Plug
18	Parking Stand
19	Pressure Relief Valve
20	Pressure Vacuum Gauge
21	Schrader Valve
22	Tank Base w/ Jacking and Rolling Facilities
23	5-Position Tap Changer
24	Vacuum Fault Interrupter
25	X0 Bushing




Cabinet Removed



F10EFXXS
REVISIONS



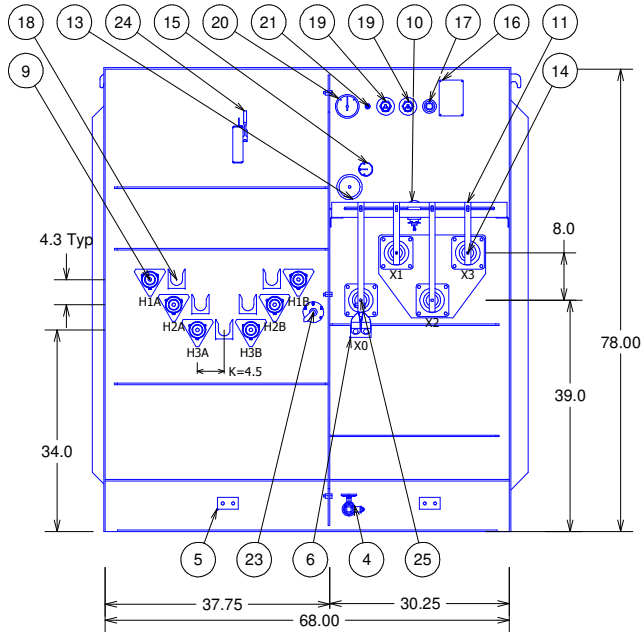
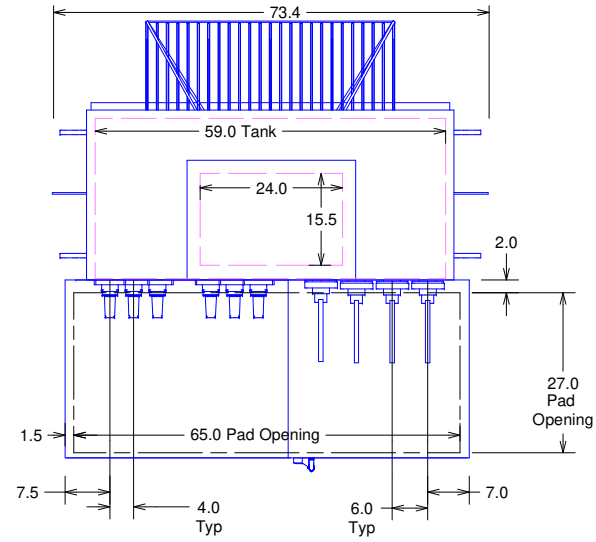
3PH Padmount Transformer 60Hz
750.0 kVA KNAN 65 AWR FR3
HV 12470D 95 kV BIL
LV 208Y/120 30 kV BIL
5.72 %IZ
Approximate Weight 7816 lbs.
Munsell Green Topcoat
Mild Steel Construction
FM Approved for Outdoor Use
DESIGN #: 1

MATERIAL:		 <i>Powering Business Worldwide</i>	
ALL DIMENSIONS ARE IN INCHES [MM]			
THE INFORMATION ON THIS DOCUMENT WAS CREATED BY EATON. IT WAS DISCLOSED IN CONFIDENCE AND IS ONLY TO BE USED FOR THE PURPOSE IN WHICH IT WAS SUPPLIED.		TITLE: Distribution Transformer Outline Drawing	
THIS DRAWING HAS BEEN GENERATED FROM A 3D MODEL.		DESC: COOPER POWER SERIES THREE-PHASE PAD-MOUNTED COMPARTMENTAL TYPE	
DWG: PTP	DATE: 6/13/2022	REF: P3D V04R02M05	SHEET #: 1 OF 1
		SCALE: 1	REV: 00
F10EFXXS			

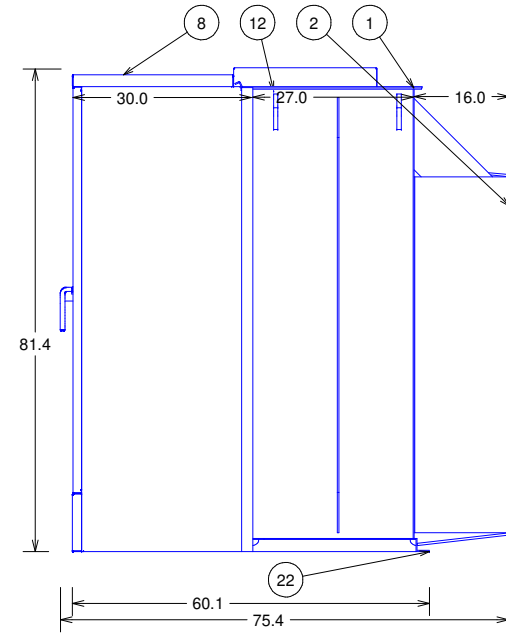
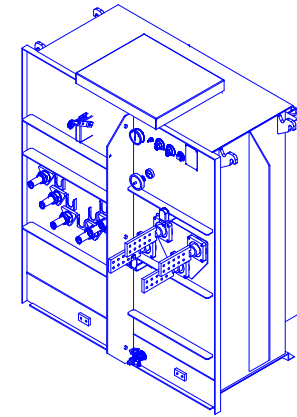
ITEM	DESCRIPTION
1	Bolted Cover w/ Handhole w/ Nutguard
2	Cooling Corrugate
3	Current Limiting Backup Fuses (Internal)
4	Drain Valve with Sampler
5	Ground Pad .50-13 Tap
6	Ground Strap and Pad
7	18.0kV (15.3kV MCOV) Elbow Arrester (boxed)
8	High Security Cabinet w/ 1 Pentahead Door Bolt per door
9	35kV 200 Amp HV Bushing Well w/ 15kV Insert
10	LV Arrester
11	LV Bushing Support
12	Lifting Lug
13	Liquid Temperature Gauge
14	1.2kV LV Bushing w/10 Hole Spade Supported
15	Magnetic Oil Level Gauge
16	Nameplate
17	One Inch Upper Press. Conn. and Fill Plug
18	Parking Stand
19	Pressure Relief Valve
20	Pressure Vacuum Gauge
21	Schrader Valve
22	Tank Base w/ Jacking and Rolling Facilities
23	5-Position Tap Changer
24	Vacuum Fault Interrupter
25	X0 Bushing

F10EFY16


REVISIONS



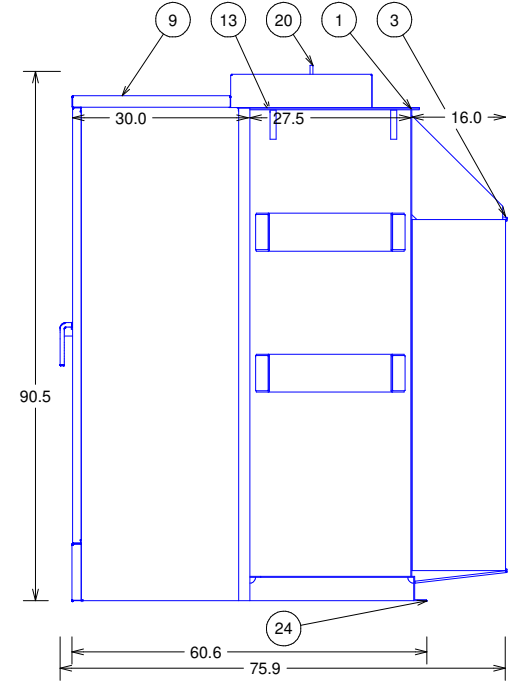
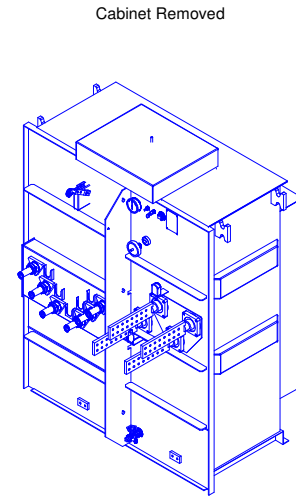
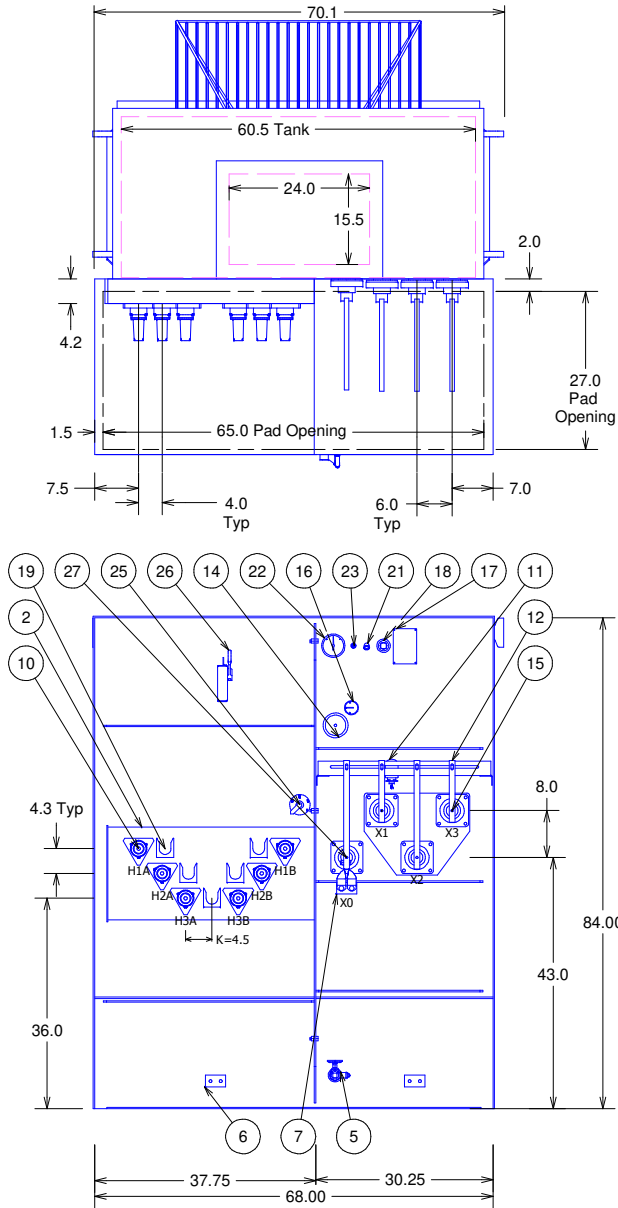
Cabinet Removed



3PH Padmount Transformer 60Hz
 1000.0 kVA KNAN 65 AWR FR3
 HV 12470D 95 kV BIL
 LV 208Y/120 30 kV BIL
 5.73 %IZ
 Approximate Weight 9364 lbs.
 Munsell Green Topcoat
 Mild Steel Construction
 FM Approved for Outdoor Use
 DESIGN #: 1


MATERIAL:		 Powering Business Worldwide	
ALL DIMENSIONS ARE IN INCHES [MM]			
THE INFORMATION ON THIS DOCUMENT WAS CREATED BY EATON. IT WAS DISCLOSED IN CONFIDENCE AND IS ONLY TO BE USED FOR THE PURPOSE IN WHICH IT WAS SUPPLIED.		TITLE: Distribution Transformer Outline Drawing	
THIS DRAWING HAS BEEN GENERATED FROM A 3D MODEL.		DESC: COOPER POWER SERIES THREE-PHASE PAD-MOUNTED COMPARTMENTAL TYPE	
DWG: PTP	DATE: 6/13/2022	REF: P3D V04R02M05	SHEET #: 1 OF 1
			SCALE: 00
F10EFY16			

ITEM	DESCRIPTION
1	Welded Cover w/ Handhole
2	Bushing Box
3	Cooling Corrugate
4	Current Limiting Backup Fuses (Internal)
5	Drain Valve with Sampler
6	Ground Pad .50-13 Tap
7	Ground Strap and Pad
8	18.0kV (15.3kV MCOV) Elbow Arrester (boxed)
9	High Security Cabinet w/ 1 Pentahead Door Bolt per door
10	35kV 200 Amp HV Bushing Well w/ 15kV Insert
11	LV Arrester
12	LV Bushing Support
13	Lifting Lug
14	Liquid Temperature Gauge
15	1.2kV LV Bushing w/16 Hole Spade Supported
16	Magnetic Oil Level Gauge
17	Nameplate
18	One Inch Upper Press. Conn. and Fill Plug
19	Parking Stand
20	Pressure Relief Device
21	Pressure Relief Valve
22	Pressure Vacuum Gauge
23	Schrader Valve
24	Tank Base w/ Jacking and Rolling Facilities
25	5-Position Tap Changer
26	Vacuum Fault Interrupter
27	X0 Bushing



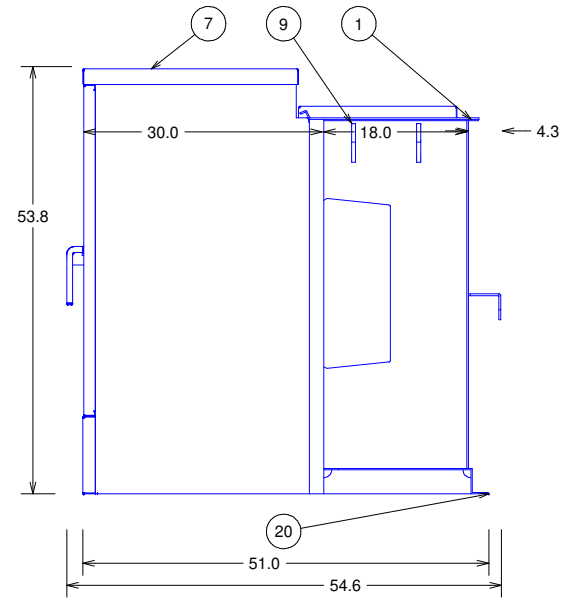
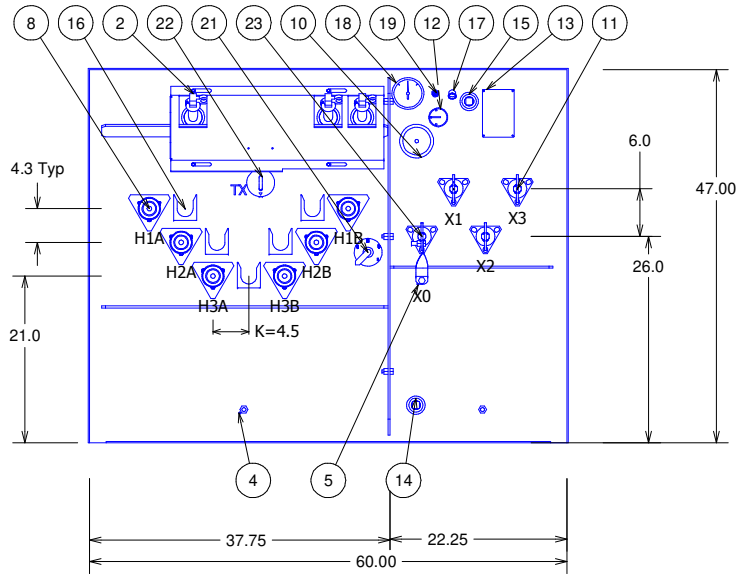
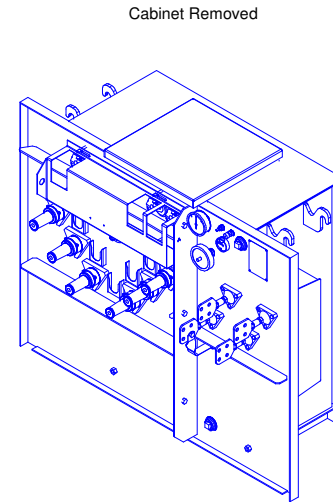
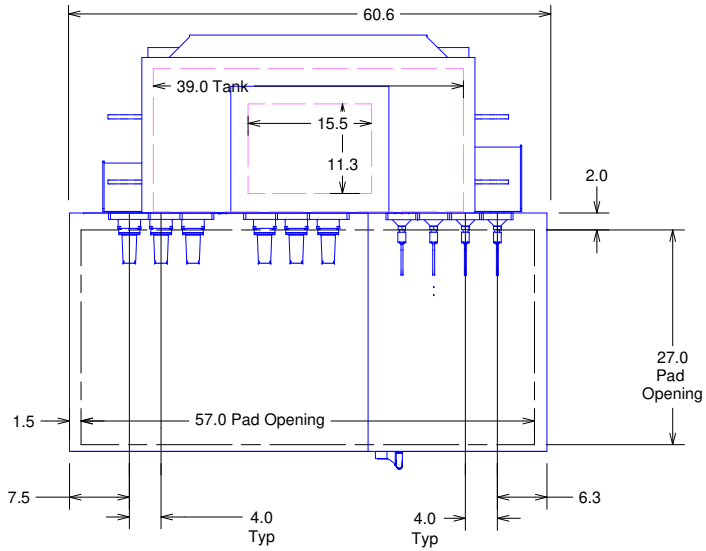
3PH Padmount Transformer 60Hz
 1500.0 kVA KNAN 65 AWR FR3
 HV 12470D 95 kV BIL
 LV 208Y/120 30 kV BIL
 5.75 %IZ
 Approximate Weight 12496 lbs.
 Munsell Green Topcoat
 Mild Steel Construction
 FM Approved for Outdoor Use
 DESIGN #: 1

F10EFY3Z
 REVISIONS


MATERIAL:		 Powering Business Worldwide				
ALL DIMENSIONS ARE IN INCHES [MM]						
THE INFORMATION ON THIS DOCUMENT WAS CREATED BY EATON. IT WAS DISCLOSED IN CONFIDENCE AND IS ONLY TO BE USED FOR THE PURPOSE IN WHICH IT WAS SUPPLIED.		TITLE: Distribution Transformer Outline Drawing DESC: COOPER POWER SERIES THREE-PHASE PAD-MOUNTED COMPARTMENTAL TYPE				
THIS DRAWING HAS BEEN GENERATED FROM A 3D MODEL.	DWG: PTP	DATE: 6/13/2022	REF: P3D V04R02M05	SHEET #: 1 OF 1	SCALE:	REV: 00
F10EFY3Z						

ITEM	DESCRIPTION
1	Bolted Cover w/ Handhole w/ Nutguard
2	Cooper Bayonet Fusing w/ Dripshield
3	Current Limiting Backup Fuses (Internal)
4	Ground Nut .50-13 Tap
5	Ground Strap and Nut
6	18.0kV (15.3kV MCOV) Elbow Arrester (boxed)
7	High Security Cabinet w/ 1 Pentahead Door Bolt per door
8	35kV 200 Amp HV Bushing Well w/ 15kV Insert
9	Lifting Lug
10	Liquid Temperature Gauge
11	1.2kV LV Bushing w/ 4 Hole Spade
12	Magnetic Oil Level Gauge
13	Nameplate
14	One Inch Drain Plug
15	One Inch Upper Press. Conn. and Fill Plug
16	Parking Stand
17	Pressure Relief Valve
18	Pressure Vacuum Gauge
19	Schrader Valve
20	Tank Base w/ Jacking and Rolling Facilities
21	5-Position Tap Changer
22	Two Position Loadbreak Switch w/ Fuse Interlock
23	X0 Bushing

F10EFY7B
REVISIONS

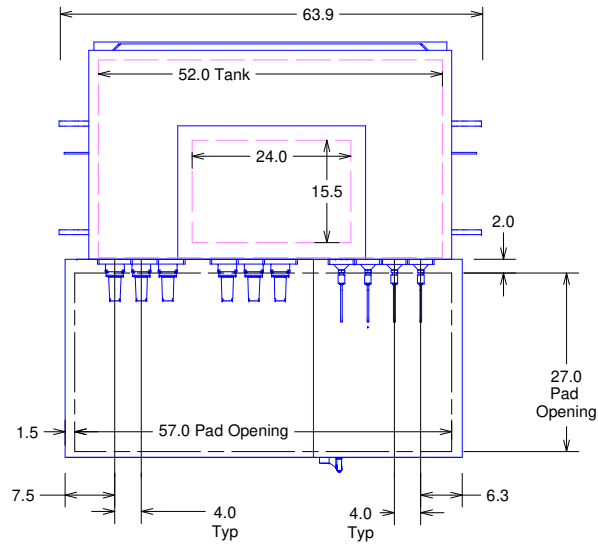


3PH Padmount Transformer 60Hz
112.5 kVA KNAN 65 AWR FR3
HV 12470D 95 kV BIL
LV 480Y/277 30 kV BIL
3.13 %Z
Approximate Weight 2500 lbs.
Munsell Green Topcoat
Mild Steel Construction
FM Approved for Outdoor Use
DESIGN #: 1

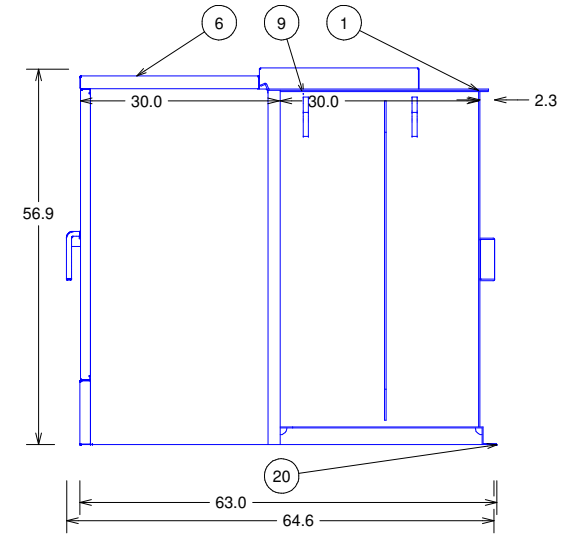
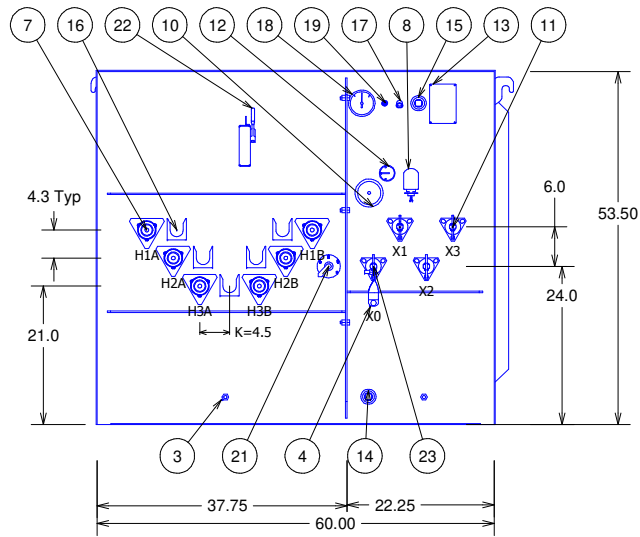
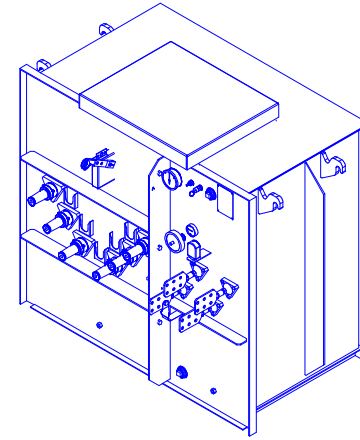
MATERIAL:		 <i>Powering Business Worldwide</i>	
ALL DIMENSIONS ARE IN INCHES [MM]			
THE INFORMATION ON THIS DOCUMENT WAS CREATED BY EATON. IT WAS DISCLOSED IN CONFIDENCE AND IS ONLY TO BE USED FOR THE PURPOSE IN WHICH IT WAS SUPPLIED.		TITLE: Distribution Transformer Outline Drawing	
THIS DRAWING HAS BEEN GENERATED FROM A 3D MODEL.		DESC: COOPER POWER SERIES THREE-PHASE PAD-MOUNTED COMPARTMENTAL TYPE	
DWG: PTP	DATE: 6/13/2022	REF: P3D V04R02M05	SHEET #: 1 OF 1
			SCALE: 00
		F10EFY7B	

ITEM	DESCRIPTION
1	Bolted Cover w/ Handhole w/ Nutguard
2	Current Limiting Backup Fuses (Internal)
3	Ground Nut .50-13 Tap
4	Ground Strap and Nut
5	18.0kV (15.3kV MCOV) Elbow Arrester (boxed)
6	High Security Cabinet w/ 1 Pentahead Door Bolt per door
7	35kV 200 Amp HV Bushing Well w/ 15kV Insert
8	LV Arrester
9	Lifting Lug
10	Liquid Temperature Gauge
11	1.2kV LV Bushing w/ 6 Hole Spade
12	Magnetic Oil Level Gauge
13	Nameplate
14	One Inch Drain Plug
15	One Inch Upper Press. Conn. and Fill Plug
16	Parking Stand
17	Pressure Relief Valve
18	Pressure Vacuum Gauge
19	Schrader Valve
20	Tank Base w/ Jacking and Rolling Facilities
21	5-Position Tap Changer
22	Vacuum Fault Interrupter
23	X0 Bushing


F10EFYBB
REVISIONS



Cabinet Removed



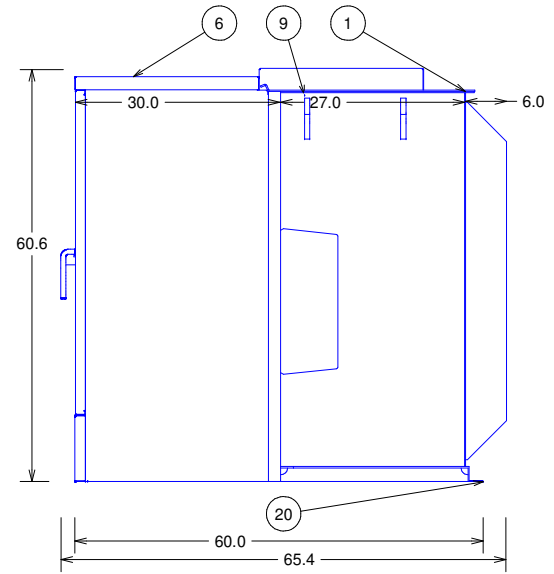
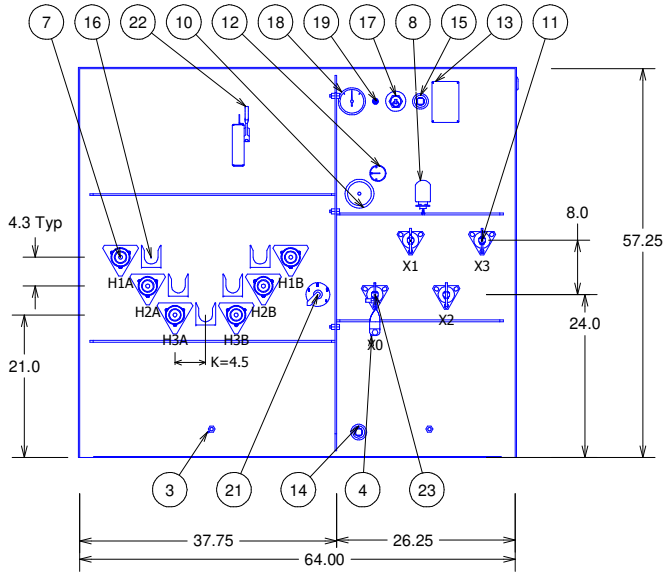
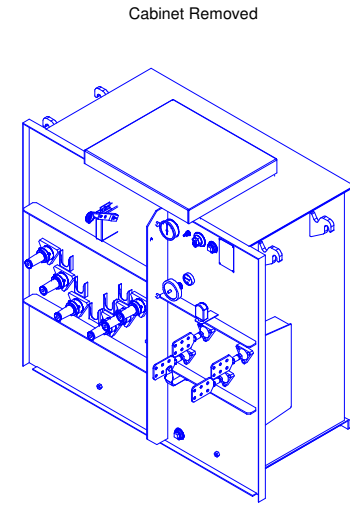
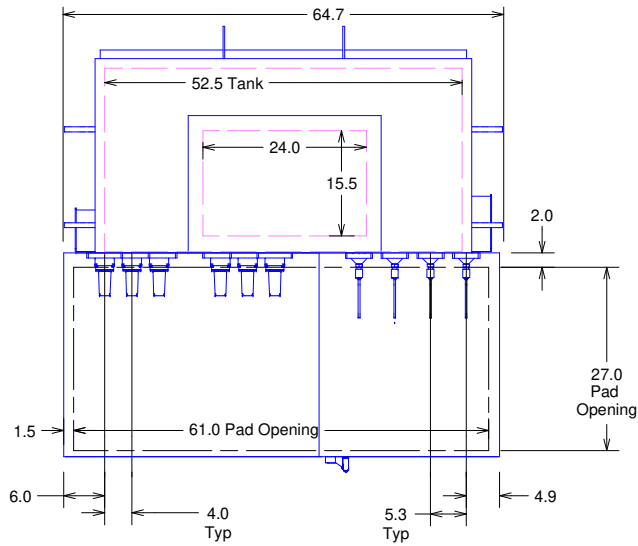
3PH Padmount Transformer 60Hz
150.0 kVA KNAN 65 AWR FR3
HV 12470D 95 kV BIL
LV 480Y/277 30 kV BIL
4.65 %IZ
Approximate Weight 3925 lbs.
Munsell Green Topcoat
Mild Steel Construction
FM Approved for Outdoor Use
DESIGN #: 1

MATERIAL:		 <i>Powering Business Worldwide</i>				
ALL DIMENSIONS ARE IN INCHES [MM]						
THE INFORMATION ON THIS DOCUMENT WAS CREATED BY EATON. IT WAS DISCLOSED IN CONFIDENCE AND IS ONLY TO BE USED FOR THE PURPOSE IN WHICH IT WAS SUPPLIED.		TITLE: Distribution Transformer Outline Drawing DESC: COOPER POWER SERIES THREE-PHASE PAD-MOUNTED COMPARTMENTAL TYPE				
THIS DRAWING HAS BEEN GENERATED FROM A 3D MODEL.	DWG: PTP	DATE: 6/13/2022	REF: P3D V04R02M05	SHEET #: 1 OF 1	SCALE:	REV: 00
F10EFYBB						


ITEM	DESCRIPTION
1	Bolted Cover w/ Handhole w/ Nutguard
2	Current Limiting Backup Fuses (Internal)
3	Ground Nut .50-13 Tap
4	Ground Strap and Nut
5	18.0kV (15.3kV MCOV) Elbow Arrester (boxed)
6	High Security Cabinet w/ 1 Pentahead Door Bolt per door
7	35kV 200 Amp HV Bushing Well w/ 15kV Insert
8	LV Arrester
9	Lifting Lug
10	Liquid Temperature Gauge
11	1.2kV LV Bushing w/ 6 Hole Spade
12	Magnetic Oil Level Gauge
13	Nameplate
14	One Inch Drain Plug
15	One Inch Upper Press. Conn. and Fill Plug
16	Parking Stand
17	Pressure Relief Valve
18	Pressure Vacuum Gauge
19	Schrader Valve
20	Tank Base w/ Jacking and Rolling Facilities
21	5-Position Tap Changer
22	Vacuum Fault Interrupter
23	X0 Bushing

F10EFYF3

REVISIONS

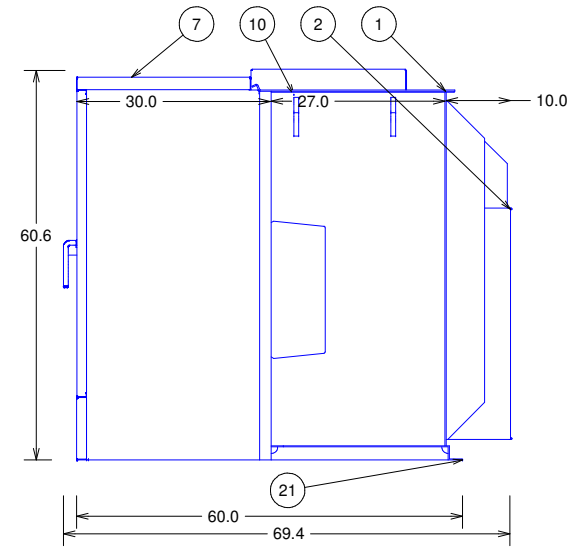
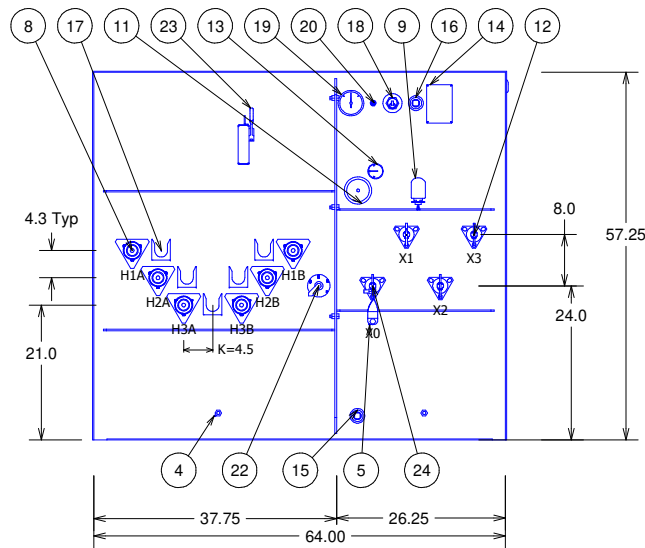
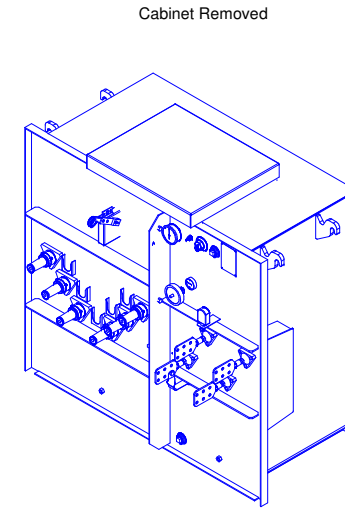
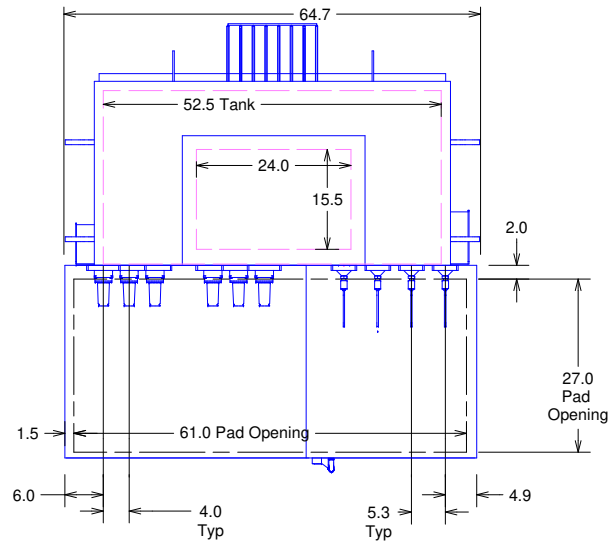


3PH Padmount Transformer 60Hz
 225.0 kVA KNAN 65 AWR FR3
 HV 12470D 95 kV BIL
 LV 480Y/277 30 kV BIL
 4.91 %Z
 Approximate Weight 4097 lbs.
 Munsell Green Topcoat
 Mild Steel Construction
 FM Approved for Outdoor Use
 DESIGN #: 1


MATERIAL:		 Powering Business Worldwide				
ALL DIMENSIONS ARE IN INCHES [MM]						
THE INFORMATION ON THIS DOCUMENT WAS CREATED BY EATON. IT WAS DISCLOSED IN CONFIDENCE AND IS ONLY TO BE USED FOR THE PURPOSE IN WHICH IT WAS SUPPLIED.		TITLE: Distribution Transformer Outline Drawing DESC: COOPER POWER SERIES THREE-PHASE PAD-MOUNTED COMPARTMENTAL TYPE				
THIS DRAWING HAS BEEN GENERATED FROM A 3D MODEL.	DWG: PTP	DATE: 6/13/2022	REF: P3D V04R02M05	SHEET #: 1 OF 1	SCALE:	REV: 00
F10EFYF3						

ITEM	DESCRIPTION
1	Bolted Cover w/ Handhole w/ Nutguard
2	Cooling Corrugate
3	Current Limiting Backup Fuses (Internal)
4	Ground Nut .50-13 Tap
5	Ground Strap and Nut
6	18.0kV (15.3kV MCOV) Elbow Arrester (boxed)
7	High Security Cabinet w/ 1 Pentahead Door Bolt per door
8	35kV 200 Amp HV Bushing Well w/ 15kV Insert
9	LV Arrester
10	Lifting Lug
11	Liquid Temperature Gauge
12	1.2kV LV Bushing w/ 6 Hole Spade
13	Magnetic Oil Level Gauge
14	Nameplate
15	One Inch Drain Plug
16	One Inch Upper Press. Conn. and Fill Plug
17	Parking Stand
18	Pressure Relief Valve
19	Pressure Vacuum Gauge
20	Schrader Valve
21	Tank Base w/ Jacking and Rolling Facilities
22	5-Position Tap Changer
23	Vacuum Fault Interrupter
24	X0 Bushing

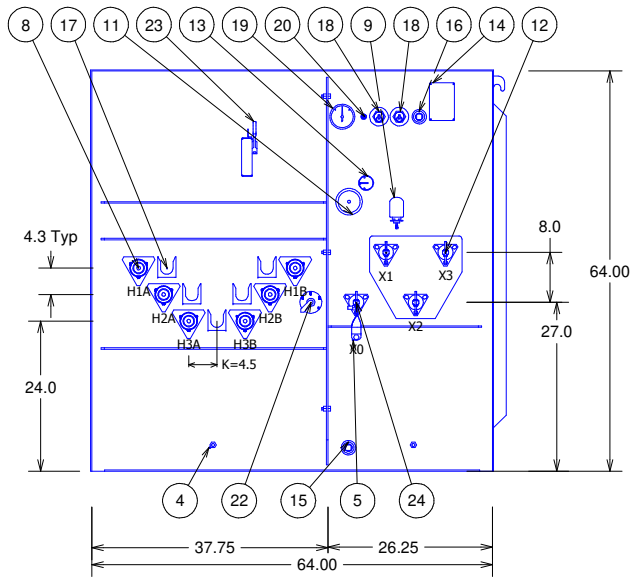
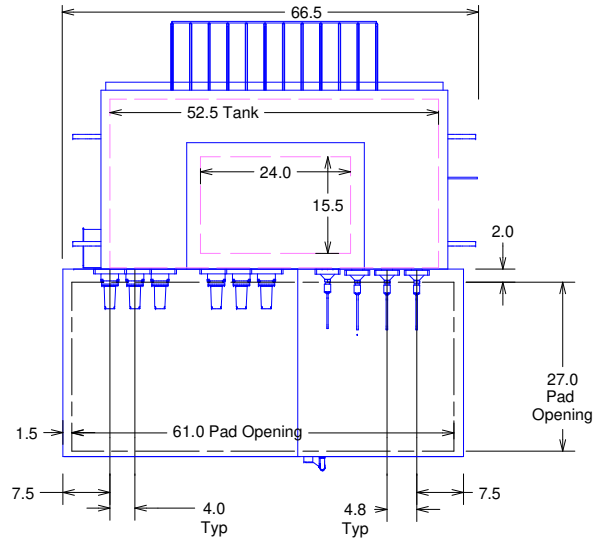
F10EFYKQ
REVISIONS



3PH Padmount Transformer 60Hz
300.0 kVA KNAN 65 AWR FR3
HV 12470D 95 kV BIL
LV 480Y/277 30 kV BIL
5.20 %IZ
Approximate Weight 4370 lbs.
Munsell Green Topcoat
Mild Steel Construction
FM Approved for Outdoor Use
DESIGN #: 1

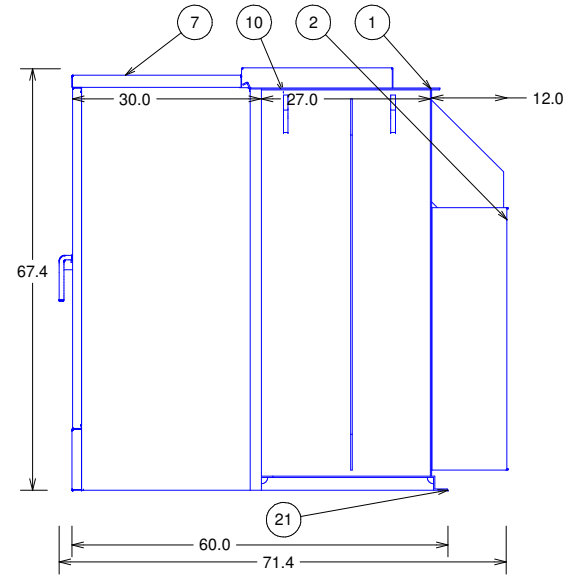
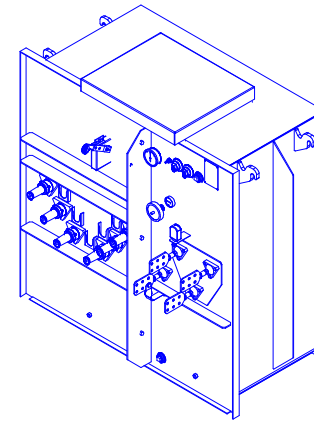
MATERIAL:		 Powering Business Worldwide				
ALL DIMENSIONS ARE IN INCHES [MM]						
THE INFORMATION ON THIS DOCUMENT WAS CREATED BY EATON. IT WAS DISCLOSED IN CONFIDENCE AND IS ONLY TO BE USED FOR THE PURPOSE IN WHICH IT WAS SUPPLIED.		TITLE: Distribution Transformer Outline Drawing DESC: COOPER POWER SERIES THREE-PHASE PAD-MOUNTED COMPARTMENTAL TYPE				
THIS DRAWING HAS BEEN GENERATED FROM A 3D MODEL.	DWG: PTP	DATE: 6/13/2022	REF: P3D V04R02M05	SHEET #: 1 OF 1	SCALE:	REV: 00
F10EFYKQ						

ITEM	DESCRIPTION
1	Bolted Cover w/ Handhole w/ Nutguard
2	Cooling Corrugate
3	Current Limiting Backup Fuses (Internal)
4	Ground Nut .50-13 Tap
5	Ground Strap and Nut
6	18.0kV (15.3kV MCOV) Elbow Arrester (boxed)
7	High Security Cabinet w/ 1 Pentahead Door Bolt per door
8	35kV 200 Amp HV Bushing Well w/ 15kV Insert
9	LV Arrester
10	Lifting Lug
11	Liquid Temperature Gauge
12	1.2kV LV Bushing w/ 6 Hole Spade
13	Magnetic Oil Level Gauge
14	Nameplate
15	One Inch Drain Plug
16	One Inch Upper Press. Conn. and Fill Plug
17	Parking Stand
18	Pressure Relief Valve
19	Pressure Vacuum Gauge
20	Schrader Valve
21	Tank Base w/ Jacking and Rolling Facilities
22	5-Position Tap Changer
23	Vacuum Fault Interrupter
24	X0 Bushing




Cabinet Removed

F10EFYRN
REVISIONS

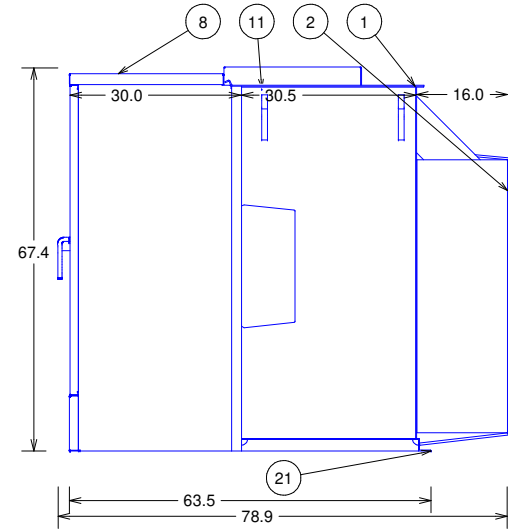
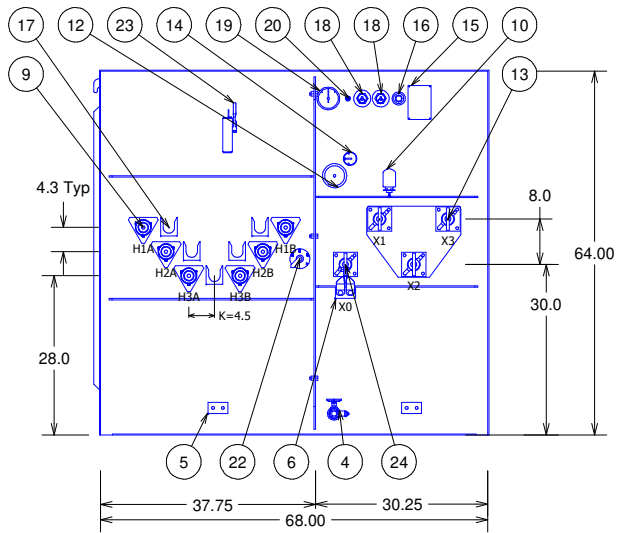
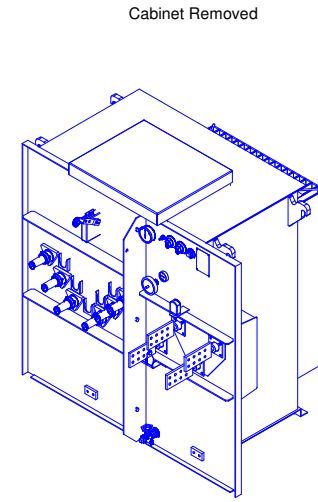
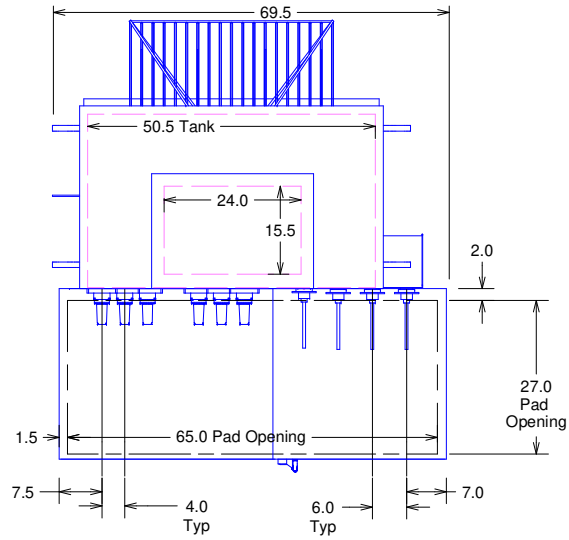


3PH Padmount Transformer 60Hz
500.0 kVA KNAN 65 AWR FR3
HV 12470D 95 kV BIL
LV 480Y/277 30 kV BIL
4.37 %IZ
Approximate Weight 5507 lbs.
Munsell Green Topcoat
Mild Steel Construction
FM Approved for Outdoor Use
DESIGN #: 1


MATERIAL:		 <i>Powering Business Worldwide</i>				
ALL DIMENSIONS ARE IN INCHES [MM]						
THE INFORMATION ON THIS DOCUMENT WAS CREATED BY EATON. IT WAS DISCLOSED IN CONFIDENCE AND IS ONLY TO BE USED FOR THE PURPOSE IN WHICH IT WAS SUPPLIED.		TITLE: Distribution Transformer Outline Drawing DESC: COOPER POWER SERIES THREE-PHASE PAD-MOUNTED COMPARTMENTAL TYPE				
THIS DRAWING HAS BEEN GENERATED FROM A 3D MODEL.	DWG: PTP	DATE: 6/13/2022	REF: P3D V04R02M05	SHEET #: 1 OF 1	SCALE:	REV: 00
F10EFYRN						

ITEM	DESCRIPTION
1	Bolted Cover w/ Handhole w/ Nutguard
2	Cooling Corrugate
3	Current Limiting Backup Fuses (Internal)
4	Drain Valve with Sampler
5	Ground Pad .50-13 Tap
6	Ground Strap and Pad
7	18.0kV (15.3kV MCOV) Elbow Arrester (boxed)
8	High Security Cabinet w/ 1 Pentahead Door Bolt per door
9	35kV 200 Amp HV Bushing Well w/ 15kV Insert
10	LV Arrester
11	Lifting Lug
12	Liquid Temperature Gauge
13	1.2kV LV Bushing w/ 8 Hole Spade
14	Magnetic Oil Level Gauge
15	Nameplate
16	One Inch Upper Press. Conn. and Fill Plug
17	Parking Stand
18	Pressure Relief Valve
19	Pressure Vacuum Gauge
20	Schrader Valve
21	Tank Base w/ Jacking and Rolling Facilities
22	5-Position Tap Changer
23	Vacuum Fault Interrupter
24	X0 Bushing

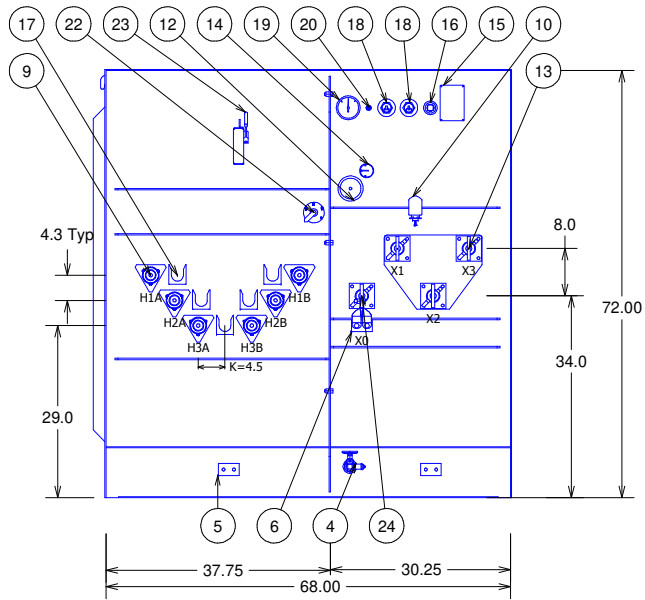
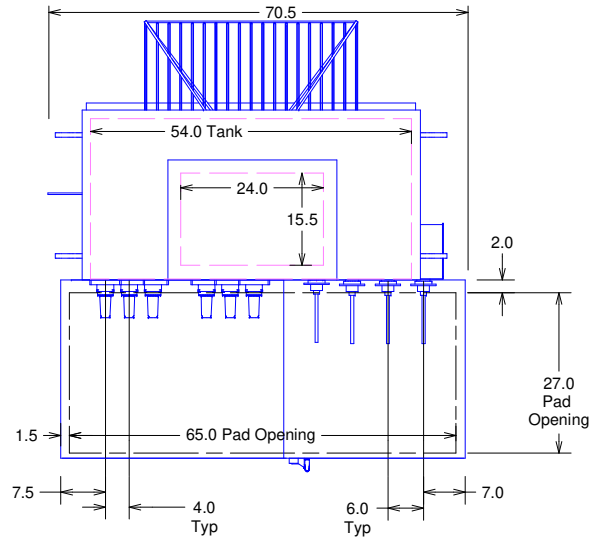
F10EFYZX
REVISIONS



3PH Padmount Transformer 60Hz
750.0 kVA KNAN 65 AWR FR3
HV 12470D 95 kV BIL
LV 480Y/277 30 kV BIL
5.73 %IZ
Approximate Weight 6796 lbs.
Munsell Green Topcoat
Mild Steel Construction
FM Approved for Outdoor Use
DESIGN #: 1

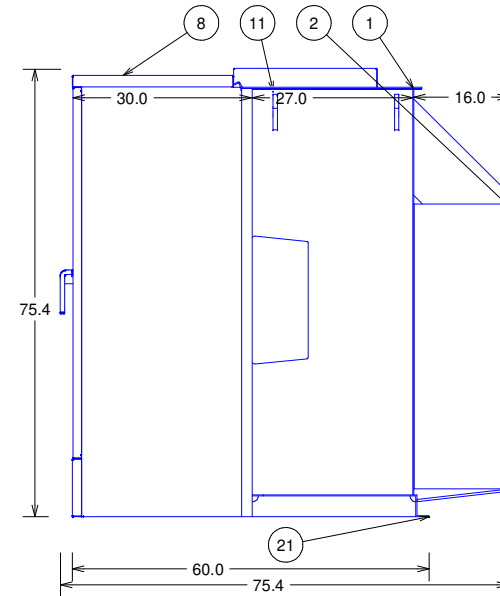
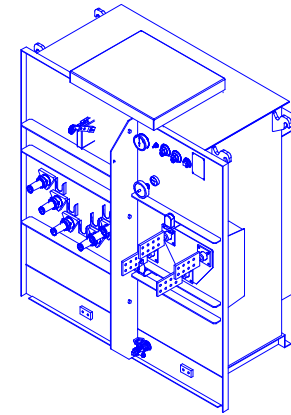
MATERIAL:		 Powering Business Worldwide	
ALL DIMENSIONS ARE IN INCHES [MM]			
THE INFORMATION ON THIS DOCUMENT WAS CREATED BY EATON. IT WAS DISCLOSED IN CONFIDENCE AND IS ONLY TO BE USED FOR THE PURPOSE IN WHICH IT WAS SUPPLIED.		TITLE: Distribution Transformer Outline Drawing	
		DESC: COOPER POWER SERIES THREE-PHASE PAD-MOUNTED COMPARTMENTAL TYPE	
DWG: PTP	DATE: 6/13/2022	REF: P3D V04R02M05	SHEET #: 1 OF 1
THIS DRAWING HAS BEEN GENERATED FROM A 3D MODEL.		SCALE: 1	REV: 00
F10EFYZX			

ITEM	DESCRIPTION
1	Bolted Cover w/ Handhole w/ Nutguard
2	Cooling Corrugate
3	Current Limiting Backup Fuses (Internal)
4	Drain Valve with Sampler
5	Ground Pad .50-13 Tap
6	Ground Strap and Pad
7	18.0kV (15.3kV MCOV) Elbow Arrester (boxed)
8	High Security Cabinet w/ 1 Pentahead Door Bolt per door
9	35kV 200 Amp HV Bushing Well w/ 15kV Insert
10	LV Arrester
11	Lifting Lug
12	Liquid Temperature Gauge
13	1.2kV LV Bushing w/ 8 Hole Spade
14	Magnetic Oil Level Gauge
15	Nameplate
16	One Inch Upper Press. Conn. and Fill Plug
17	Parking Stand
18	Pressure Relief Valve
19	Pressure Vacuum Gauge
20	Schrader Valve
21	Tank Base w/ Jacking and Rolling Facilities
22	5-Position Tap Changer
23	Vacuum Fault Interrupter
24	X0 Bushing




Cabinet Removed

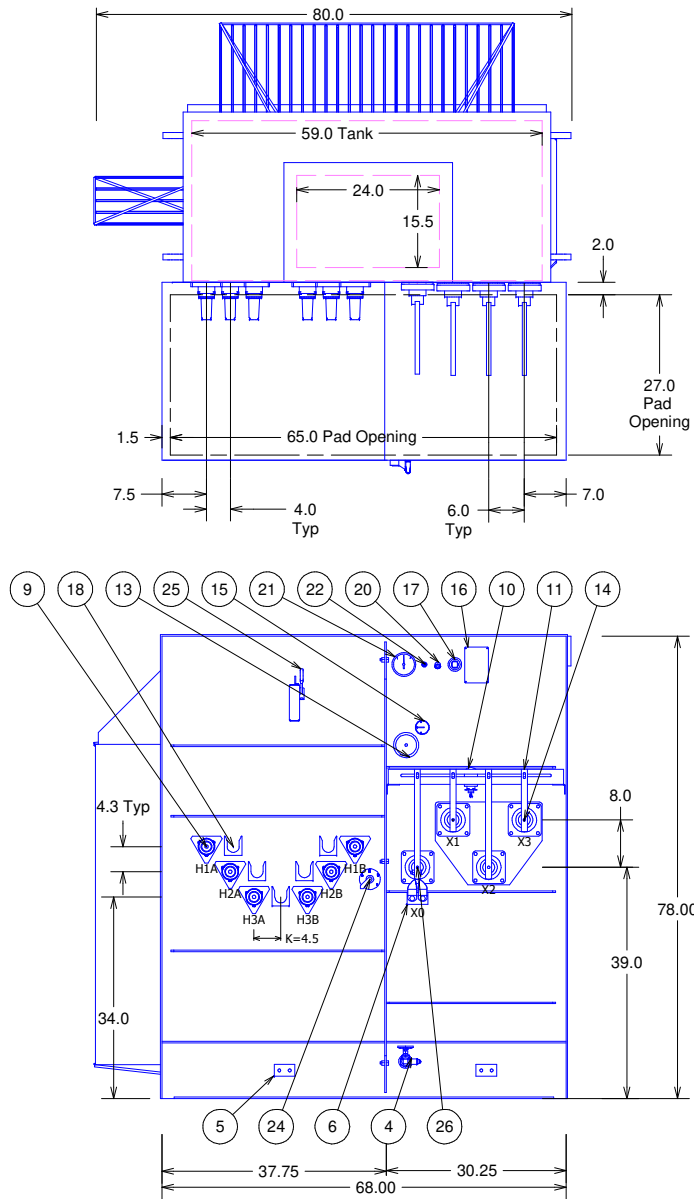
F10EFZ2D
REVISIONS



3PH Padmount Transformer 60Hz
1000.0 kVA KNAN 65 AWR FR3
HV 12470D 95 kV BIL
LV 480Y/277 30 kV BIL
5.72 %IZ
Approximate Weight 7898 lbs.
Munsell Green Topcoat
Mild Steel Construction
FM Approved for Outdoor Use
DESIGN #: 1

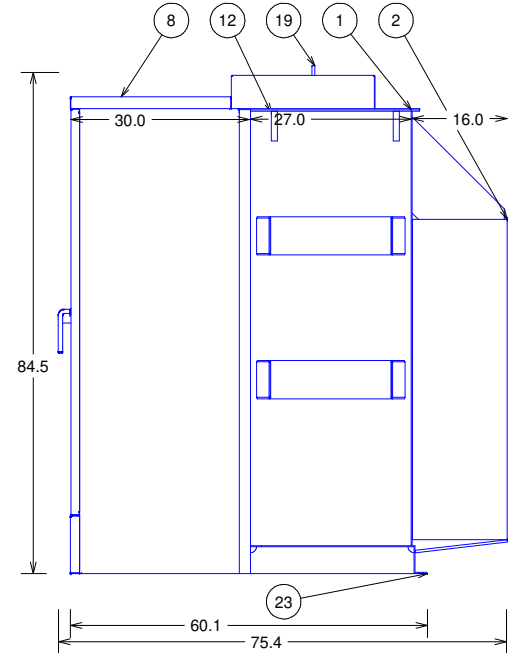
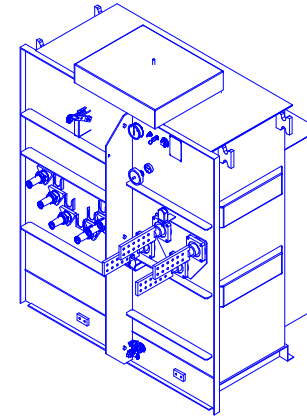
MATERIAL:		 Powering Business Worldwide				
ALL DIMENSIONS ARE IN INCHES [MM]						
THE INFORMATION ON THIS DOCUMENT WAS CREATED BY EATON. IT WAS DISCLOSED IN CONFIDENCE AND IS ONLY TO BE USED FOR THE PURPOSE IN WHICH IT WAS SUPPLIED.		TITLE: Distribution Transformer Outline Drawing DESC: COOPER POWER SERIES THREE-PHASE PAD-MOUNTED COMPARTMENTAL TYPE				
THIS DRAWING HAS BEEN GENERATED FROM A 3D MODEL.	DWG: PTP	DATE: 6/13/2022	REF: P3D V04R02M05	SHEET #: 1 OF 1	SCALE:	REV: 00
F10EFZ2D						

ITEM	DESCRIPTION
1	Welded Cover w/ Handhole
2	Cooling Corrugate
3	Current Limiting Backup Fuses (Internal)
4	Drain Valve with Sampler
5	Ground Pad .50-13 Tap
6	Ground Strap and Pad
7	18.0kV (15.3kV MCOV) Elbow Arrester (boxed)
8	High Security Cabinet w/ 1 Pentahead Door Bolt per door
9	35kV 200 Amp HV Bushing Well w/ 15kV Insert
10	LV Arrester
11	LV Bushing Support
12	Lifting Lug
13	Liquid Temperature Gauge
14	1.2kV LV Bushing w/12 Hole Spade Supported
15	Magnetic Oil Level Gauge
16	Nameplate
17	One Inch Upper Press. Conn. and Fill Plug
18	Parking Stand
19	Pressure Relief Device
20	Pressure Relief Valve
21	Pressure Vacuum Gauge
22	Schrader Valve
23	Tank Base w/ Jacking and Rolling Facilities
24	5-Position Tap Changer
25	Vacuum Fault Interrupter
26	X0 Bushing




Cabinet Removed

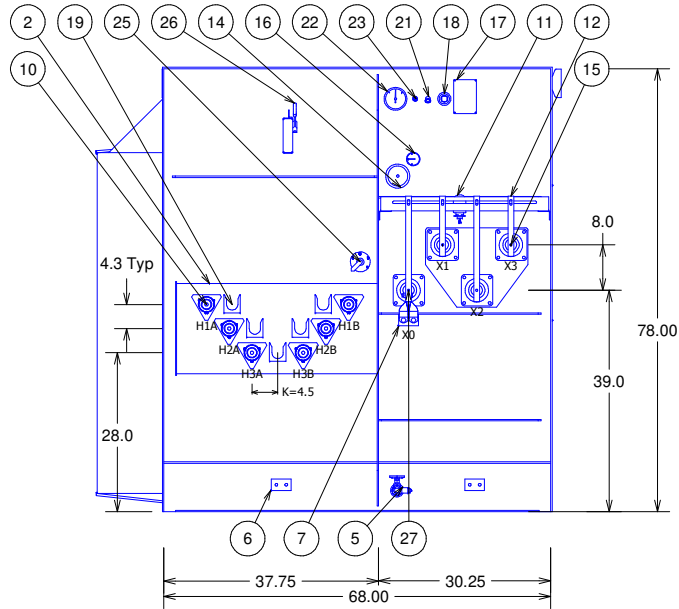
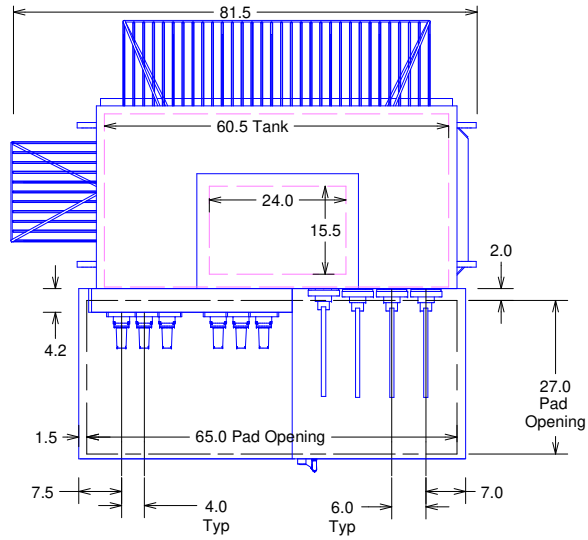
F10EFZ50
REVISIONS



3PH Padmount Transformer 60Hz
1500.0 kVA KNAN 65 AWR FR3
HV 12470D 95 kV BIL
LV 480Y/277 30 kV BIL
5.72 %IZ
Approximate Weight 9950 lbs.
Munsell Green Topcoat
Mild Steel Construction
FM Approved for Outdoor Use
DESIGN #: 1

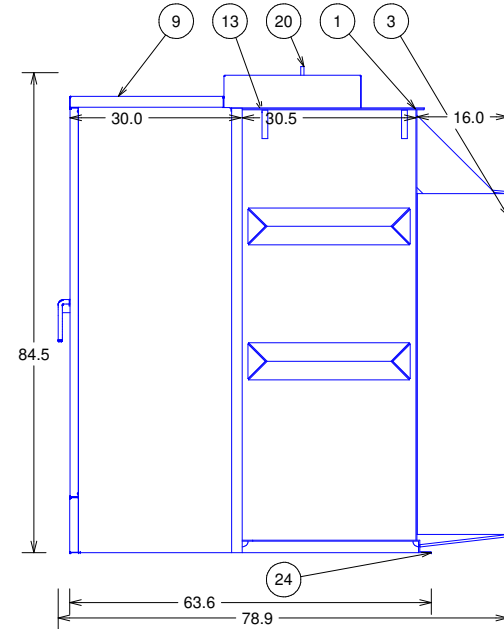
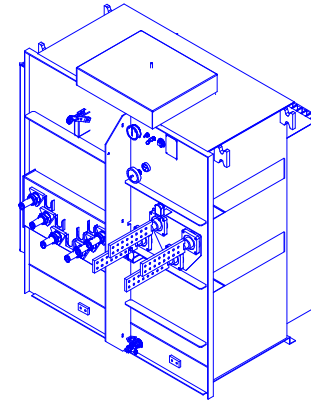
MATERIAL:		 Powering Business Worldwide				
ALL DIMENSIONS ARE IN INCHES [MM]						
THE INFORMATION ON THIS DOCUMENT WAS CREATED BY EATON. IT WAS DISCLOSED IN CONFIDENCE AND IS ONLY TO BE USED FOR THE PURPOSE IN WHICH IT WAS SUPPLIED.		TITLE: Distribution Transformer Outline Drawing DESC: COOPER POWER SERIES THREE-PHASE PAD-MOUNTED COMPARTMENTAL TYPE				
THIS DRAWING HAS BEEN GENERATED FROM A 3D MODEL.	DWG: PTP	DATE: 6/13/2022	REF: P3D V04R02M05	SHEET #: 1 OF 1	SCALE:	REV: 00
F10EFZ50						

ITEM	DESCRIPTION
1	Welded Cover w/ Handhole
2	Bushing Box
3	Cooling Corrugate
4	Current Limiting Backup Fuses (Internal)
5	Drain Valve with Sampler
6	Ground Pad .50-13 Tap
7	Ground Strap and Pad
8	18.0kV (15.3kV MCOV) Elbow Arrester (boxed)
9	High Security Cabinet w/ Pentahead Door Bolts
10	35kV 200 Amp HV Bushing Well w/ 15kV Insert
11	LV Arrester
12	LV Bushing Support
13	Lifting Lug
14	Liquid Temperature Gauge
15	1.2kV LV Bushing w/16 Hole Spade Supported
16	Magnetic Oil Level Gauge
17	Nameplate
18	One Inch Upper Press. Conn. and Fill Plug
19	Parking Stand
20	Pressure Relief Device
21	Pressure Relief Valve
22	Pressure Vacuum Gauge
23	Schrader Valve
24	Tank Base w/ Jacking and Rolling Facilities
25	5-Position Tap Changer
26	Vacuum Fault Interrupter
27	X0 Bushing




Cabinet Removed

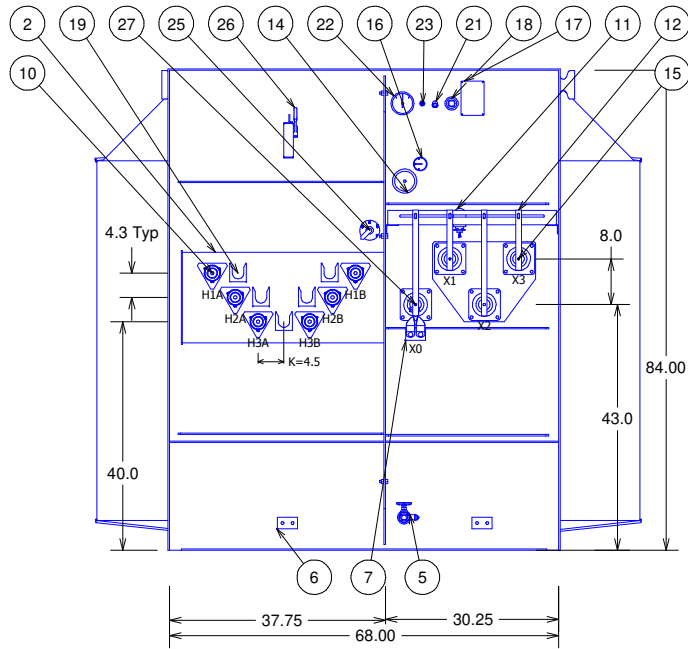
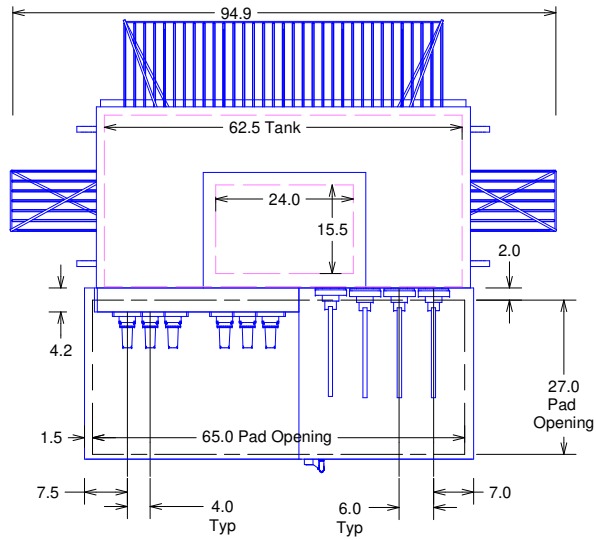
D10KQY7B
REVISIONS



3PH Padmount Transformer 60Hz
2000.0 kVA KNAN 65 AWR FR3
HV 12470D 95 kV BIL
LV 480Y/277 30 kV BIL
5.75 %IZ
Approximate Weight 12666 lbs.
Munsell Green Topcoat
Mild Steel Construction
FM Approved for Outdoor Use
DESIGN #: 1

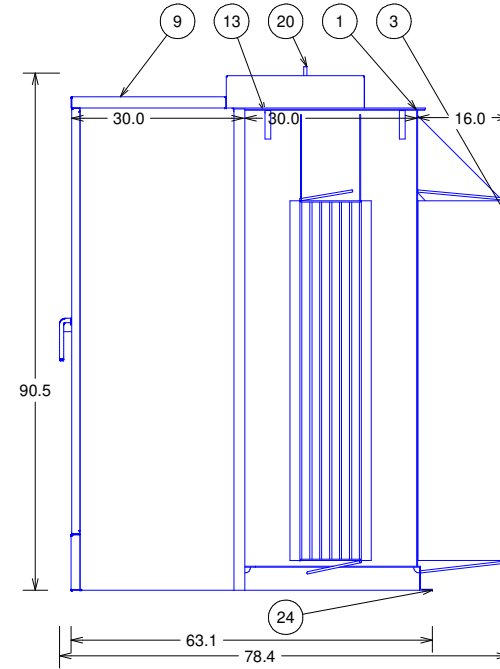
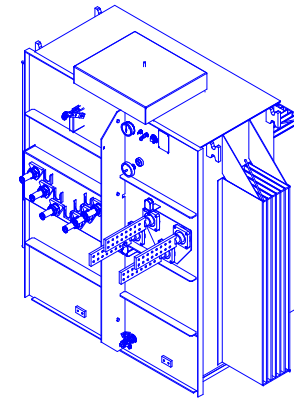
MATERIAL:		 Powering Business Worldwide	
ALL DIMENSIONS ARE IN INCHES [MM]			
THE INFORMATION ON THIS DOCUMENT WAS CREATED BY EATON. IT WAS DISCLOSED IN CONFIDENCE AND IS ONLY TO BE USED FOR THE PURPOSE IN WHICH IT WAS SUPPLIED.		TITLE: Distribution Transformer Outline Drawing	
THIS DRAWING HAS BEEN GENERATED FROM A 3D MODEL.		DESC: COOPER POWER SERIES THREE-PHASE PAD-MOUNTED COMPARTMENTAL TYPE	
DWG: PTP	DATE: 8/18/2021	REF: P3D V04R01M06	SHEET #: 1 OF 1
			SCALE: 00
D10KQY7B			

ITEM	DESCRIPTION
1	Welded Cover w/ Handhole
2	Bushing Box
3	Cooling Corrugate
4	Current Limiting Backup Fuses (Internal)
5	Drain Valve with Sampler
6	Ground Pad .50-13 Tap
7	Ground Strap and Pad
8	18.0kV (15.3kV MCOV) Elbow Arrester (boxed)
9	High Security Cabinet w/ 1 Pentahead Door Bolt per door
10	35kV 200 Amp HV Bushing Well w/ 15kV Insert
11	LV Arrester
12	LV Bushing Support
13	Lifting Lug
14	Liquid Temperature Gauge
15	1.2kV LV Bushing w/16 Hole Spade Supported
16	Magnetic Oil Level Gauge
17	Nameplate
18	One Inch Upper Press. Conn. and Fill Plug
19	Parking Stand
20	Pressure Relief Device
21	Pressure Relief Valve
22	Pressure Vacuum Gauge
23	Schrader Valve
24	Tank Base w/ Jacking and Rolling Facilities
25	5-Position Tap Changer
26	Vacuum Fault Interrupter
27	X0 Bushing




Cabinet Removed

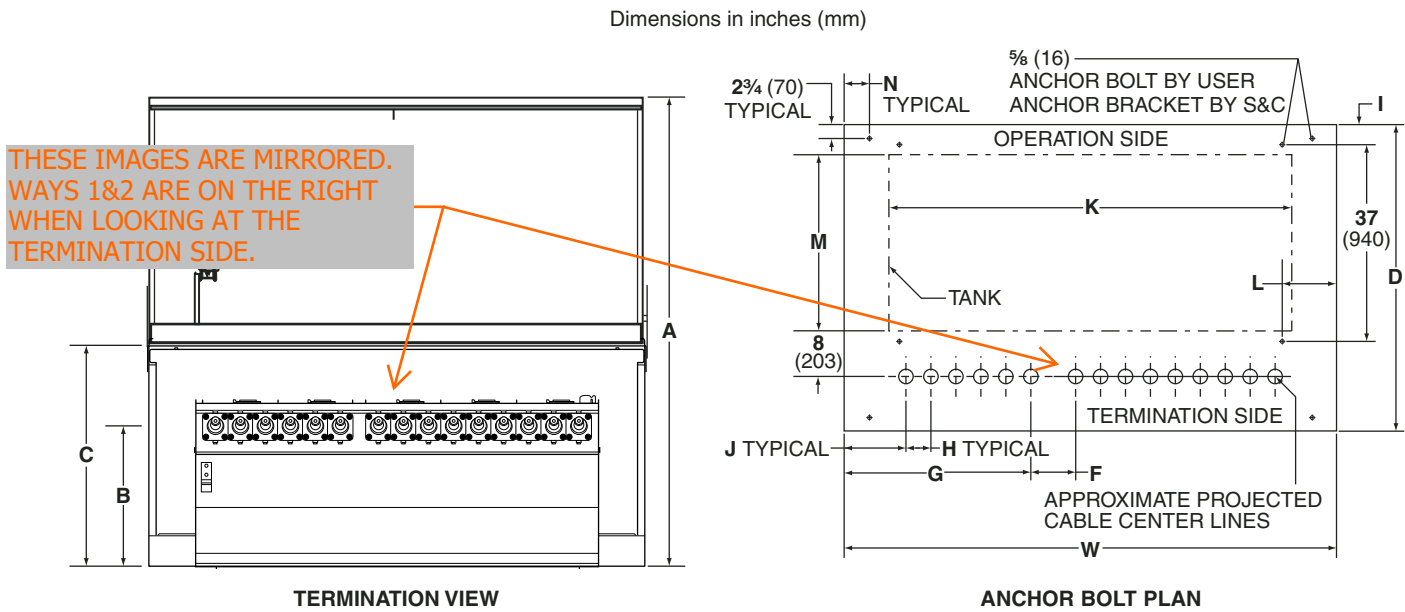
F10EFZ7B
REVISIONS



3PH Padmount Transformer 60Hz
2500.0 kVA KNAN 65 AWR FR3
HV 12470D 95 kV BIL
LV 480Y/277 30 kV BIL
5.75 %IZ
Approximate Weight 14452 lbs.
Munsell Green Topcoat
Mild Steel Construction
FM Approved for Outdoor Use
DESIGN #: 1

MATERIAL:		 Powering Business Worldwide	
ALL DIMENSIONS ARE IN INCHES [MM]			
THE INFORMATION ON THIS DOCUMENT WAS CREATED BY EATON. IT WAS DISCLOSED IN CONFIDENCE AND IS ONLY TO BE USED FOR THE PURPOSE IN WHICH IT WAS SUPPLIED.		TITLE: Distribution Transformer Outline Drawing	
THIS DRAWING HAS BEEN GENERATED FROM A 3D MODEL.		DESC: COOPER POWER SERIES THREE-PHASE PAD-MOUNTED COMPARTMENTAL TYPE	
DWG: PTP	DATE: 6/13/2022	REF: P3D V04R02M05	SHEET #: 1 OF 1
		SCALE:	REV: 00
F10EFZ7B			

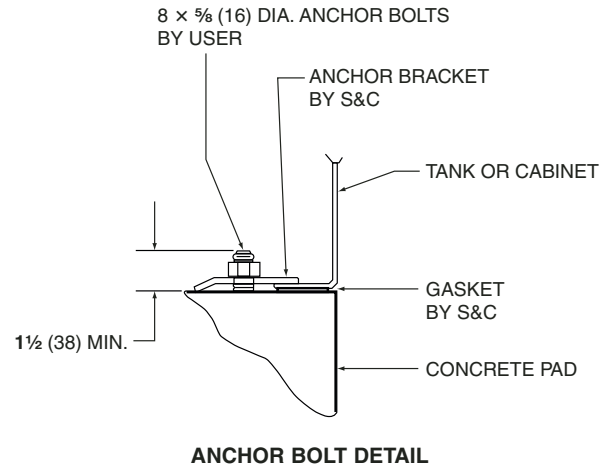
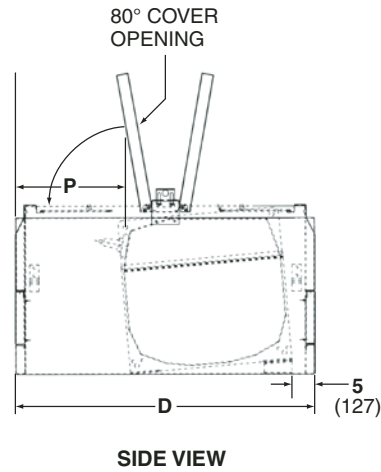
Pad-Mounted Style Switchgear—Models 514, 523, 624, and 633*
 (Model 523, 29 kV, 12.5 kA symmetrical shown)



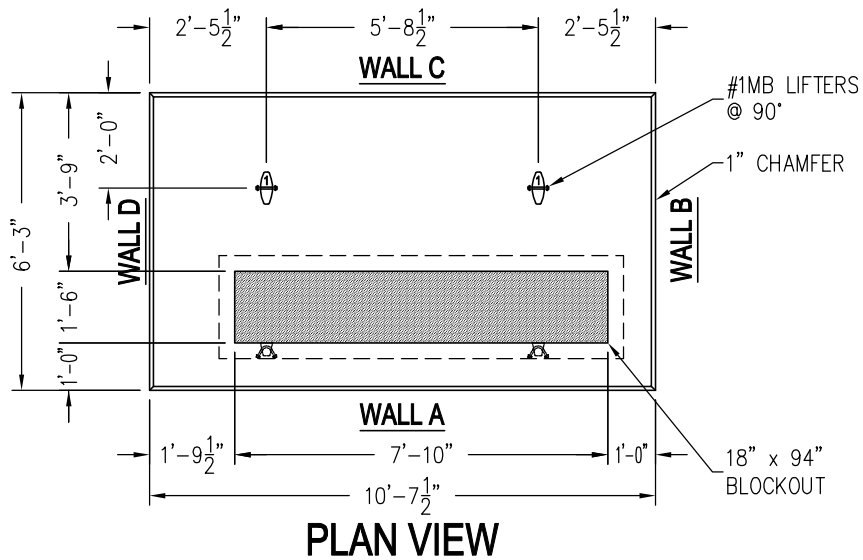
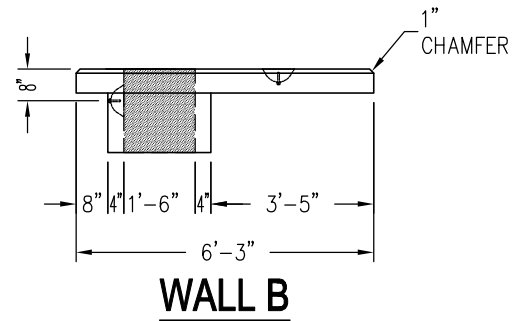
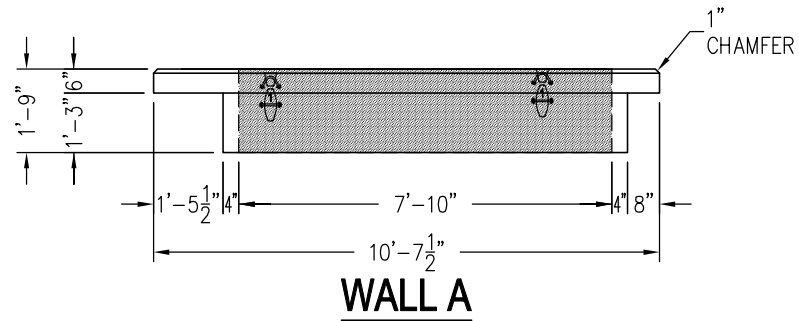
Model	Ratings		A	B	C	D	F [▲]	G [▲]	H
	kV, Max	Short-Circuit, A, RMS, Sym.							
514 523	15.5	12 500	55 (1397)	17½ (445)	29½ (749)	61 (1549)	7⅞ (194)	39⅞ (1008)	5 (127)
		25 000	65 (1651)	28 (711)	38 (965)	65 (1651)	7⅞ (194)	39⅞ (1008)	5 (127)
	29	12 500	65 (1651)	28 (711)	38 (965)	65 (1651)	7⅞ (194)	39⅞ (1008)	5 (127)
		25 000	65 (1651)	28 (711)	38 (965)	65 (1651)	NA	NA	5¾ (146)
	38	12 500	65 (1651)	28 (711)	38 (965)	65 (1651)	NA	NA	5¾ (146)
		25 000	65 (1651)	28 (711)	38 (965)	65 (1651)	NA	NA	5¾ (146)
624 633	15.5	12 500	55 (1397)	17½ (445)	29½ (749)	61 (1549)	7⅞ (194)	47⅞ (1199)	5 (127)
		25 000	65 (1651)	28 (711)	38 (965)	65 (1651)	7⅞ (194)	47⅞ (1199)	5 (127)
	29	12 500	65 (1651)	28 (711)	38 (965)	65 (1651)	7⅞ (194)	47⅞ (1199)	5 (127)
		25 000	65 (1651)	28 (711)	38 (965)	65 (1651)	NA	NA	5¾ (146)
	38	12 500	65 (1651)	28 (711)	38 (965)	65 (1651)	NA	NA	5¾ (146)
		25 000	65 (1651)	28 (711)	38 (965)	65 (1651)	NA	NA	5¾ (146)

▲ All four-, five, and six-way units rated 15.5 kV or 29 kV, 12.5 kA symmetrical include an extra 2⅝-inch (67-mm) gap between Ways Two and Three (four-way units) or between Ways Three and Four (five- and six-way units).

★ See pages 16 and 17 for Models 201, 210, 211, 320, 321, 330, 413, 422, 431, and 440.



Model	Ratings		I	J	K	L	M	N	P	W
	kV, Max	Short-Circuit, A, RMS, Sym.								
514 523	15.5	12 500	3 (76)	14 ¹¹ / ₁₆ (373)	80 ⁷ / ₁₆ (2043)	14 ⁷ / ₈ (377)	32 ³ / ₁₆ (818)	7 ¹ / ₂ (191)	23 ¹³ / ₁₆ (605)	102 (2591)
		25 000	4 (102)	14 ¹¹ / ₁₆ (373)	80 ⁷ / ₁₆ (2043)	12 ¹ / ₈ (308)	35 (889)	7 ¹ / ₂ (191)	23 ¹ / ₂ (597)	102 (2591)
	29	12 500	4 (102)	14 ¹¹ / ₁₆ (373)	80 ⁷ / ₁₆ (2043)	12 ¹ / ₈ (308)	35 (889)	7 ¹ / ₂ (191)	23 ¹ / ₂ (597)	102 (2591)
		25 000	4 (102)	16 ¹ / ₄ (413)	90 ¹ / ₁₆ (2288)	12 ⁷ / ₈ (327)	35 (889)	7 ¹ / ₂ (191)	23 ¹ / ₂ (597)	113 (2870)
	38	12 500	4 (102)	16 ¹ / ₄ (413)	90 ¹ / ₁₆ (2288)	12 ⁷ / ₈ (327)	35 (889)	7 ¹ / ₂ (191)	23 ¹ / ₂ (597)	113 (2870)
		25 000	4 (102)	16 ¹ / ₄ (413)	90 ¹ / ₁₆ (2288)	12 ⁷ / ₈ (327)	35 (889)	7 ¹ / ₂ (191)	23 ¹ / ₂ (597)	113 (2870)
624 633	15.5	12 500	3 (76)	7 ³ / ₁₆ (183)	95 ⁷ / ₁₆ (2424)	7 ³ / ₈ (187)	32 ³ / ₁₆ (818)	10 ¹ / ₂ (267)	23 ¹³ / ₁₆ (605)	102 (2591)
		25 000	4 (102)	7 ³ / ₁₆ (183)	95 ⁷ / ₁₆ (2424)	4 ⁵ / ₈ (117)	35 (889)	7 ¹ / ₂ (191)	23 ¹ / ₂ (597)	102 (2591)
	29	12 500	4 (102)	7 ³ / ₁₆ (183)	95 ⁷ / ₁₆ (2424)	4 ⁵ / ₈ (117)	35 (889)	7 ¹ / ₂ (191)	23 ¹ / ₂ (597)	102 (2591)
		25 000	4 (102)	7 ⁵ / ₈ (194)	107 ⁵ / ₁₆ (2726)	4 ¹ / ₄ (107)	35 (889)	7 ¹ / ₂ (191)	23 ¹ / ₂ (597)	113 (2870)
	38	12 500	4 (102)	7 ⁵ / ₈ (194)	107 ⁵ / ₁₆ (2726)	4 ¹ / ₄ (107)	35 (889)	7 ¹ / ₂ (191)	23 ¹ / ₂ (597)	113 (2870)
		25 000	4 (102)	7 ⁵ / ₈ (194)	107 ⁵ / ₁₆ (2726)	4 ¹ / ₄ (107)	35 (889)	7 ¹ / ₂ (191)	23 ¹ / ₂ (597)	113 (2870)



DESIGN NOTES

- 1) ALL CONCRETE TO HAVE 28 DAY COMPRESSIVE STRENGTH OF 6,000 PSI
- 2) CEMENT: TYPE I/II/III
- 3) STEEL REINFORCEMENT: REBAR, ASTM A-615 GRADE 60
- 4) DESIGN LOADINGS:
 - A. ASSUME 2,000 LBS. EQUIPMENT LOAD
 - B. SOIL WEIGHT WET: 120 Pcf.
 - C. EQUIVALENT SOIL FLUID PRESSURE: DRY SOIL = 40 Pcf. SATURATED SOIL = 80 Pcf.
 - D. LATERAL LIVE LOAD SURCHARGE (FROM GRADE TO 8.0 FT.): 80 Psf.
 - E. SOIL COVER: MIN. = 0 FT. MAX. = 0 FT.
 - F. ASSUMED WATER TABLE AT DEPTH OF: 3 FT.

BILL OF MATERIALS

QTY	DESCRIPTION/TYPE
4	#1 MB LIFTERS @ 90°
-	-
-	-
-	-
-	-
-	-
-	-
-	-
-	-
-	-
-	-
-	-
-	-
-	-
-	-
-	-

PRODUCT WEIGHTS/YD.³

ROOF SLAB	-#	-yd ³
TOP	-#	-yd ³
EXTENSION1	-#	-yd ³
EXTENSION2	-#	-yd ³
BOTTOM	-#	-yd ³
FLOOR SLAB	-#	-yd ³
TOTALS:	5,331#	1.316yd ³

25 KV DF DEAD FRONT SWITCHGEAR PAD
 6'-3" x 10'-7 1/2" x 0'-6"
 OSU S&C VISTA 624 5-6 WAY
 STANDARD

CONTROL# C.N.	PROJECT# P.N.
DRAWN BY: SR	ORDER# S.N.
DATE: 10/01/16	SOLD BY: S.P.
REVISIONS: -	SCALE: 1/4" = 1'
CHECKED BY:	DATE:
DWG NAME: -	PAGE 1 OF 2

THIS DOCUMENT IS THE PROPERTY OF OLDCASTLE PRECAST, INC. IT IS CONFIDENTIAL, SUBMITTED FOR REFERENCE PURPOSES ONLY, AND SHALL NOT BE USED IN ANY WAY INJURIOUS TO THE INTEREST OF, OR WITHOUT THE COPYRIGHT © 2012 OLDCASTLE PRECAST, INC. ALL RIGHTS RESERVED



1100 HERITAGE PKWY. MANSFIELD, TX 76063
 PHONE: (817) 453-1054 FAX: (817) 453-4007

ITEM SPECIAL