



OSU Energy Management Program

FY2016 Report

September 2016

Summary of System-wide Cost Avoidance for FY2016.
Includes Update for FY2016 Q4 and Program Goals.



FY16 Program Successes

- The Energy Management Program for the OSU System was recognized by Sustainable Tulsa as its 2016 Henry Bellmon Sustainable Economic Growth award winner.

OSU Tulsa

- An adjunct faculty member changed her class format to accommodate the HVAC shut down of an entire wing of a building, thereby directly reducing energy consumption.
- This is an excellent example of the culture of conservation at OSU-Tulsa and CHS.

OSUIT - Okmulgee

- Stan Teague was recognized by PSO as the Energy Manager of the Year for Oklahoma.
- Because of OSU-IT's success in PSO's Peak Performers program, it was awarded a rebate of just over \$15,000.
- The OSU-IT campus also reached \$1M in savings in FY2016.

OSU Stillwater

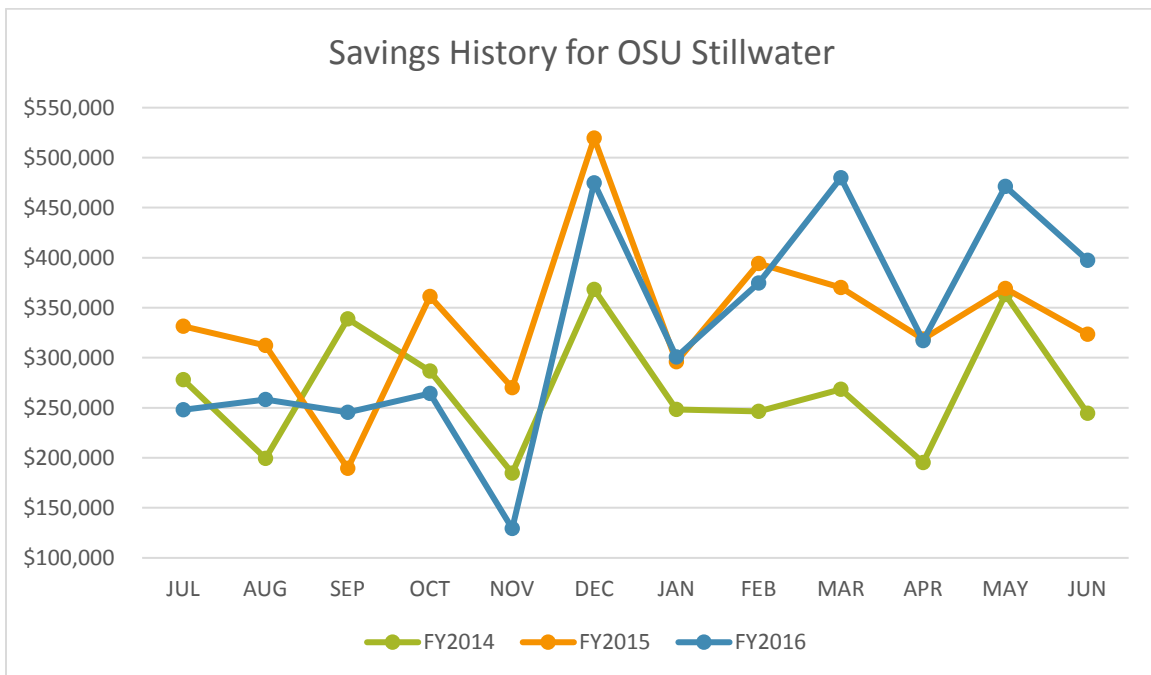
- For FY2016, Stillwater increased its monthly savings goal from \$267K per month to \$300K per month. This new savings goal was exceeded 7 consecutive months with a peak of nearly \$480,000 in March 2016.
- Renewed focus in working with Athletics has helped increase monthly savings. This has been a large part of the monthly savings goal success.

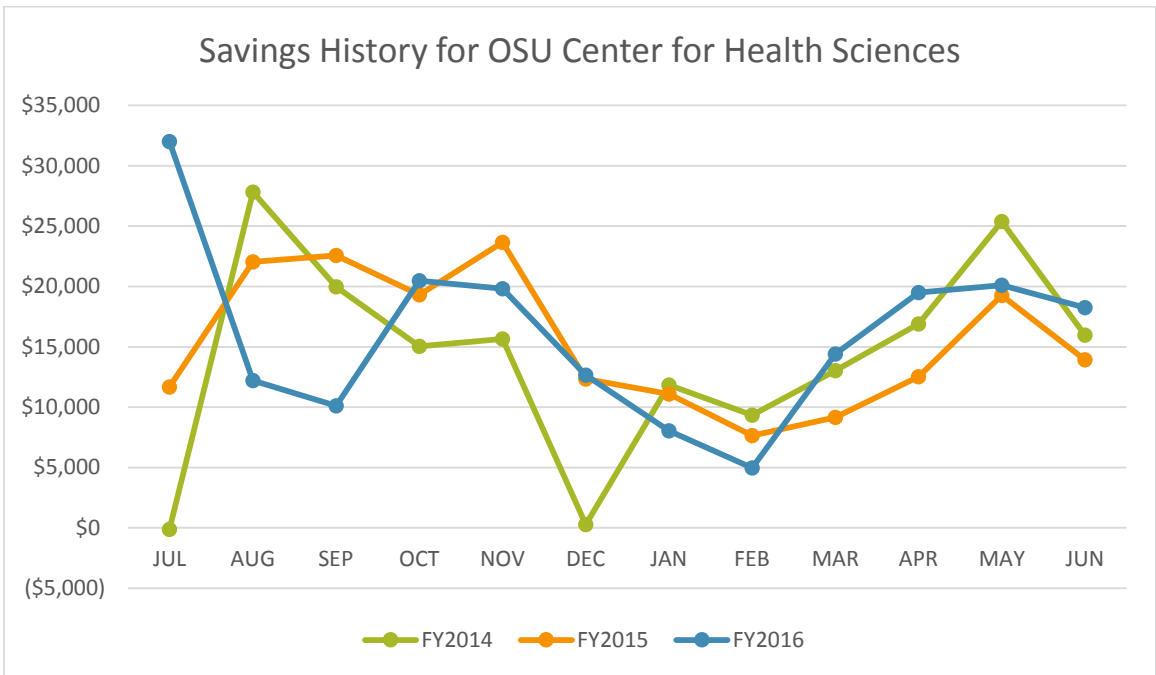
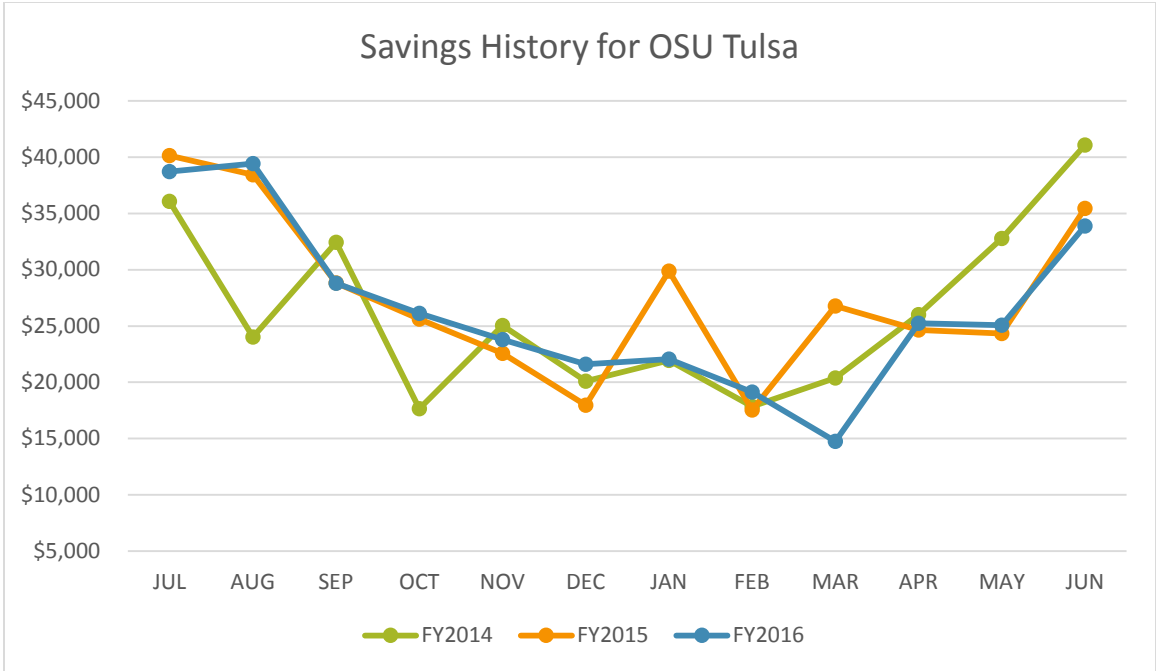
Program Savings and Progress for Fiscal Year 2016

System-wide Savings (July 2015 – June 2016)		
OSU – Stillwater	\$3,961,367	14.5%
OSU – Oklahoma City	\$242,357	25.9%
OSU – Tulsa Campus	\$318,664	28.4%
OSU Tulsa – Center for Health Sciences	\$192,572	18.1%
OSU IT – Okmulgee	\$272,502	23.9%
Total Savings (12 months)	\$4,987,462	15.8%
Percent Savings Based on CY 2006 Baseline		

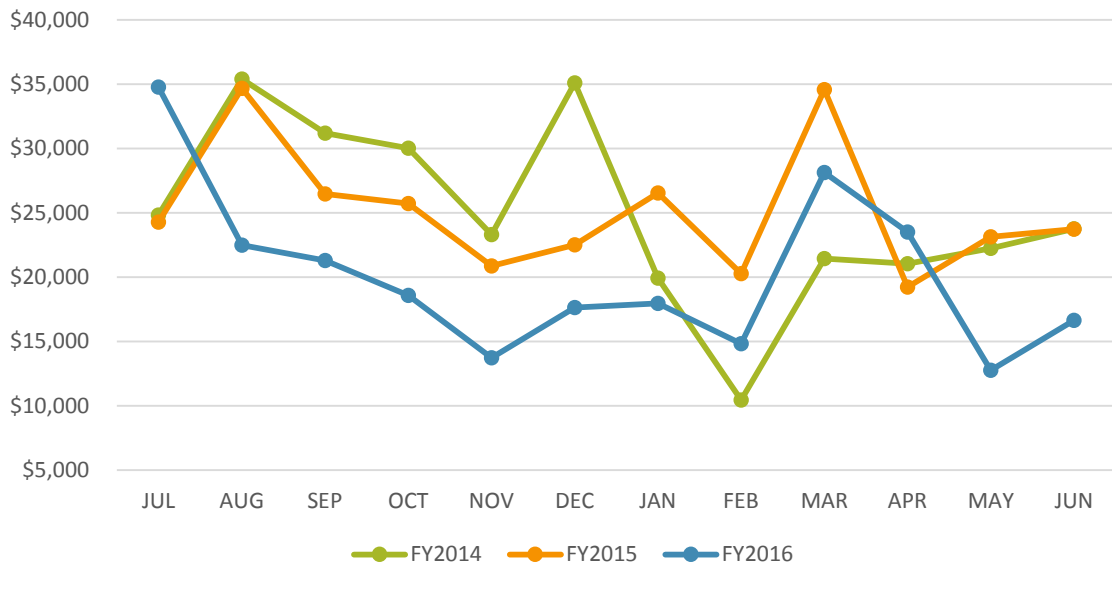
System-wide Savings (July 2007 – June 2016)		
OSU – Stillwater	\$30,702,276	15.2%
OSU – Oklahoma City	\$2,080,752	25.5%
OSU – Tulsa Campus	\$2,286,361	24.2%
OSU Tulsa – Center for Health Sciences	\$1,884,780	25.8%
OSU IT – Okmulgee	\$1,629,394	15.5%
Total Savings (Program To-Date)	\$38,583,563	16.3%

Program Savings and Progress Last 12 Months

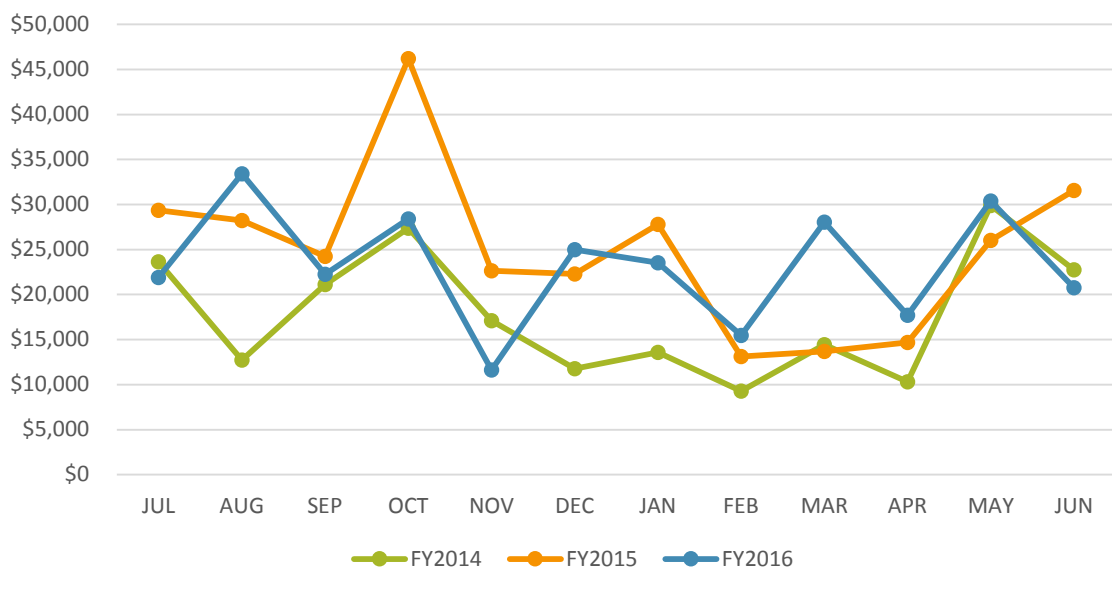




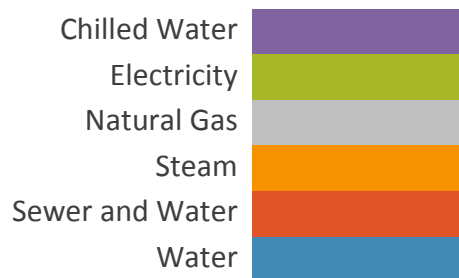
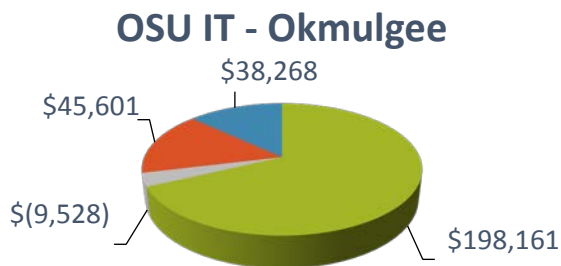
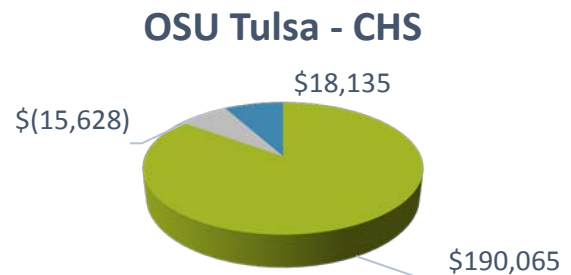
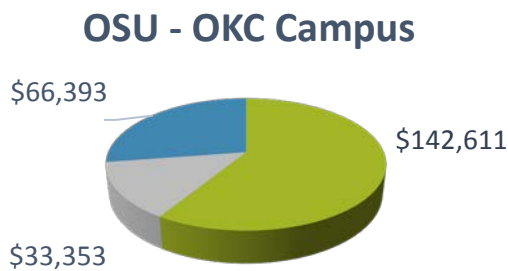
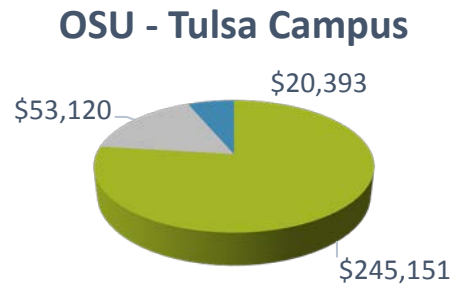
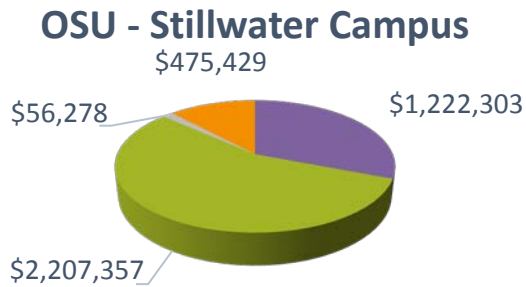
Savings History for OSU Oklahoma City



Savings History for OSU Okmulgee

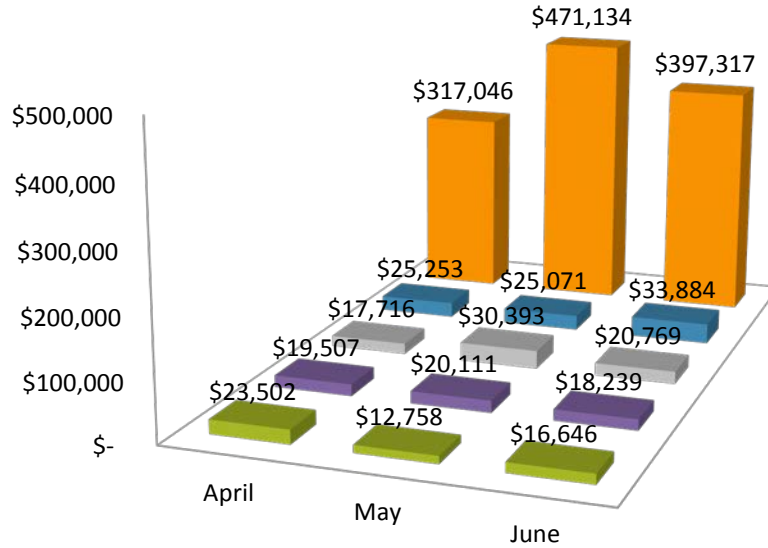


Program Savings by Campus and Commodity for FY2016

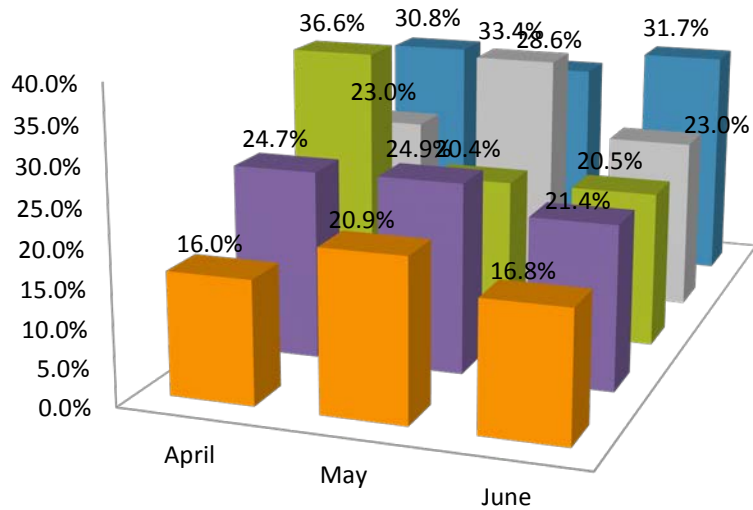


FY2016 Q4 Cost Avoidance

Savings Dollars and Percent Cost Avoidance



■ Oklahoma City
 ■ Tulsa - CHS
 ■ Okmulgee
 ■ Tulsa Campus
 ■ Stillwater



■ Stillwater
 ■ Tulsa - CHS
 ■ Oklahoma City
 ■ Okmulgee
 ■ Tulsa Campus

Program Savings and Progress Last 12 Months OSU Stillwater Campus Only

