

2023 STRATEGIC ALIGNMENT REPORT



FACILITIES
MANAGEMENT

Behind the scenes of
Oklahoma State University

is **FACILITIES
MANAGEMENT**



supporting the mission
in the classrooms and
across the grounds.

The strategic vision for Oklahoma State University provides the framework in which individual components of the OSU system will align to drive success and impact communities.

Through teaching, research and Extension, land-grant institutions steward a noble responsibility. We are called to make a difference in the world — to raise generations of servant-leaders who engage as vital members of their communities.

In October 2022, Oklahoma State University unveiled a strategy to become the preeminent land-grant university. This bold plan has audacious goals to increase the number of qualified graduates entering the workforce, to equip them for success beyond graduation and to drastically reduce the number graduating with debt through scholarships. It also lays out a plan to focus resources at the intersection of the university's research strengths with society's emerging needs.

IMPERATIVE 1

Enroll a minimum of 5,000 new first-year students by the fall of 2026 at the Stillwater campus.

IMPERATIVE 2

Increase six-year graduation rate 10% by 2027 through a comprehensive retention strategy.

IMPERATIVE 3

Compete with integrity and excellence.

IMPERATIVE 4

Oklahoma State University commits to creating graduates who exhibit the four competencies of

- 1) Professional Preparedness,*
- 2) Engaged Citizenship,*
- 3) Ethical Leadership and*
- 4) Personal Responsibility.*

IMPERATIVE 5

Align curriculum and programming to support the generation of Ideal Graduates and to advance the Land-Grant mission.

IMPERATIVE 6

Leverage R1 status to advance research that impacts society.

IMPERATIVE 7

Elevate and amplify Extension.

IMPERATIVE 8

Create an effective and efficient OSU system.

Keeping campus updated requires multiple departments, hundreds of employees, a quality working relationship with all areas of campus and detailed planning to mitigate disruptions. From delivering the mail to ensuring campus is updated, safe and beautiful, Facilities Management is there.

By the Numbers

100 GENERAL
university buildings

93 RESIDENTIAL
buildings

333 CLASSROOMS
on-campus

2,152 LABS
with equipment

8.6M SQUARE FEET
maintained

700 ACRES
of landscaping

40 MILES
of sidewalks

27.5k
WORK ORDERS
completed annually



Transforming Spaces

Village E

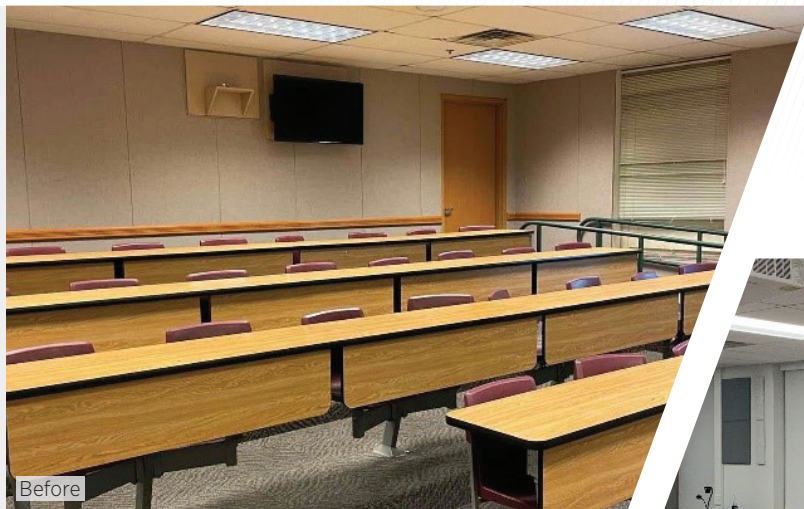


The facilities — from the classrooms and labs to the sweeping view up Library Lawn — all play a role in new student enrollment and creating the atmosphere that makes students want to stay. With buildings on campus constructed from 1892 to those under construction today, Facilities Management coordinates intricate plans that involve upkeep, renovation and updating.

Construction and Contract Services' in-house construction teams have breathed new life into dated building interiors, like the updates to the first floor of the Village, a residential life hall constructed in 2005.



Classroom Building



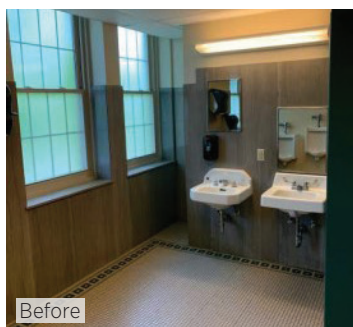
Before

Renovation of the first floor of the Classroom Building was completed in the summer of 2022 for \$1.3 million. New revitalization of the outdated finishes and furniture provides the “wow factor” for returning and incoming students. Updated finishes and equipment extend the life of the building and improves the atmosphere for students, faculty and staff.



After

Every space on campus matters. While some areas have held up well, replacing or repairing worn fixtures and ensuring ADA compliance in restrooms are necessary to create the environment needed for attracting and retaining students.



Before



Before



After



After

Second floor bathroom renovations in the Classroom Building.

McElroy Hall



McElroy Room 259



Vision for labs that will be completed summer 2023.

FAST FACTS

Operations and Maintenance is made up of unit teams to provide preventative, corrective, and small project services that keep the university running from plumbing and paint to electrical and carpentry.

Facilities Management supports the OSU branch campuses as well as the other Oklahoma A&M universities.

A key tenet of OSU's land-grant mission is research.

Construction and Contract Services is transforming two outdated classrooms in McElroy Hall to a state-of-the-art lab for the College of Veterinary Medicine.

OSU is one of the most beautiful campuses in the nation with its modified Georgian architecture and manicured grounds.

Maintaining each building is key. In FM's Operations and Maintenance, the structural trades staff power wash, seal and paint the exterior of the buildings to keep them protected and beautiful. Exterior building restorations in FY23 alone have included Physical Sciences, Central Dining, Willard Hall and Math Sciences.



Crews battle elements year-round to maintain and care for campus buildings.

FM, in conjunction with the university planner, Office of the Provost and the Institute for Teaching and Learning Excellence (ITLE), upgraded classrooms to enrich the student experience for increased retention. FY23 classrooms included four basement general university classrooms in the Nancy Randolph Davis Building. Ceiling tiles, lights, paint, flooring, boards and technology were updated in each one.





You only have

ONE OPPORTUNITY

////////////////////////////////////

to make a first impression.

First Impressions

Morrill Hall



FY23 was the inaugural First Impressions Program allowing departments to submit a “first impression” upgrade that they would like Facilities Management Operations and Maintenance to fund and complete.

Three areas of focus were selected from college deans’ submissions:

- Morrill hallways and stairs
- Physical Sciences first floor hallways
- The first floor of Edmon Low Library

These areas are often first seen by undergraduate students or by prospective students and parents taking campus tours.

MORRILL HALL

The stairs were updated with new treads to improve safety, as well as visual appeal.

PHYSICAL SCIENCES

The first floor hallways were painted to create a more inviting space and better visual impact. The area was redesigned to create a modern, cleaner look. Lighting was upgraded to 4000K LED for energy efficiency and a brighter space. Additionally, a bottle fill station was added to the floor.

EDMON LOW LIBRARY

The first floor of the library, which is on the campus tour, is receiving an updated paint scheme and replacement of wayfinding signage. The updates align the library color scheme with the rest of campus.

Physical Sciences



Edmon Low



Breathtaking Beauty

OSU's landscape is the most visible, immediate impression of campus for prospective students.

Campus tours are a vital asset to recruitment. Within 10-15 minutes, a prospective student often makes a decision on whether they would like to attend OSU, rating "exterior aesthetic appeal" as a top three category in decision making. Landscape Services directly supports this effort by leading the Midwest as one of the most beautiful and unique campuses.

FAST FACTS

OSU has earned the Arbor Day Foundation's Tree Campus Higher Education Award every year since 2011 for its commitment to campus forest management and including staff and students in conservation goals. OSU has more than 4,000 inventoried trees in its urban forest, which includes 131 different species. In September 2022, OSU was officially named a Level II Arboretum through the ArbNet organization.



Theta Pond Spillway



Before



After





Welcome Plaza



IMPERATIVE 1

Enroll a minimum of 5,000 new first-year students by the fall of 2026 at the Stillwater campus.

OBJECTIVE 3

Create a University “Front Door”

A university is more than a collection of classroom buildings. It welcomes prospective and current students, their families, alumni, faculty, staff and visitors to campus.

Facilities Management leaders join a campus tour from time to time and take in the university with the eyes of prospective students seeing it for the first time.

To help the university create “front door” appeal, Facilities Management has upgraded the Student Union Parking Garage and Welcome Plaza outside the Student Union. They included adding wayfinding signage, upgrading trash receptacles, painting bollards and lettering, adding crosswalks along Hester Street, improving the look of the entrance to the parking garage, painting light poles, and repairing concrete at the street and crosswalk of the ConocoPhillips OSU Alumni Center.

Landscape Services designs concepts for university entrances that have high visual impact. From the Welcome Plaza to other entrances across campus, you’ll know when you arrive at OSU.



ConocoPhillips Alumni Center



To welcome home one of the most famous Cowboys, Landscape Services delivered Garth Brooks' topiary hat to The McKnight Center for the Performing Arts in time for two performances in April.



The Ideal Graduate

The fourth imperative of the university strategy is to create graduates who have professional preparedness.

Facilities Management partners with university faculty to give real-world experience to students in multiple disciplines, effectively turning the entire campus into a living, learning lab.

OSU has several state-of-the-art utility production facilities on campus that are routinely used for student tours and real-world learning labs. Engineering students can take tours of the OSU Central Plant and see firsthand examples of the concepts they learn about in their classes: thermodynamics, fluid mechanics, pumps, fans, equipment controls, electrical infrastructure, and much more. The building was designed with students in mind: a 60-person classroom in the basement and the observation room on the first floor with its floor-to-ceiling windows lets guests watch the industrial chillers and boilers in operation.

Civil and environmental engineering students witness water flow and chemical treatment at Energy Services' Water Treatment Plant that serves domestic water to the entire campus. Fire Protection students use several Energy Services facilities and processes to perform process hazard analysis and provide reports on their findings.



Central Plant





Energy Services is essentially the university's utility company, handling infrastructure, upkeep, improvements and distribution of electricity and the campus' water supply, including running OSU's own water treatment plant and providing steam, chilled water, hot water, and potable water for campus facilities heating and cooling.

FAST FACTS

The Central Plant can provide 12,000 tons of cooling to campus and the West Chilled Water Plant can provide 16,000 tons of cooling, equivalent to serving 7,000 homes. The Central Plant can also provide 180,000 pounds per hour of steam heating, equivalent to heating approximately 5,000 homes. And the Water Treatment Plant can produce 10 million gallons per day of treated water to the Stillwater campus.

Students have been a driving force behind some of OSU's special distinctions and landmarks including the Bee Campus USA designation and becoming a Monarch Waystation. A pocket prairie in the shape of a butterfly was installed at the corner of McElroy and Western roads with the help of students from multiple disciplines, and funded by a student who won a grant for the project.

INSECT INSIGHT

OSU has achieved national recognition as a Bee Campus, an accredited arboretum and, because of its significant native plant corridors, was certified as a Monarch Waystation, through a program run by the nonprofit Monarch Watch.



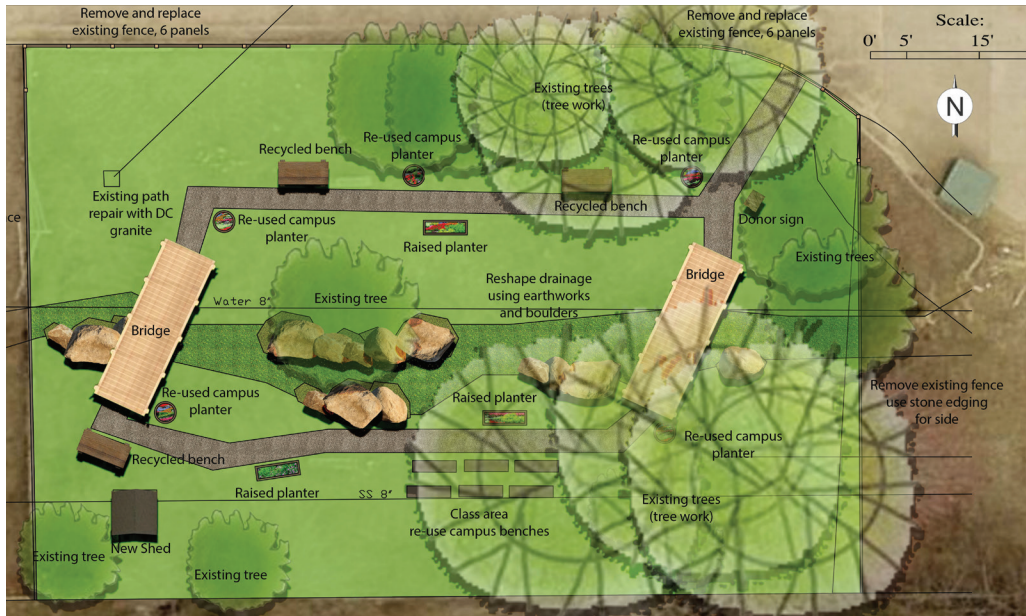
Students from microbiology and industrial engineering to psychology and landscape architecture help plant the butterfly pocket prairie.



Student Gabby Barber compares her original drawing with the insect hotel. In-House Construction and Landscape Services worked with Barber on the creation of an “insect hotel.” The hotel was constructed with wood sourced from an ice-damaged tree on the Stillwater campus. Barber, intern for the Office of Sustainability, designed the structure and landscaping intern Brendan Perkins did the final drawings for construction.

Through a low-budget (\$25,000), high impact project, Landscape Services and Construction and Contract Services turned an overgrown and unusable outdoor space into a unique teaching area by improving the overall appearance and usability of the College of Veterinary Medicine's Toxic Garden.

Landscape Services has a team of experts taking care of campus. Students can volunteer to help and learn, such as with the urban forest tree planting, led by university arborist Caitlin Gipson.





Sustainability Efforts

The need for sustainable energy is one of society's most pressing problems. Facilities Management is working to be part of the solution on the OSU campus.

75%
OF ENERGY

used by OSU is supplied by wind energy from the Cowboy Wind Farm near Blackwell, Oklahoma.



Cowboy Wind Farm

Energy Services

Updated lighting can make a difference in energy savings, both from the amount of energy required to operate the light to a reduction in the amount of heat put off by more energy efficient LED lights.

With input from the university architect, In-House Construction updated 558 lighting fixtures in the Fire Protection Publications Office and warehouse. The new lights produce less heat and noise as well as provide savings based on energy efficiency.



Replacing antiquated equipment, like chillers, can lead to significant cost and repair savings.

ENERGY LEADERSHIP AWARD AND MANAGEMENT PROGRAM

The Energy Management Program at OSU has set the bar and the example for other higher education institutions across the nation. Over the course of the program, more than \$50 million in energy costs have been avoided.

RENEWABLE NATURAL GAS FEASIBILITY STUDY

OSU's Energy Services division is proactive about energy savings, partnering with ONE Gas on a feasibility study. Organic waste, such as food waste and animal waste, off-gas methane during their natural decomposition. Studies show that raw, unburned, methane gas is a major contributor of greenhouse gasses. The feasibility study will determine if methane from OSU's current waste streams could be captured within an anaerobic digester and delivered back into a local pipeline in place of traditional, fossil-based methane, reducing greenhouse gas emissions and reducing the amount of fossil-based methane that would have been burned.

SUPERVISORY CONTROL AND DATA ACQUISITION (SCADA)

Energy Services uses cutting edge technology to control, monitor and track its utility equipment within the production plants on campus. Energy Services has designed and installed a Supervisory Control and Data Acquisition (SCADA) system across campus utility distribution systems. These interconnected smart meters allow staff to remotely read utility meters, see real-time energy use, troubleshoot utility service issues through data analytics and have immediate utility outage alarming and response.

Cowboy Culture

Without fanfare or recognition, FM employees are the first to campus for snow and ice removal on days when everything is closed or responding in the middle of the night to a power outage. When the campus population drops for summer as most people plan vacations, Facilities Management has its busiest season — getting more than 8 million square feet ready for the influx of students in August.

Facilities Management and its many departments and specialties are all part of the Cowboy Culture; providing excellent service, beautiful places and creating an atmosphere that promotes learning.

FM worked with the University Counseling Service faculty to remodel the student reboot room in the Student Union. The reboot room is a quiet space to relax, unwind and reset for all students.





CELEBRATION

OSU was founded on Christmas Day 1890. Each year since 2010, the holiday display has grown, involving many departments from Facilities Management working together for two weeks to put up over 500 feet of LED garland, 250 strands of LED mini lights and over 1,700 feet of LED ground lighting — as well as the beloved wreath on Edmon Low Library.



HOMECOMING

Every fall is the arrival of America's Greatest Homecoming, drawing in thousands to campus for Walkaround and other campus activities. Facilities Management is a key part in making sure facilities and the grounds are ready for the crowds.



COMMENCEMENT

It's the biggest day of the school year. When OSU celebrates its graduates, it's what the entire university has been working toward. Facilities Management is always behind the scenes, setting up for thousands of graduates and their families.

By the Numbers

UMS

1.2M **PIECES**
of mail

165k **PARCELS**
handled annually

11k **PARCELS**
shipped out

99.2% **ON-TIME**
delivery rate

FISCAL OPERATIONS

\$129M **OPERATIONS**
budget

\$100M **BILLABLE**
services

\$22M **PAYROLL**
processed

380+ **STAFF**
employed

PROCUREMENT SERVICES

12k **INBOUND**
packages >150 lbs

226 **OUTBOUND**
packages >150 lbs

\$267k **INVENTORY**
managed

2,500 **total**
SKUs

\$30M **INVOICES**
processed

\$1.2M **P-CARD**
transactions

\$1.3M **in stock**
SALES

Business Operations is a key to everything Facilities Management does. The department includes Facilities Management IT, Procurement Services, University Mailing Services (UMS), Business Operations/Analysis and Fiscal Operations.

FM IT

FM IT oversees inventory, function and security of
338 COMPUTERS

315 iDEVICES

40 SERVERS
supporting FM and OSU building controls, Geospatial and networking needs.

BUSINESS SYSTEMS

39k+ WORK ORDER
phases in 2022

65 EXTRACT, LOAD, TRANSFORM
(ELT) data integrations managed

GEOSPATIAL

42 VISUAL UTILITY LAYERS
within a GIS map to geo-locate exterior assets on the OSU Stillwater campus

750 BUILDING NAMES
on campus can be accessed by interactive map

Creating a campus of
distinction
through

EXCELLENCE
INNOVATION
and
LEADERSHIP

FACILITIES MANAGEMENT

LIVE

by the Code.

We end the day knowing we
gave it everything we had.

We dream as big as the sky.

We know challenges come
with pain, but pain will not win.

We have a passion to do what's
right, even when it's hard.

We stand for what matters,
even if we stand alone.

We finish what we start.

Being a Cowboy isn't in our
clothes, it's in our character.

